



International Office

Everest Biotech Ltd

Vector Laboratories, Inc.
6737 Mowry Ave
Newark, CA 94560
United States

Customer Service:

customerservice@vectorlabs.com

Technical Service:

technical@vectorlabs.com

Tel: +1 (800) 227-6666

www.everestbiotech.com

**Research Use Only. Not for
diagnostic or therapeutic use.**

EB07185 - Goat Anti-CKB / Brain Creatine Kinase Antibody

Size: 100µg specific antibody in 200µl



Target Protein

Principal Names: CKB, brain creatine kinase, creatine kinase, brain, B-CK, CKBB, creatine kinase B-chain, creatine kinase-B

Official Symbol: CKB

Accession Number(s): NP_001814.2

Human GeneID(s): [1152](#)

Non-Human GeneID(s): 12709 (mouse)

Immunogen

Peptide with sequence C-KPSDEHKTDLNPDN, from the internal region of the protein sequence according to NP_001814.2.

Please note the [peptide](#) is available for sale.

Purification and Storage

Purified from goat serum by ammonium sulphate precipitation followed by antigen affinity chromatography using the immunizing peptide.

Supplied at 0.5 mg/ml in Tris saline, 0.02% sodium azide, pH7.3 with 0.5% bovine serum albumin.

Aliquot and store at -20°C. Minimize freezing and thawing.

Applications Tested

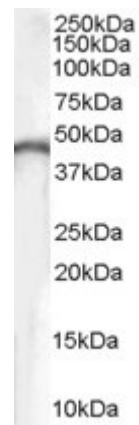
Peptide ELISA: antibody detection limit dilution 1:2000.

Western blot: Approx 45-48kDa band observed in human brain lysates (calculated MW of 42.6kDa according to NP_001814.2). Recommended concentration: 0.1-0.3µg/ml.

Species Reactivity

Tested: Human

Expected from sequence similarity: Human, Mouse, Rat, Dog, Pig, Cow



EB07185 (0.1 µg/ml) staining of human brain lysate (35 µg protein in RIPA buffer). Primary incubation was 1 hour.
Detected by chemiluminescence.