



UK Office

Everest Biotech Ltd

Cherwell Innovation Centre
77 Heyford Park
Upper Heyford
Oxfordshire
OX25 5HD
UK

Enquiries:

info@everestbiotech.com

Sales:

sales@everestbiotech.com

Tech support:

support@everestbiotech.com

Tel: +44 (0)1869 238326

Fax: +44 (0)1869 238327

US Office

Everest Biotech c/o Abcore

405 Maple Street, Suite A106
Ramona,
CA 92065
USA

Inquiries:

info@everestbiotech.com

Sales:

usasales@everestbiotech.com

Tech support:

support@everestbiotech.com

Tel: 888-320-4628 (toll-free)

Fax: 888-841-9041

www.everestbiotech.com

**Research Use Only. Not for
diagnostic or therapeutic use.**

EB08076 - Goat Anti-CLEC16A Antibody

Size: 100µg specific antibody in 200µl



Target Protein

Principal Names: CLEC16A, C-type lectin domain family 16, member A, Gop-1, KIAA0350, MGC111457

Official Symbol: CLEC16A

Accession Number(s): NP_056041.1; NP_001230332.1

Human GenelD(s): [23274](#)

Non-Human GenelD(s): 74374 (mouse)

Immunogen

Peptide with sequence C-SLENQDKGGERP, from the internal region of the protein sequence according to NP_056041.1; NP_001230332.1.

Please note the [peptide](#) is available for sale.

Purification and Storage

Purified from goat serum by ammonium sulphate precipitation followed by antigen affinity chromatography using the immunizing peptide.

Supplied at 0.5 mg/ml in Tris saline, 0.02% sodium azide, pH7.3 with 0.5% bovine serum albumin.

Aliquot and store at -20°C. Minimize freezing and thawing.

Applications Tested

Peptide ELISA: antibody detection limit dilution 1:16000.

Western blot: Preliminary experiments gave an approx 70kDa band in Rat Testis lysates after 0.5µg/ml antibody staining. This band was successfully blocked by incubation with the immunizing peptide. Primary incubation 1 hour at room temperature. Please note that we currently cannot find an explanation in the literature for this band, given the calculated size of 115kDa according to Rat XP_213209.4.

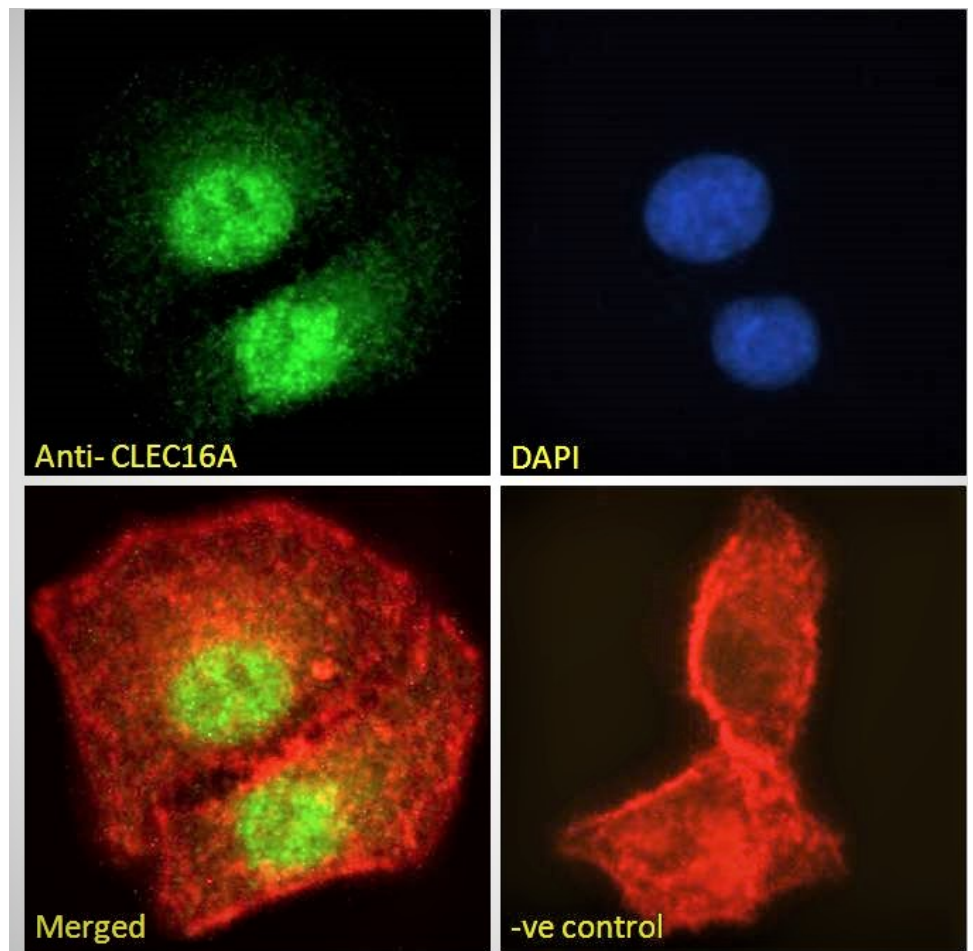
Immunofluorescence: Strong expression of the protein seen in the nuclei and weak expression seen in the cytoplasm of A549 cells. Recommended concentration: 10µg/ml.

Flow Cytometry: Flow cytometric analysis of A549 cells. Recommended concentration: 10ug/ml.

Species Reactivity

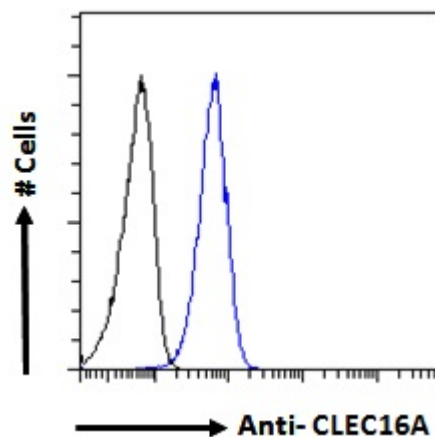
Tested: Human

Expected from sequence similarity: Human, Mouse, Rat



EB08076 Immunofluorescence analysis of paraformaldehyde fixed A549 cells, permeabilized with 0.15% Triton.

Primary incubation 1hr (10ug/ml) followed by Alexa Fluor 488 secondary antibody (2ug/ml), showing strong nuclear and weak cytoplasmic staining. Actin filaments were stained with phalloidin (red) and the nuclear stain is DAPI (blue). Negative control: Unimmunized goat IgG (10ug/ml) followed by Alexa Fluor 488 secondary antibody (2ug/ml).



EB08076 Flow cytometric analysis of paraformaldehyde fixed A549 cells (blue line), permeabilized with 0.5% Triton. Primary incubation 1hr (10ug/ml) followed by Alexa Fluor 488 secondary antibody (1ug/ml). IgG control:

Unimmunized goat IgG (black line) followed by Alexa Fluor 488 secondary antibody.