

UK Office

Everest Biotech Ltd

Cherwell Innovation Centre
77 Heyford Park
Upper Heyford
Oxfordshire
OX25 5HD
UK

Enquiries:

info@everestbiotech.com

Sales:

sales@everestbiotech.com

Tech support:

support@everestbiotech.com

Tel: +44 (0)1869 238326

www.everestbiotech.com

**Research Use Only. Not for
diagnostic or therapeutic use.**

EB08544 - Goat Anti-CLEC2 / CLEC1B Antibody

Size: 100µg specific antibody in 200µl



Target Protein

Principal Names: CLEC1B, CLEC2, C-type lectin domain family 1, member B, 1810061I13Rik, CLEC2B, PRO1384, QDED721, C-type lectin-like receptor-2

Official Symbol: CLEC1B

Accession Number(s): NP_001092901.1; NP_057593.3

Human GeneID(s): [51266](#)

Important Comments: This antibody is expected to recognize both reported isoforms (NP_001092901.1; NP_057593.3)

Immunogen

Peptide with sequence KGHKCSPCDTNWRY, from the internal region of the protein sequence according to NP_001092901.1; NP_057593.3.

Please note the [peptide](#) is available for sale.

Purification and Storage

Purified from goat serum by ammonium sulphate precipitation followed by antigen affinity chromatography using the immunizing peptide.

Supplied at 0.5 mg/ml in Tris saline, 0.02% sodium azide, pH7.3 with 0.5% bovine serum albumin.

Aliquot and store at -20°C. Minimize freezing and thawing.

Applications Tested

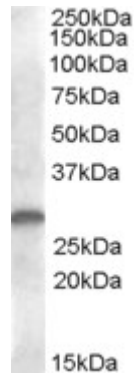
Peptide ELISA: antibody detection limit dilution 1:1000.

Western blot: Approx 28kDa band observed in human bone marrow and human kidney lysates (calculated MW of 26.6kDa according to NP_001092901.1). Recommended concentration: 1-3µg/ml.

Species Reactivity

Tested: Human

Expected from sequence similarity: Human



EB08544 (1 μ g/ml) staining of human kidney lysate (35 μ g protein in RIPA buffer). Primary incubation was 1 hour.
Detected by chemiluminescence.