



## International Office

### Everest Biotech Ltd

Vector Laboratories, Inc.  
6737 Mowry Ave  
Newark, CA 94560  
United States

Customer Service:

[customerservice@vectorlabs.com](mailto:customerservice@vectorlabs.com)

Technical Service:

[technical@vectorlabs.com](mailto:technical@vectorlabs.com)

Tel: +1 (800) 227-6666

[www.everestbiotech.com](http://www.everestbiotech.com)

**Research Use Only. Not for  
diagnostic or therapeutic use.**

## EB09343 - Goat Anti-CLEC4C / BDCA2 Antibody

Size: 100µg specific antibody in 200µl



### Target Protein

**Principal Names:** CLEC4C, C-type lectin domain family 4, member C, BDCA2, CD303, CLECSF11, CLECSF7, DLEC, HECL, MGC125789, MGC125791, MGC125792, MGC125793, PRO34150, C-type (calcium dependent, carbohydrate-recognition domain) lectin, superfamily member 11, C-type (calcium dependent, carbohydrate-recognition domain) lectin, superfamily member 7, C-type lectin domain family 4, member C, isoform 1, blood dendritic cell antigen 2 protein, dendritic cell lectin b

**Official Symbol:** CLEC4C

**Accession Number(s):** NP\_569708.1; NP\_987099.1

**Human GeneID(s):** [170482](#)

**Important Comments:** This antibody is expected to recognize isoform 1 and 2 (NP\_569708.1; NP\_987099.1).

### Immunogen

Peptide with sequence QSWTKSQKNCSV, from the Internal region of the protein sequence according to NP\_569708.1; NP\_987099.1.

Please note the [peptide](#) is available for sale.

### Purification and Storage

Purified from goat serum by ammonium sulphate precipitation followed by antigen affinity chromatography using the immunizing peptide.

Supplied at 0.5 mg/ml in Tris saline, 0.02% sodium azide, pH7.3 with 0.5% bovine serum albumin.

Aliquot and store at -20°C. Minimize freezing and thawing.

### Applications Tested

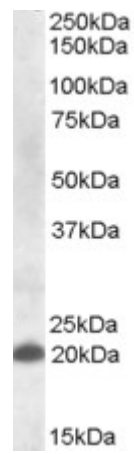
**Peptide ELISA:** antibody detection limit dilution 1:8000.

**Western blot:** Approx 20kDa band observed in Human Spleen lysates (calculated MW of 21.5kDa according to NP\_987099.1). Recommended concentration: 1-3µg/ml.

### Species Reactivity

**Tested:** Human

**Expected from sequence similarity:** Human



EB09343 (1 $\mu$ g/ml) staining of Human Spleen lysate (35 $\mu$ g protein in RIPA buffer). Primary incubation was 1 hour. Detected by chemiluminescence.