



UK Office

Everest Biotech Ltd

Cherwell Innovation Centre
77 Heyford Park
Upper Heyford
Oxfordshire
OX25 5HD
UK

Enquiries:

info@everestbiotech.com

Sales:

sales@everestbiotech.com

Tech support:

support@everestbiotech.com

Tel: +44 (0)1869 238326

www.everestbiotech.com

**Research Use Only. Not for
diagnostic or therapeutic use.**

EB06229 - Goat Anti-CLIM1 / PDLIM1 Antibody

Size: 100µg specific antibody in 200µl



Target Protein

Principal Names: PDLIM1, CLIM1, CLP36, ELFIN, CLP-36, hCLIM1, PDZ and LIM domain 1 (elfin), carboxy terminal LIM domain protein 1, PDZ and LIM domain 1, elfin, enigma

Official Symbol: PDLIM1

Accession Number(s): NP_066272.1

Human GeneID(s): [9124](#)

Immunogen

Peptide with sequence C-TPPEGYEVTVFPK, from the C Terminus of the protein sequence according to NP_066272.1.

Please note the [peptide](#) is available for sale.

Purification and Storage

Purified from goat serum by ammonium sulphate precipitation followed by antigen affinity chromatography using the immunizing peptide.

Supplied at 0.5 mg/ml in Tris saline, 0.02% sodium azide, pH7.3 with 0.5% bovine serum albumin.

Aliquot and store at -20°C. Minimize freezing and thawing.

Applications Tested

Peptide ELISA: antibody detection limit dilution 1:64000.

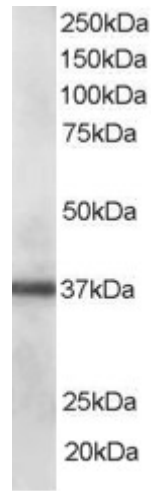
Western blot: Approx 37kDa band observed in Human Lung lysate (calculated MW of 36.1kDa according to NP_066272.1). Recommended concentration: 0.1-0.3µg/ml.

IHC: Paraffin embedded Human Placenta. Recommended concentration: 5µg/ml.

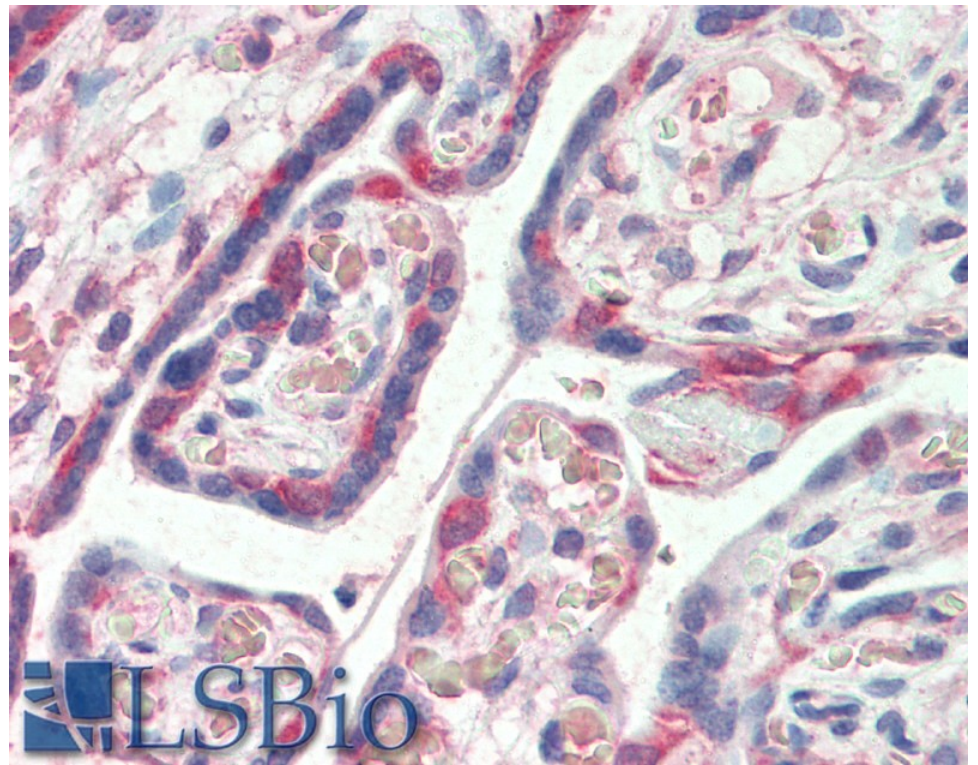
Species Reactivity

Tested: Human

Expected from sequence similarity: Human



EB06229 staining (0.1µg/ml) of Human Lung lysate (RIPA buffer, 35µg total protein per lane). Primary incubated for 1 hour. Detected by chemiluminescence.



EB06229 (5µg/ml) staining of paraffin embedded Human Placenta. Steamed antigen retrieval with citrate buffer pH 6, AP-staining.