



UK Office

Everest Biotech Ltd

Cherwell Innovation Centre
77 Heyford Park
Upper Heyford
Oxfordshire
OX25 5HD
UK

Enquiries:

info@everestbiotech.com

Sales:

sales@everestbiotech.com

Tech support:

support@everestbiotech.com

Tel: +44 (0)1869 238326

www.everestbiotech.com

**Research Use Only. Not for
diagnostic or therapeutic use.**

EB08922 - Goat Anti-CLMP Antibody

Size: 100µg specific antibody in 200µl



Target Protein

Principal Names: ASAM, ACAM, CLMP, FLJ22415, CAR-like membrane protein, adipocyte adhesion molecule

Official Symbol: CLMP

Accession Number(s): NP_079045.1

Human GeneID(s): [79827](#)

Immunogen

Peptide with sequence C-PSMIPSQSRAFQ, from the C Terminus of the protein sequence according to NP_079045.1.

Please note the [peptide](#) is available for sale.

Purification and Storage

Purified from goat serum by ammonium sulphate precipitation followed by antigen affinity chromatography using the immunizing peptide.

Supplied at 0.5 mg/ml in Tris saline, 0.02% sodium azide, pH7.3 with 0.5% bovine serum albumin.

Aliquot and store at -20°C. Minimize freezing and thawing.

Applications Tested

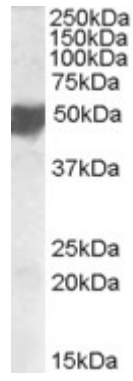
Peptide ELISA: antibody detection limit dilution 1:4000.

Western blot: Approx 50kDa band observed in Human Placenta lysates (calculated MW of 41.3kDa according to NP_079045.1). The observed molecular weight corresponds to earlier findings in literature with different antibodies (Raschperger et al, J Biol Chem. 2004 Jan 2;279(1):796-804.PMID: 14573622). Recommended concentration: 1-3µg/ml.

Species Reactivity

Tested: Human

Expected from sequence similarity: Human



EB08922 staining (0.5 μ g/ml) of Human Placenta lysate (RIPA buffer, 35 μ g total protein per lane). Primary incubated for 1 hour. Detected by western blot using chemiluminescence.