

UK Office

Everest Biotech Ltd

Cherwell Innovation Centre
77 Heyford Park
Upper Heyford
Oxfordshire
OX25 5HD
UK

Enquiries:

info@everestbiotech.com

Sales:

sales@everestbiotech.com

Tech support:

support@everestbiotech.com

Tel: +44 (0)1869 238326

www.everestbiotech.com

**Research Use Only. Not for
diagnostic or therapeutic use.**

EB11549 - Goat Anti-CLO29 (aa30-43) Antibody

Size: 100µg specific antibody in 200µl



Target Protein

Principal Names: C12orf29, chromosome 12 open reading frame 29, CLO29, DKFZp313K0436, DKFZp434N2030, DKFZp686L04169, FLJ38158, hypothetical protein LOC91298, MGC102978

Official Symbol: C12orf29

Accession Number(s): NP_001009894.2

Human GeneID(s): [91298](#)

Important Comments: This antibody is expected to recognize isoform 1 (Q8N999-1) and isoform 3 (Q8N999-3) as described in UniprotKB.

Immunogen

Peptide with sequence C-QPFKVLATETVSHK, from the internal region of the protein sequence according to NP_001009894.2.

Please note the [peptide](#) is available for sale.

Purification and Storage

Purified from goat serum by ammonium sulphate precipitation followed by antigen affinity chromatography using the immunizing peptide.

Supplied at 0.5 mg/ml in Tris saline, 0.02% sodium azide, pH7.3 with 0.5% bovine serum albumin.

Aliquot and store at -20°C. Minimize freezing and thawing.

Applications Tested

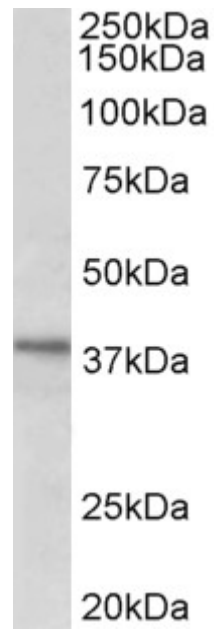
Peptide ELISA: antibody detection limit dilution 1:4000.

Western blot: Approx 38kDa band observed in lysates of cell line HeLa (calculated MW of 37.5kDa according to NP_001009894.2). Recommended concentration: 1-3µg/ml.

Species Reactivity

Tested: Human

Expected from sequence similarity: Human, Pig, Sheep, Cow



EB11549 (1 μ g/ml) staining of HeLa lysate (35 μ g protein in RIPA buffer). Primary incubation was 1 hour.
Detected by chemiluminescence.