



## International Office

### Everest Biotech Ltd

Vector Laboratories, Inc.  
6737 Mowry Ave  
Newark, CA 94560  
United States

Customer Service:

[customerservice@vectorlabs.com](mailto:customerservice@vectorlabs.com)

Technical Service:

[technical@vectorlabs.com](mailto:technical@vectorlabs.com)

Tel: +1 (800) 227-6666

[www.everestbiotech.com](http://www.everestbiotech.com)

**Research Use Only. Not for  
diagnostic or therapeutic use.**

## EB12170 - Goat Anti-CLOCK (aa458-472) Antibody

Size: 100µg specific antibody in 200µl



### Target Protein

**Principal Names:** CLOCK, clock homolog (mouse), KAT13D, bHLHe8, circadian locomotor output cycles kaput protein, circadian locomotor output cycles protein kaput, class E basic helix-loop-helix protein 8

**Official Symbol:** CLOCK

**Accession Number(s):** NP\_004889.1

**Human GeneID(s):** [9575](#)

**Non-Human GeneID(s):** 12753 (mouse)

**Important Comments:** Reported variants represent identical protein: NP\_004889.1, NP\_001254772.1

### Immunogen

Peptide with sequence C-DTSTPPRQHLPAAHEK, from the internal region of the protein sequence according to NP\_004889.1.

Please note the [peptide](#) is available for sale.

### Purification and Storage

Purified from goat serum by ammonium sulphate precipitation followed by antigen affinity chromatography using the immunizing peptide.

Supplied at 0.5 mg/ml in Tris saline, 0.02% sodium azide, pH7.3 with 0.5% bovine serum albumin.

Aliquot and store at -20°C. Minimize freezing and thawing.

### Applications Tested

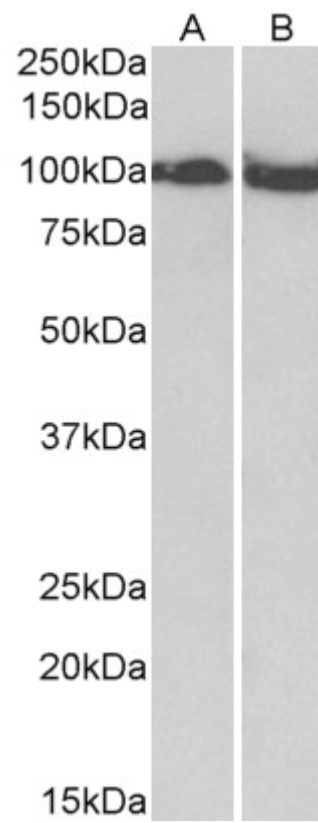
**Peptide ELISA:** antibody detection limit dilution 1:128000.

**Western blot:** Approx 100kDa band observed in Mouse and Rat Skeletal Muscle lysates (calculated MW of 96.4kDa according to Mouse NP\_031741.1 and 97.0kDa according to Rat NP\_068628.1). Recommended concentration: 0.03-0.1µg/ml.

### Species Reactivity

**Tested:** Mouse, Rat

**Expected from sequence similarity:** Human, Mouse, Cow



EB12170 (0.03µg/ml) staining of Mouse (A) and Rat (B) Skeletal Muscle lysate (35µg protein in RIPA buffer). Primary incubation was 1 hour. Detected by chemiluminescence.