



UK Office

Everest Biotech Ltd

Cherwell Innovation Centre
77 Heyford Park
Upper Heyford
Oxfordshire
OX25 5HD
UK

Enquiries:

info@everestbiotech.com

Sales:

sales@everestbiotech.com

Tech support:

support@everestbiotech.com

Tel: +44 (0)1869 238326

Fax: +44 (0)1869 238327

US Office

Everest Biotech c/o Abcore

405 Maple Street, Suite A106
Ramona,
CA 92065
USA

Inquiries:

info@everestbiotech.com

Sales:

usasales@everestbiotech.com

Tech support:

support@everestbiotech.com

Tel: 888-320-4628 (toll-free)

Fax: 888-841-9041

www.everestbiotech.com

**Research Use Only. Not for
diagnostic or therapeutic use.**

EB05873 - Goat Anti-CLPP Antibody

Size: 100µg specific antibody in 200µl



Target Protein

Principal Names: CLPP, ClpP caseinolytic protease, ATP-dependent, proteolytic subunit homolog (E. coli), ATP-dependent proteolytic subunit E.coli homolog, ATP-dependent protease ClpAP (E. coli), proteolytic subunit, human, ClpP (caseinolytic protease, ATP-dependent, proteolytic subunit, E. coli) homolog, ClpP caseinolytic peptidase, ATP-dependent, proteolytic subunit homolog (E. coli), ATP-dependent protease ClpAP, proteolytic subunit, human, ClpP caseinolytic protease, ATP-dependent, proteolytic subunit homolog, caseinolytic peptidase, ATP-dependent, proteolytic subunit

Official Symbol: CLPP

Accession Number(s): NP_006003.1

Human GeneID(s): [8192](#)

Immunogen

Peptide with sequence C-EAAPAAEPVPAST, from the C Terminus of the protein sequence according to NP_006003.1.

Please note the [peptide](#) is available for sale.

Purification and Storage

Purified from goat serum by ammonium sulphate precipitation followed by antigen affinity chromatography using the immunizing peptide.

Supplied at 0.5 mg/ml in Tris saline, 0.02% sodium azide, pH7.3 with 0.5% bovine serum albumin.

Aliquot and store at -20°C. Minimize freezing and thawing.

Applications Tested

Peptide ELISA: antibody detection limit dilution 1:1000.

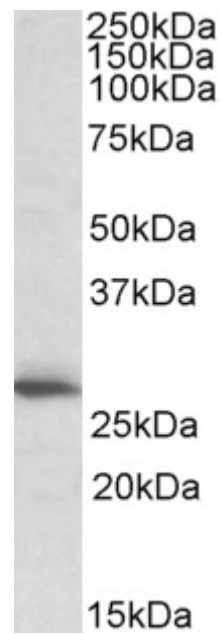
Western blot: Approx 26kDa band observed in Human Heart (calculated MW of 30.2kDa according to NP_006003.1). Recommended for use at 1-3µg/ml.

IHC: In paraffin embedded Human Liver shows cytoplasmic staining consistent with mitochondria in hepatocytes. Recommended concentration, 2-4µg/ml.

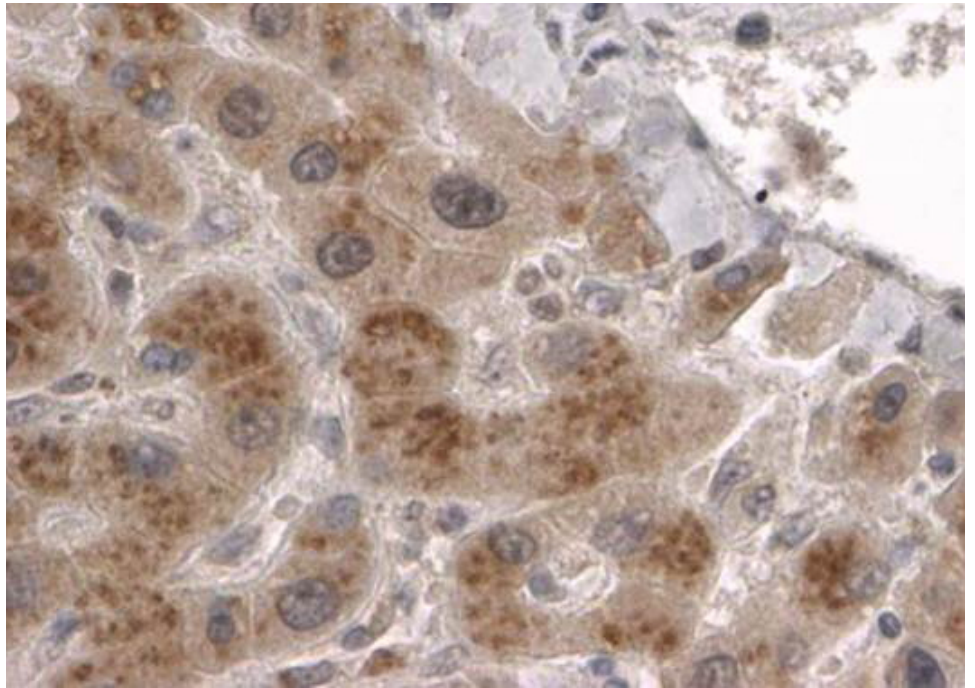
Species Reactivity

Tested: Human

Expected from sequence similarity: Human



EB05873 (1 μ g/ml) staining of Human Heart lysate (35 μ g protein in RIPA buffer). Primary incubation was 1 hour. Detected by chemiluminescence.



EB05873 (2 μ g/ml) staining of paraffin embedded Human Liver. Steamed antigen retrieval with citrate buffer pH 6, HRP-staining.