



UK Office

Everest Biotech Ltd

Cherwell Innovation Centre
77 Heyford Park
Upper Heyford
Oxfordshire
OX25 5HD
UK

Enquiries:

info@everestbiotech.com

Sales:

sales@everestbiotech.com

Tech support:

support@everestbiotech.com

Tel: +44 (0)1869 238326

Fax: +44 (0)1869 238327

US Office

Everest Biotech c/o Abcore

405 Maple Street, Suite A106
Ramona,
CA 92065
USA

Inquiries:

info@everestbiotech.com

Sales:

usasales@everestbiotech.com

Tech support:

support@everestbiotech.com

Tel: 888-320-4628 (toll-free)

Fax: 888-841-9041

www.everestbiotech.com

**Research Use Only. Not for
diagnostic or therapeutic use.**

EB11308 - Goat Anti-Clusterin / ApoJ (mouse, aa312-325) Antibody

Size: 100µg specific antibody in 200µl



Target Protein

Principal Names: A1893575, Apolipoprotein J, Cli, Clu, clusterin, complement lysis inhibitor, D14Ucla3, Sgp2, Sgp-2, SP-40, Sugp-2, testosterone repressed prostate message, ApoJ

Official Symbol: Clu

Accession Number(s): NP_038520.2

Non-Human GeneID(s): 12759 (mouse), 24854 (rat)

Immunogen

Peptide with sequence CSTNNPAQANLRQE, from the internal region of the protein sequence according to NP_038520.2.

Please note the [peptide](#) is available for sale.

Purification and Storage

Purified from goat serum by ammonium sulphate precipitation followed by antigen affinity chromatography using the immunizing peptide.

Supplied at 0.5 mg/ml in Tris saline, 0.02% sodium azide, pH7.3 with 0.5% bovine serum albumin.

Aliquot and store at -20°C. Minimize freezing and thawing.

Applications Tested

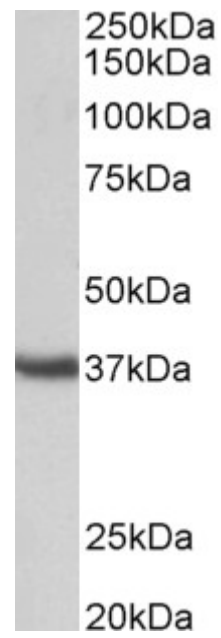
Peptide ELISA: antibody detection limit dilution 1:8000.

Western blot: Approx 37kDa band observed in Mouse Testis lysates (calculated MW of 51.7kDa according to NP_038520.2). The observed molecular weight corresponds to earlier findings in literature with different antibodies (Miyata et al, PMID: 11560857). Recommended concentration: 0.1-0.3µg/ml. Primary incubation was 1 hour. Preliminary testing was unsuccessful on Rat Brain for this particular batch.

Species Reactivity

Tested: Mouse

Expected from sequence similarity: Mouse



EB11308 (0.3 μ g/ml) staining of Mouse Testis lysate (35 μ g protein in RIPA buffer). Detected by chemiluminescence.