



## International Office

### Everest Biotech Ltd

Vector Laboratories, Inc.  
6737 Mowry Ave  
Newark, CA 94560  
United States

Customer Service:

[customerservice@vectorlabs.com](mailto:customerservice@vectorlabs.com)

Technical Service:

[technical@vectorlabs.com](mailto:technical@vectorlabs.com)

Tel: +1 (800) 227-6666

[www.everestbiotech.com](http://www.everestbiotech.com)

**Research Use Only. Not for  
diagnostic or therapeutic use.**

## EB08920 - Goat Anti-Clusterin / ApoJ (mouse) Antibody

Size: 100µg specific antibody in 200µl



### Target Protein

**Principal Names:** ApoJ, clusterin, Clu, AI893575, Cli, D14Ucla3, SP-40, Sgp-2, Sgp2, Sugg-2, Apolipoprotein J, complement lysis inhibitor, testosterone repressed prostate message

**Official Symbol:** Clu

**Accession Number(s):** NP\_038520.2

**Non-Human GeneID(s):** 12759 (mouse), 24854 (rat)

### Immunogen

Peptide with sequence C-EKALQEYRRKSRAE, from the C Terminus of the protein sequence according to NP\_038520.2.

Please note the [peptide](#) is available for sale.

### Purification and Storage

Purified from goat serum by ammonium sulphate precipitation followed by antigen affinity chromatography using the immunizing peptide.

Supplied at 0.5 mg/ml in Tris saline, 0.02% sodium azide, pH7.3 with 0.5% bovine serum albumin.

Aliquot and store at -20°C. Minimize freezing and thawing.

### Applications Tested

**Peptide ELISA:** antibody detection limit dilution 1:64000.

**Western blot:** Approx. 38kDa band observed in Mouse and Rat Brain lysates.(calculated MW of 51.7kDa according to Mouse NP\_038520.2 and 51.4kDa according to Rat XP\_006252156.1). This molecular weight is routinely observed by other sources and thought to correspond to the alpha chain of APOJ. Recommended concentration: 0.1-0.3µg/ml. Primary incubation 1 hour at room temperature.

**Immunofluorescence:** Strong expression of the protein seen in the membranes and cytoplasm of PC12 cells. Recommended concentration: 10µg/ml.

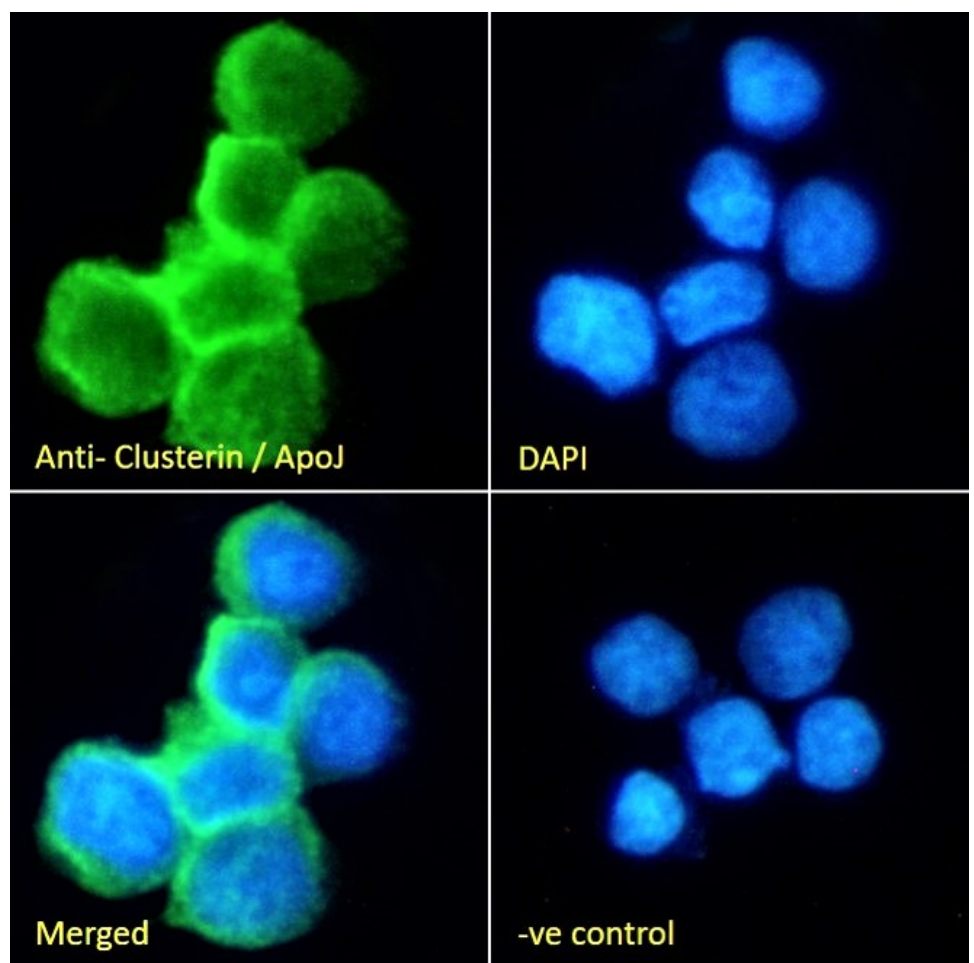
### Species Reactivity

**Tested:** Mouse, Rat

**Expected from sequence similarity:** Mouse, Rat



EB08920 (0.1µg/ml) staining of Mouse (A) and (0.3µg/ml) Rat (B) Brain lysate (35µg protein in RIPA buffer).  
Detected by chemiluminescence.



EB08920 Immunofluorescence analysis of paraformaldehyde fixed PC12 suspension cells, permeabilized with 0.15% Triton. Primary incubation 1hr (10ug/ml) followed by Alexa Fluor 488 secondary antibody (2ug/ml), showing membrane and cytoplasmic staining. The nuclear stain is DAPI (blue). Negative control: Unimmunized goat IgG (10ug/ml) followed by Alexa Fluor 488 secondary antibody (2ug/ml).