



UK Office

Everest Biotech Ltd

Cherwell Innovation Centre
77 Heyford Park
Upper Heyford
Oxfordshire
OX25 5HD
UK

Enquiries:

info@everestbiotech.com

Sales:

sales@everestbiotech.com

Tech support:

support@everestbiotech.com

Tel: +44 (0)1869 238326

Fax: +44 (0)1869 238327

US Office

Everest Biotech c/o Abcore

405 Maple Street, Suite A106
Ramona,
CA 92065
USA

Inquiries:

info@everestbiotech.com

Sales:

usasales@everestbiotech.com

Tech support:

support@everestbiotech.com

Tel: 888-320-4628 (toll-free)

Fax: 888-841-9041

www.everestbiotech.com

**Research Use Only. Not for
diagnostic or therapeutic use.**

EB08876 - Goat Anti-CMA1 Antibody

Size: 100µg specific antibody in 200µl



Target Protein

Principal Names: CMA1, chymase 1, mast cell, CYH, MCT1, MGC119890, MGC119891, chymase 1 preproprotein transcript E, chymase 1 preproprotein transcript I, chymase, heart, chymase, mast cell, mast cell protease I

Official Symbol: CMA1

Accession Number(s): NP_001827.1

Human GeneID(s): [1215](#)

Immunogen

Peptide with sequence C-QFRHPKYNTSTLHHD, from the internal region of the protein sequence according to NP_001827.1.

Please note the [peptide](#) is available for sale.

Purification and Storage

Purified from goat serum by ammonium sulphate precipitation followed by antigen affinity chromatography using the immunizing peptide.

Supplied at 0.5 mg/ml in Tris saline, 0.02% sodium azide, pH7.3 with 0.5% bovine serum albumin.

Aliquot and store at -20°C. Minimize freezing and thawing.

Applications Tested

Peptide ELISA: antibody detection limit dilution 1:128000.

Western blot: In transfected HEK293 transiently expressing full-length Human CMA1 (myc and DYKDDDDK tagged), a band of approx. 35kDa was observed. No bands were observed in mock-transfected HEK293 and the same band was observed using anti-DYKDDDDK tag antibody. Recommended concentration, 0.5-1µg/ml.

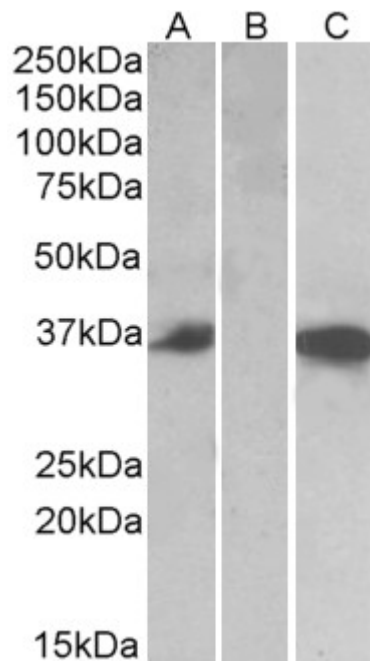
IHC: Paraffin embedded Human Testis and Tonsil (Mast cells). Recommended concentration: 1.5µg/ml.

Purchase the +ve control! The transfected lysate used to QC this product is available for sale. Please email sales@everestbiotech.com to request datasheet, pricing and delivery information.

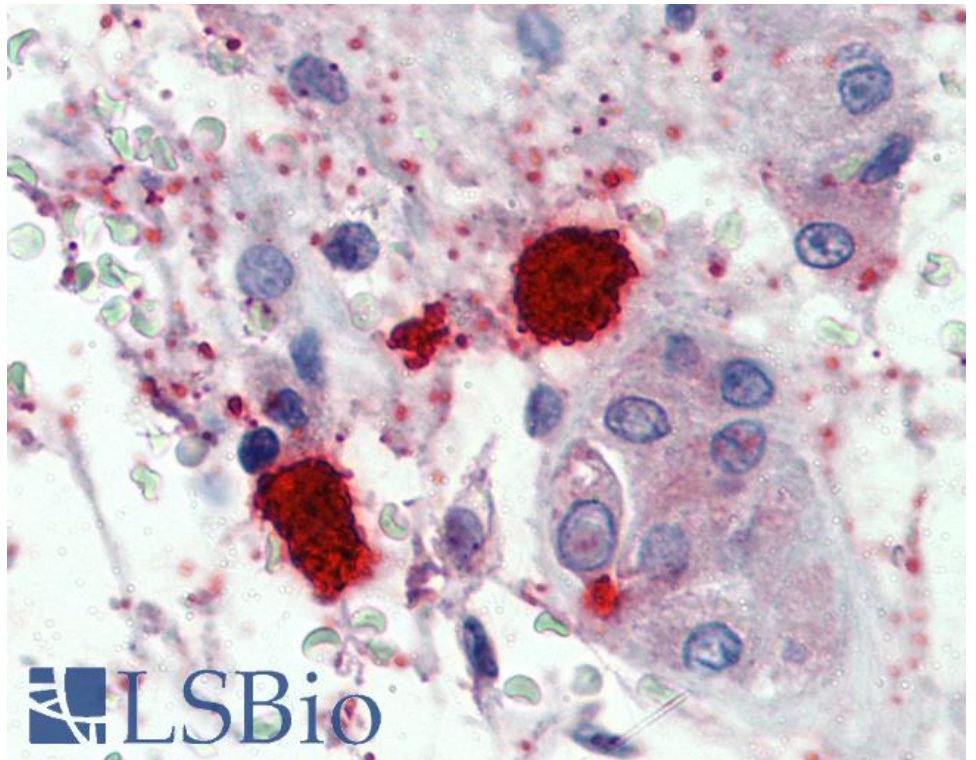
Species Reactivity

Tested: Human

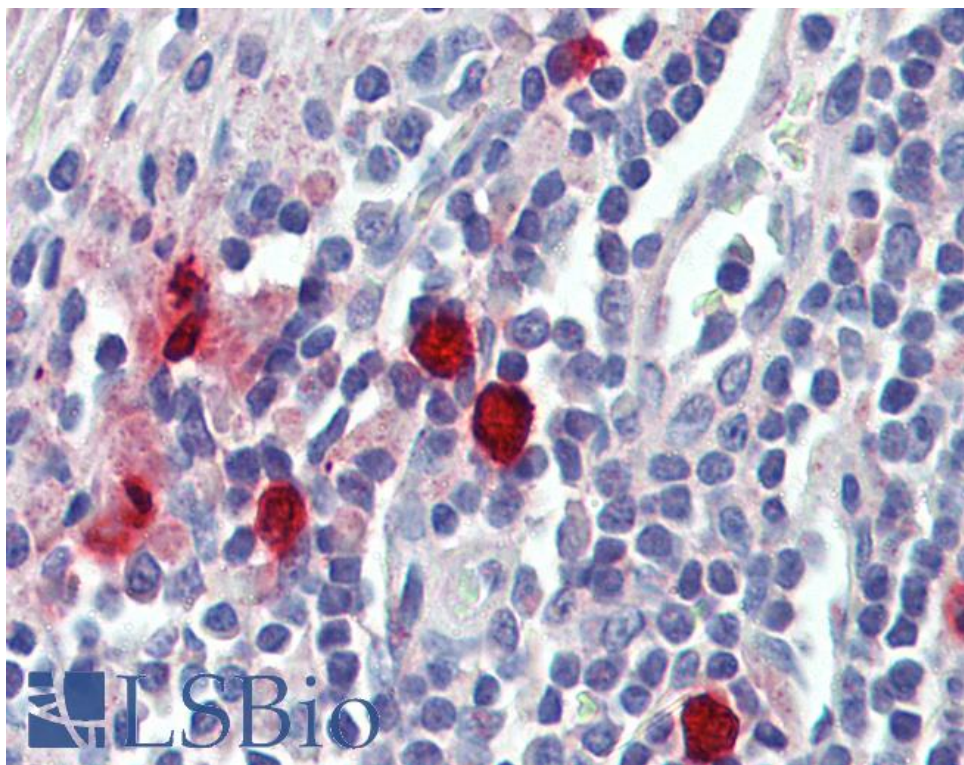
Expected from sequence similarity: Human



HEK293 lysate (10ug protein in RIPA buffer) over expressing Human CMA1 with DYKDDDDK tag probed with EB08876 (0.5ug/ml) in Lane A and probed with anti- DYKDDDDK Tag (1/3000) in lane C. Mock-transfected HEK293 probed with EB08876(1mg/ml) in Lane B. Primary incubations were for 1 hour. Detected by chemiluminescence.



EB08876 (1.5µg/ml) staining of paraffin embedded Human Testis (Mast cells). Steamed antigen retrieval with citrate buffer pH 6, AP-staining.



EB08876 (1.5µg/ml) staining of paraffin embedded Human Tonsil (Mast cells). Steamed antigen retrieval with citrate buffer pH 6, AP-staining.