



## UK Office

### Everest Biotech Ltd

Cherwell Innovation Centre  
77 Heyford Park  
Upper Heyford  
Oxfordshire  
OX25 5HD  
UK

Enquiries:

[info@everestbiotech.com](mailto:info@everestbiotech.com)

Sales:

[sales@everestbiotech.com](mailto:sales@everestbiotech.com)

Tech support:

[support@everestbiotech.com](mailto:support@everestbiotech.com)

Tel: +44 (0)1869 238326

[www.everestbiotech.com](http://www.everestbiotech.com)

**Research Use Only. Not for  
diagnostic or therapeutic use.**

## EB08550 - Goat Anti-CMG1 / CCDC2 / IFT74 Antibody

Size: 100µg specific antibody in 200µl



### Target Protein

**Principal Names:** CMG1, CMG-1, CMG 1, Coiled-coil domain containing 2, Coiled-coil domain-containing protein 2, Capillary morphogenesis gene 1, Capillary morphogenesis protein 1, IFT74, intraflagellar transport 74 homolog, ntraflagellar transport protein 74 homolog

**Official Symbol:** IFT74

**Accession Number(s):** NP\_001092692.1; NP\_001092693.1; NP\_079379.2; AAK77221.1

**Human GeneID(s):** [80173](#)

### Immunogen

Peptide with sequence CKTIVDALHSTSGN, from the C or N Terminus of the protein sequence according to NP\_001092692.1; NP\_001092693.1; NP\_079379.2; AAK77221.1.

Please note the [peptide](#) is available for sale.

### Purification and Storage

Purified from goat serum by ammonium sulphate precipitation followed by antigen affinity chromatography using the immunizing peptide.

Supplied at 0.5 mg/ml in Tris saline, 0.02% sodium azide, pH7.3 with 0.5% bovine serum albumin.

Aliquot and store at -20°C. Minimize freezing and thawing.

### Applications Tested

**Peptide ELISA:** antibody detection limit dilution 1:32000.

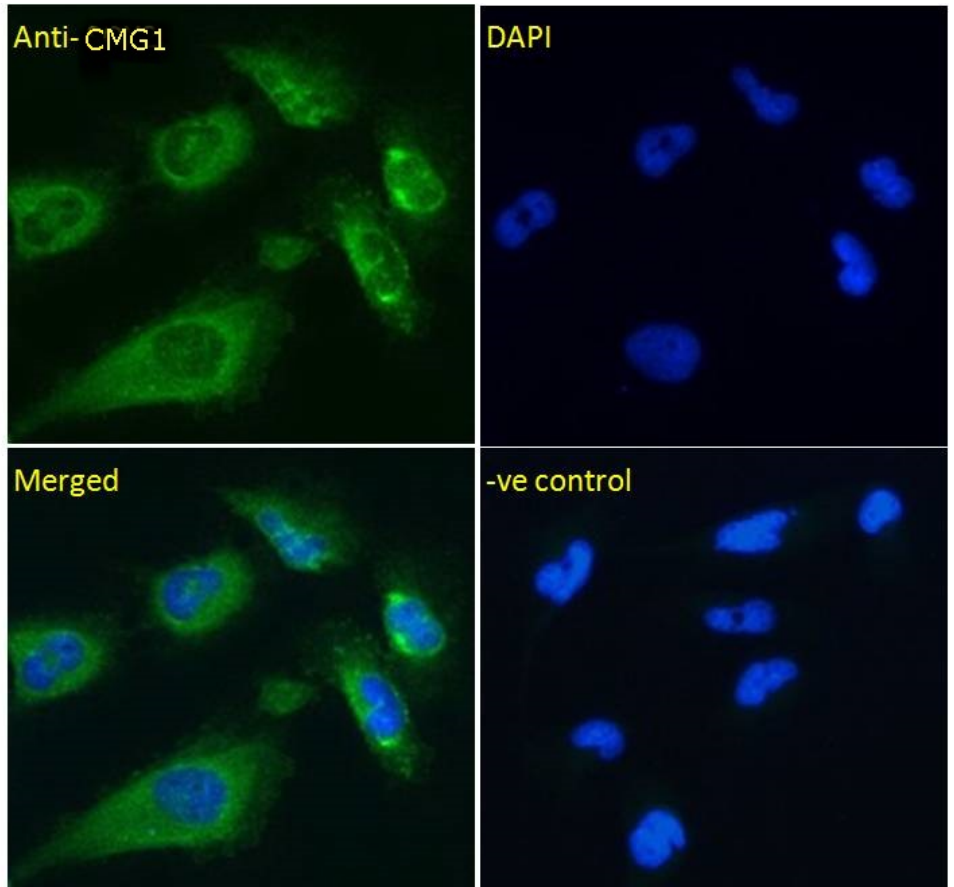
**Immunofluorescence:** Strong expression of the protein seen in the cytoplasm and Golgi apparatus of U251 cells. Recommended concentration: 10µg/ml.

**Flow Cytometry:** Flow cytometric analysis of U251 cells. Recommended concentration: 10ug/ml.

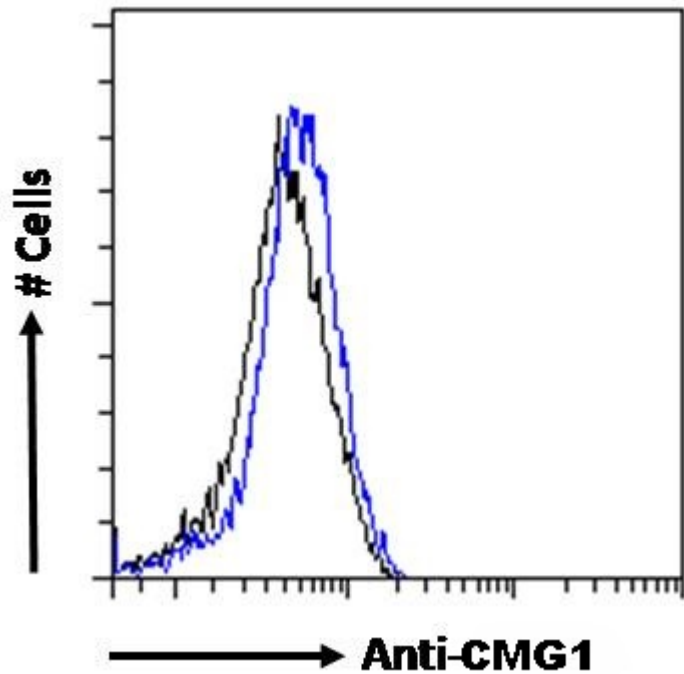
### Species Reactivity

**Tested:** Human

**Expected from sequence similarity:** Human



EB08550 Immunofluorescence analysis of paraformaldehyde fixed U251 cells, permeabilized with 0.15% Triton. Primary incubation 1hr (10ug/ml) followed by Alexa Fluor 488 secondary antibody (4ug/ml), showing cytoplasmic and Golgi apparatus staining. The nuclear stain is DAPI (blue). Negative control: Unimmunized goat IgG (10ug/ml) followed by Alexa Fluor 488 secondary antibody (4ug/ml).



EB08550 Flow cytometric analysis of paraformaldehyde fixed U251 cells (blue line), permeabilized with 0.5% Triton. Primary incubation 1hr (10ug/ml) followed by Alexa Fluor 488 secondary antibody (0.4ug/ml) showing weak staining. IgG control: Unimmunized goat IgG (black line) followed by Alexa Fluor 488 secondary antibody.