



## UK Office

### Everest Biotech Ltd

Cherwell Innovation Centre  
77 Heyford Park  
Upper Heyford  
Oxfordshire  
OX25 5HD  
UK

Enquiries:

[info@everestbiotech.com](mailto:info@everestbiotech.com)

Sales:

[sales@everestbiotech.com](mailto:sales@everestbiotech.com)

Tech support:

[support@everestbiotech.com](mailto:support@everestbiotech.com)

Tel: +44 (0)1869 238326

[www.everestbiotech.com](http://www.everestbiotech.com)

**Research Use Only. Not for  
diagnostic or therapeutic use.**

## EB06339-B - Goat Anti-CMG1 / CCDC2 / IFT74, Biotinylated Antibody

Size: 100µg specific antibody in 200µl



### Target Protein

**Principal Names:** IFT74, CCDC2, CMG-1, FLJ22621, MGC111562, intraflagellar transport 74 homolog (Chlamydomonas), capillary morphogenesis protein 1, coiled-coil domain containing 2, CMG1,

**Official Symbol:** IFT74

**Accession Number(s):** NP\_001092692.1; NP\_001092693.1; NP\_079379.2; AAK77221.1

**Human GeneID(s):** [80173](#)

**Non-Human GeneID(s):** 313365 (rat)

### Immunogen

Peptide with sequence C-KTIVDALHSTSGN., from the C Terminus of the protein sequence according to NP\_001092692.1; NP\_001092693.1; NP\_079379.2; AAK77221.1.

Please note the [peptide](#) is available for sale.

### Purification and Storage

Purified from goat serum by ammonium sulphate precipitation followed by antigen affinity chromatography using the immunizing peptide.

Supplied at 0.5 mg/ml in Tris saline, 0.02% sodium azide, pH7.3 with 0.5% bovine serum albumin.

Aliquot and store at -20°C. Minimize freezing and thawing.

### Applications Tested

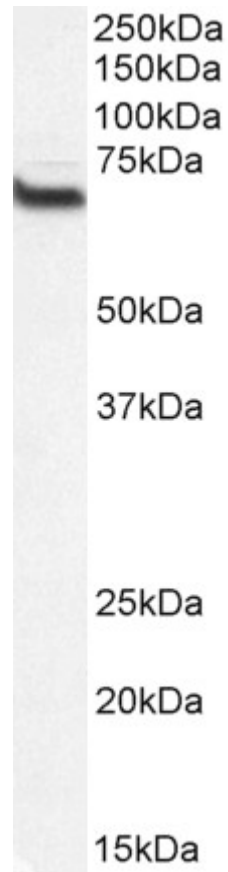
**Peptide ELISA:** antibody detection limit dilution 1:32000.

**Western blot:** Approx 70kDa band observed in lysates of cell line HEK293 (calculated MW of 69.2kDa according to AAK77221.1). The observed molecular weight corresponds to earlier findings in literature (Momeni et al, BMC Neurol. 2006 Dec 13;6:44.; PMID: 17166276). Recommended concentration: 0.2-0.6µg/ml.

### Species Reactivity

**Tested:** Human

**Expected from sequence similarity:** Human, Rat



Biotinylated EB06339 (0.2 $\mu$ g/ml) staining of HEK293 lysate (35 $\mu$ g protein in RIPA buffer). Primary incubation was 1 hour. Detected by chemiluminescence, using streptavidin-HRP and using NAP blocker as a substitute for skimmed milk.