



International Office

Everest Biotech Ltd

Vector Laboratories, Inc.
6737 Mowry Ave
Newark, CA 94560
United States

Customer Service:

customerservice@vectorlabs.com

Technical Service:

technical@vectorlabs.com

Tel: +1 (800) 227-6666

www.everestbiotech.com

**Research Use Only. Not for
diagnostic or therapeutic use.**

EB06889 - Goat Anti-Cofilin 2 (muscle) Antibody

Size: 100µg specific antibody in 200µl



Target Protein

Principal Names: cofilin 2 (muscle), HGNC:1875, CFL2, NEM7, cofilin 2

Official Symbol: CFL2

Accession Number(s): NP_068733.1; NP_619579.1

Human GeneID(s): [1073](#)

Important Comments: This antibody is expected to recognise both reported isoforms (NP_068733 and NP_619579)

Immunogen

Peptide with sequence C-DIKDRSTLGEK, from the C Terminus of the protein sequence according to NP_068733.1; NP_619579.1.

Please note the [peptide](#) is available for sale.

Purification and Storage

Purified from goat serum by ammonium sulphate precipitation followed by antigen affinity chromatography using the immunizing peptide.

Supplied at 0.5 mg/ml in Tris saline, 0.02% sodium azide, pH7.3 with 0.5% bovine serum albumin.

Aliquot and store at -20°C. Minimize freezing and thawing.

Applications Tested

Peptide ELISA: antibody detection limit dilution 1:128000.

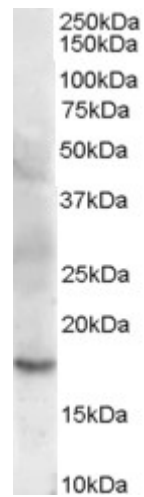
Western blot: Approx 18kDa band observed in Human Skeletal Muscle lysates and in Rat Heart lysates (calculated MW of 18.7kDa according to NP_068733.1 and NP_619579.1). Recommended concentration: 0.01-0.03µg/ml.

IHC: Paraffin embedded Human Heart. Recommended concentration: 3.75µg/ml.

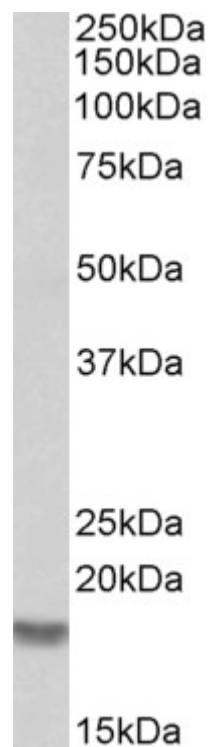
Species Reactivity

Tested: Human, Rat

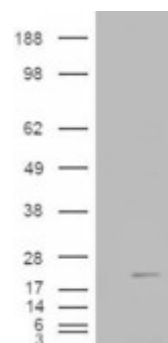
Expected from sequence similarity: Human, Mouse, Rat, Dog, Pig



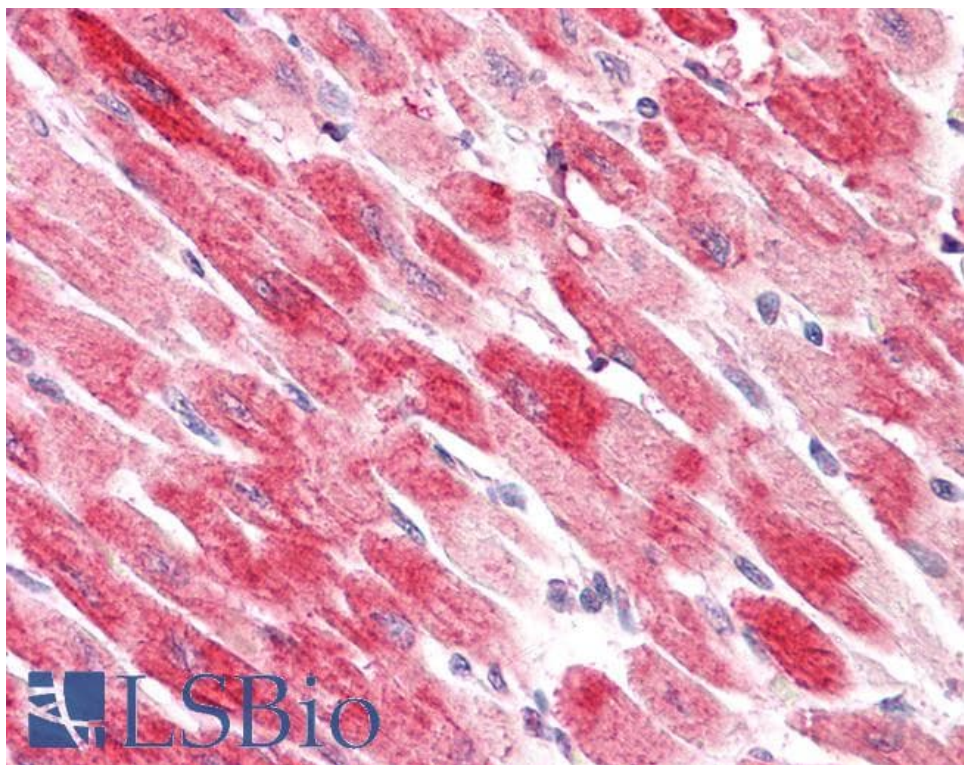
EB06889 (0.003 μ g/ml) staining of Human Skeletal Muscle lysate (35 μ g protein in RIPA buffer). Primary incubation was 1 hour. Detected by chemiluminescence.



EB06889 (0.001 μ g/ml) staining of Rat Skeletal Muscle lysate (35 μ g protein in RIPA buffer). Primary incubation was 1 hour. Detected by chemiluminescence.



HEK293 overexpressing Human Muscle Cofilin 2 (RC222215) and probed with EB06889 (mock transfection in first lane), tested by Origene.



EB06889 (3.75 μ g/ml) staining of paraffin embedded Human Heart. Steamed antigen retrieval with citrate buffer pH 6, AP-staining.