



## UK Office

### Everest Biotech Ltd

Cherwell Innovation Centre  
77 Heyford Park  
Upper Heyford  
Oxfordshire  
OX25 5HD  
UK

Enquiries:

[info@everestbiotech.com](mailto:info@everestbiotech.com)

Sales:

[sales@everestbiotech.com](mailto:sales@everestbiotech.com)

Tech support:

[support@everestbiotech.com](mailto:support@everestbiotech.com)

Tel: +44 (0)1869 238326

Fax: +44 (0)1869 238327

## US Office

### Everest Biotech c/o Abcore

405 Maple Street, Suite A106  
Ramona,  
CA 92065  
USA

Inquiries:

[info@everestbiotech.com](mailto:info@everestbiotech.com)

Sales:

[usasales@everestbiotech.com](mailto:usasales@everestbiotech.com)

Tech support:

[support@everestbiotech.com](mailto:support@everestbiotech.com)

Tel: 888-320-4628 (toll-free)

Fax: 888-841-9041

[www.everestbiotech.com](http://www.everestbiotech.com)

**Research Use Only. Not for  
diagnostic or therapeutic use.**

## EB06889 - Goat Anti-Cofilin 2 (muscle) Antibody

Size: 100µg specific antibody in 200µl



### Target Protein

**Principal Names:** cofilin 2 (muscle), HGNC:1875, CFL2, NEM7, cofilin 2

**Official Symbol:** CFL2

**Accession Number(s):** NP\_068733.1; NP\_619579.1

**Human GeneID(s):** [1073](#)

**Important Comments:** This antibody is expected to recognise both reported isoforms (NP\_068733 and NP\_619579)

### Immunogen

Peptide with sequence C-DIKDRSTLGEK, from the C Terminus of the protein sequence according to NP\_068733.1; NP\_619579.1.

Please note the [peptide](#) is available for sale.

### Purification and Storage

Purified from goat serum by ammonium sulphate precipitation followed by antigen affinity chromatography using the immunizing peptide.

Supplied at 0.5 mg/ml in Tris saline, 0.02% sodium azide, pH7.3 with 0.5% bovine serum albumin.

Aliquot and store at -20°C. Minimize freezing and thawing.

### Applications Tested

**Peptide ELISA:** antibody detection limit dilution 1:128000.

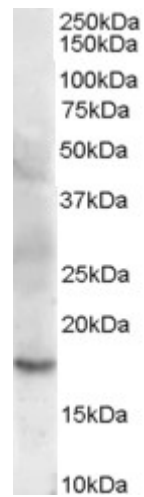
**Western blot:** Approx 18kDa band observed in Human Skeletal Muscle lysates and in Rat Heart lysates (calculated MW of 18.7kDa according to NP\_068733.1 and NP\_619579.1). Recommended concentration: 0.01-0.03µg/ml.

**IHC:** Paraffin embedded Human Heart. Recommended concentration: 3.75µg/ml.

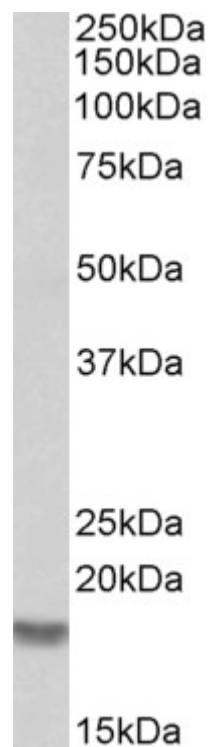
### Species Reactivity

**Tested:** Human, Rat

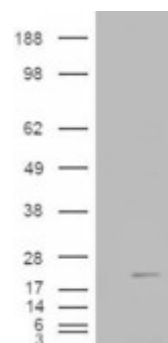
**Expected from sequence similarity:** Human, Mouse, Rat, Dog, Pig



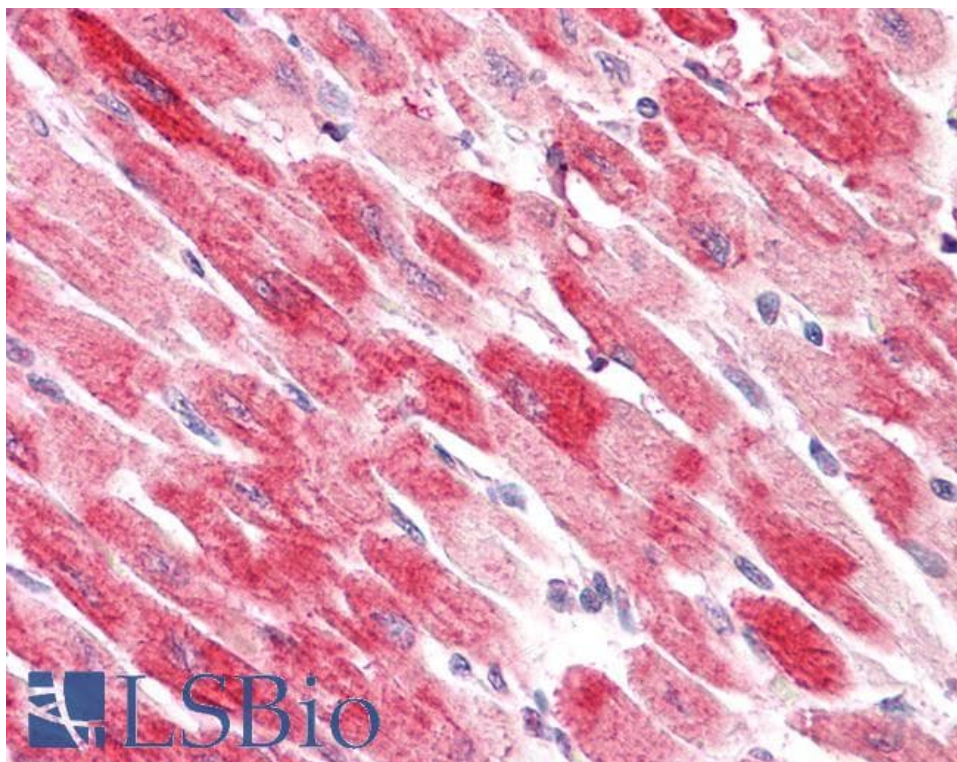
EB06889 (0.003 $\mu$ g/ml) staining of Human Skeletal Muscle lysate (35 $\mu$ g protein in RIPA buffer). Primary incubation was 1 hour. Detected by chemiluminescence.



EB06889 (0.001 $\mu$ g/ml) staining of Rat Skeletal Muscle lysate (35 $\mu$ g protein in RIPA buffer). Primary incubation was 1 hour. Detected by chemiluminescence.



HEK293 overexpressing Human Muscle Cofilin 2 (RC222215) and probed with EB06889 (mock transfection in first lane), tested by Origene.



EB06889 (3.75µg/ml) staining of paraffin embedded Human Heart. Steamed antigen retrieval with citrate buffer pH 6, AP-staining.