



UK Office

Everest Biotech Ltd

Cherwell Innovation Centre
77 Heyford Park
Upper Heyford
Oxfordshire
OX25 5HD
UK

Enquiries:

info@everestbiotech.com

Sales:

sales@everestbiotech.com

Tech support:

support@everestbiotech.com

Tel: +44 (0)1869 238326

www.everestbiotech.com

**Research Use Only. Not for
diagnostic or therapeutic use.**

EB10708 - Goat Anti-COL4A3 (aa341-353) Antibody

Size: 100µg specific antibody in 200µl



Target Protein

Principal Names: COL4A3, collagen, type IV, alpha 3 (Goodpasture antigen), collagen IV, alpha-3 polypeptide, collagen alpha-3(IV) chain, tumstatin

Official Symbol: COL4A3

Accession Number(s): NP_000082.2

Human GeneID(s): [1285](#)

Immunogen

Peptide with sequence C-RGPTEYYDTYQEK, from the internal region of the protein sequence according to NP_000082.2.

Please note the [peptide](#) is available for sale.

Purification and Storage

Purified from goat serum by ammonium sulphate precipitation followed by antigen affinity chromatography using the immunizing peptide.

Supplied at 0.5 mg/ml in Tris saline, 0.02% sodium azide, pH7.3 with 0.5% bovine serum albumin.

Aliquot and store at -20°C. Minimize freezing and thawing.

Applications Tested

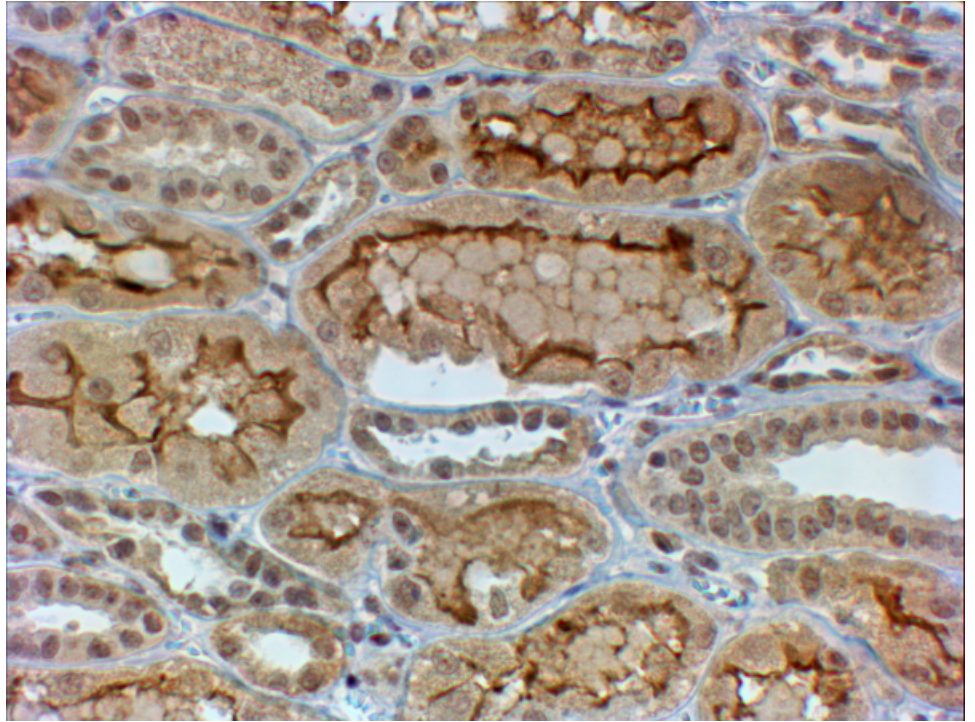
Peptide ELISA: antibody detection limit dilution 1:32000.

IHC: In paraffin embedded Human Kidney shows staining at the luminal side of the epithelial cell membranes. Recommended concentration, 4-6µg/ml.

Species Reactivity

Tested: Human

Expected from sequence similarity: Human, Dog, Cow



EB10708 (4µg/ml) staining of paraffin embedded Human Kidney. Steamed antigen retrieval with citrate buffer pH 6, HRP-staining.