



UK Office

Everest Biotech Ltd

Cherwell Innovation Centre
77 Heyford Park
Upper Heyford
Oxfordshire
OX25 5HD
UK

Enquiries:

info@everestbiotech.com

Sales:

sales@everestbiotech.com

Tech support:

support@everestbiotech.com

Tel: +44 (0)1869 238326

Fax: +44 (0)1869 238327

US Office

Everest Biotech c/o Abcore

405 Maple Street, Suite A106
Ramona,
CA 92065
USA

Inquiries:

info@everestbiotech.com

Sales:

usasales@everestbiotech.com

Tech support:

support@everestbiotech.com

Tel: 888-320-4628 (toll-free)

Fax: 888-841-9041

www.everestbiotech.com

**Research Use Only. Not for
diagnostic or therapeutic use.**

EB08911 - Goat Anti-COL4A3BP (aa396-411) Antibody

Size: 100µg specific antibody in 200µl



Target Protein

Principal Names: COL4A3BP, collagen, type IV, alpha 3 (Goodpasture antigen) binding protein, CERT, CERTL, FLJ20597, GPBP, STARD11, Goodpasture antigen-binding protein, START domain containing 11, StAR-related lipid transfer (START) domain containing 11, alpha 3 type IV collagen binding protein, ceramide transporter, lipid-transfer protein CERTL

Official Symbol: CERT1

Accession Number(s): NP_005704.1; NP_112729.1

Human GenelD(s): [10087](#)

Important Comments: This antibody is expected to recognize both reported isoforms (NP_005704.1; NP_112729.1).

Immunogen

Peptide with sequence C-KREDSWQKRLDKETEK, from the internal region of the protein sequence according to NP_005704.1; NP_112729.1.

Please note the [peptide](#) is available for sale.

Purification and Storage

Purified from goat serum by ammonium sulphate precipitation followed by antigen affinity chromatography using the immunizing peptide.

Supplied at 0.5 mg/ml in Tris saline, 0.02% sodium azide, pH7.3 with 0.5% bovine serum albumin.

Aliquot and store at -20°C. Minimize freezing and thawing.

Applications Tested

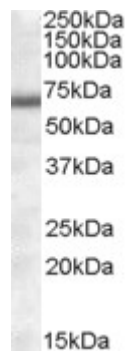
Peptide ELISA: antibody detection limit dilution 1:2000.

Western blot: Approx. 70kDa band observed in Human Heart lysates (calculated MW of 70.8kDa according to NP_005704.1). Recommended concentration: 1-3µg/ml.

Species Reactivity

Tested: Human

Expected from sequence similarity: Human, Dog, Cow



EB08911 (1µg/ml) staining of Human Heart lysate (35µg protein in RIPA buffer). Primary incubation was 1 hour.
Detected by chemiluminescence.