



UK Office

Everest Biotech Ltd

Cherwell Innovation Centre
77 Heyford Park
Upper Heyford
Oxfordshire
OX25 5HD
UK

Enquiries:

info@everestbiotech.com

Sales:

sales@everestbiotech.com

Tech support:

support@everestbiotech.com

Tel: +44 (0)1869 238326

Fax: +44 (0)1869 238327

US Office

Everest Biotech c/o Abcore

405 Maple Street, Suite A106
Ramona,
CA 92065
USA

Inquiries:

info@everestbiotech.com

Sales:

usasales@everestbiotech.com

Tech support:

support@everestbiotech.com

Tel: 888-320-4628 (toll-free)

Fax: 888-841-9041

www.everestbiotech.com

**Research Use Only. Not for
diagnostic or therapeutic use.**

EB09587 - Goat Anti-COL4A6 Antibody

Size: 100µg specific antibody in 200µl



Target Protein

Principal Names: COL4A6, collagen, type IV, alpha 6, MGC88184, OTTHUMP00000023834, OTTHUMP00000023835, collagen IV, alpha-6 polypeptide, collagen alpha 6 type IV, collagen of basement membrane, alpha-6, dJ889N15.4 (Collagen Alpha 6(IV)), type IV alpha 6 collagen

Official Symbol: COL4A6

Accession Number(s): NP_001838.2; NP_378667.1; NP_001274687.1; NP_001274688.1; NP_001274689.1

Human GeneID(s): [1288](#)

Important Comments: This antibody is expected to recognize reported isoforms NP_001838.2 (iso A),; NP_378667.1 (iso B),, NP_001274687.1 (iso 3),NP_001274688.1 (iso 4) and NP_001274689.1 (iso 5).

Immunogen

Peptide with sequence C-PSPEFETETLHNKES, from the internal region of the protein sequence according to NP_001838.2; NP_378667.1; NP_001274687.1; NP_001274688.1; NP_001274689.1.

Please note the [peptide](#) is available for sale.

Purification and Storage

Purified from goat serum by ammonium sulphate precipitation followed by antigen affinity chromatography using the immunizing peptide.

Supplied at 0.5 mg/ml in Tris saline, 0.02% sodium azide, pH7.3 with 0.5% bovine serum albumin.

Aliquot and store at -20°C. Minimize freezing and thawing.

Applications Tested

Peptide ELISA: antibody detection limit dilution 1:32000.

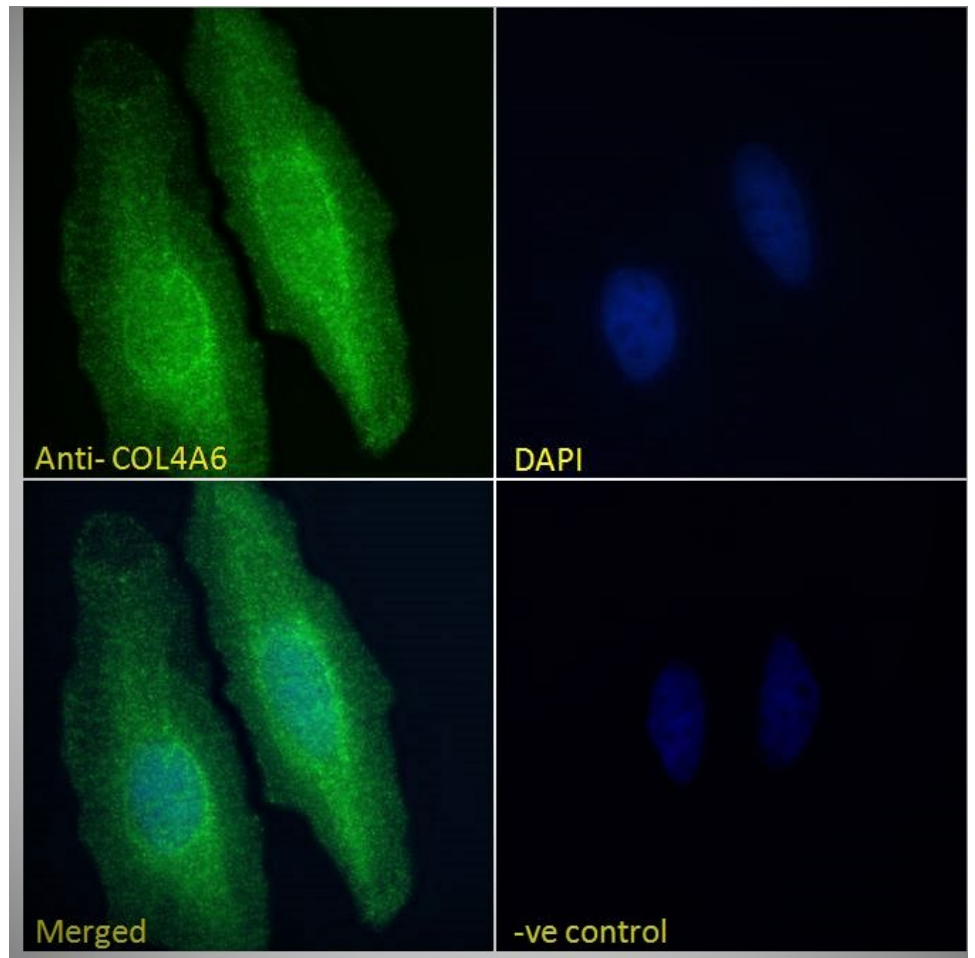
Immunofluorescence: Strong expression of the protein seen in the endoplasmic reticulum of HeLa and in the endoplasmic reticulum and membranes of U2OS cells. Recommended concentration: 10µg/ml.

Flow Cytometry: Flow cytometric analysis of HeLa cells. Recommended concentration: 10ug/ml.

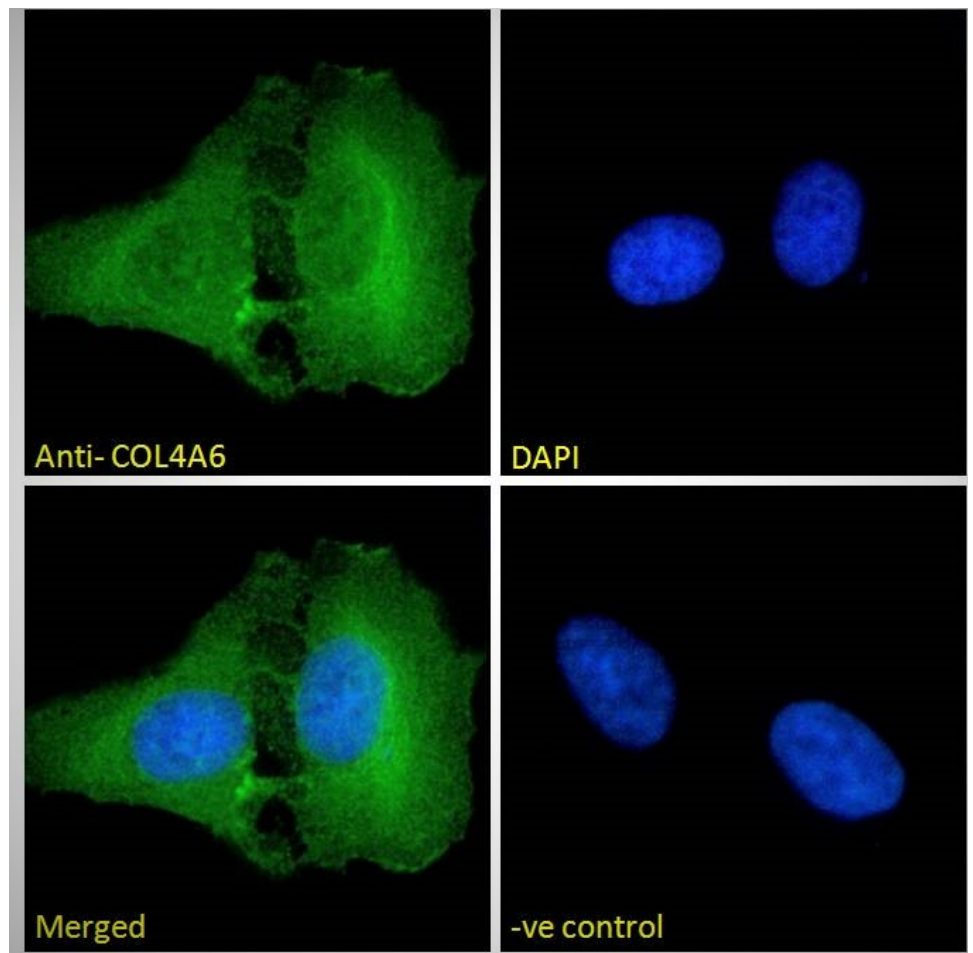
Species Reactivity

Tested: Human

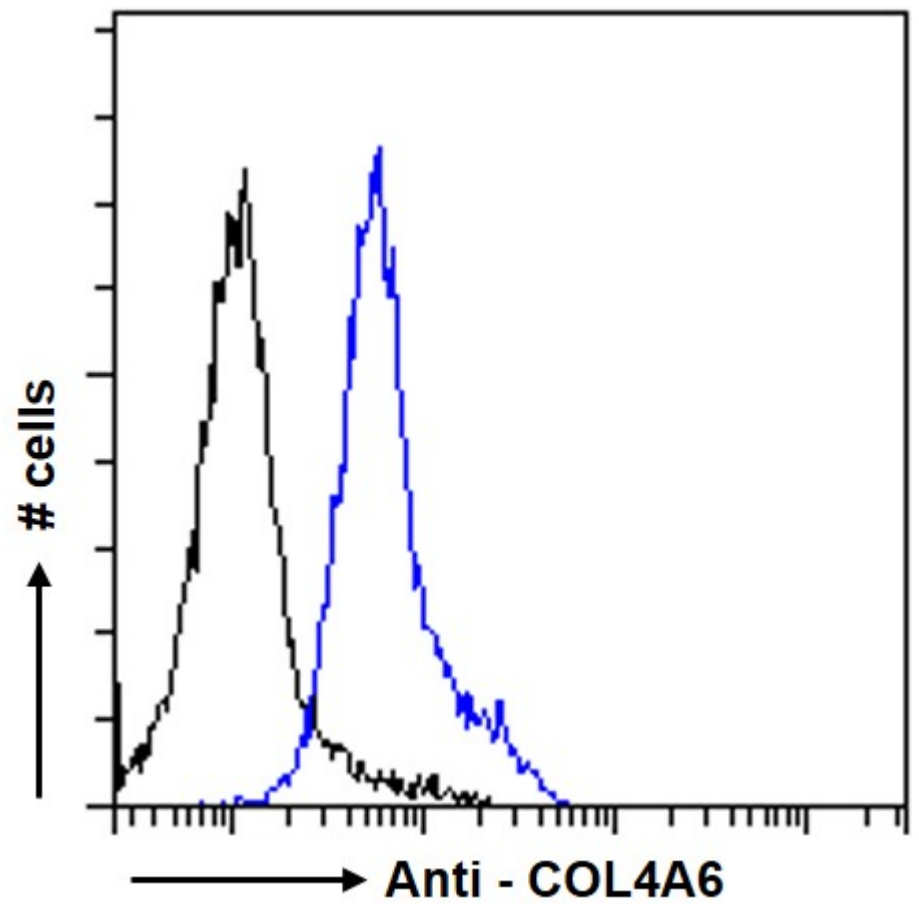
Expected from sequence similarity: Human



EB09587 Immunofluorescence analysis of paraformaldehyde fixed HeLa cells, permeabilized with 0.15% Triton. Primary incubation 1hr (10ug/ml) followed by Alexa Fluor 488 secondary antibody (2ug/ml), showing endoplasmic reticulum staining. The nuclear stain is DAPI (blue). Negative control: Unimmunized goat IgG (10ug/ml) followed by Alexa Fluor 488 secondary antibody (2ug/ml).



EB09587 Immunofluorescence analysis of paraformaldehyde fixed U2OS cells, permeabilized with 0.15% Triton. Primary incubation 1hr (10ug/ml) followed by Alexa Fluor 488 secondary antibody (2ug/ml), showing endoplasmic reticulum and membrane staining. The nuclear stain is DAPI (blue). Negative control: Unimmunized goat IgG (10ug/ml) followed by Alexa Fluor 488 secondary antibody (2ug/ml).



EB09587 Flow cytometric analysis of paraformaldehyde fixed HeLa cells (blue line), permeabilized with 0.5% Triton. Primary incubation 1hr (10ug/ml) followed by Alexa Fluor 488 secondary antibody (1ug/ml). IgG control: Unimmunized goat IgG (black line) followed by Alexa Fluor 488 secondary antibody.