



International Office

Everest Biotech Ltd

Vector Laboratories, Inc.
6737 Mowry Ave
Newark, CA 94560
United States

Customer Service:

customerservice@vectorlabs.com

Technical Service:

technical@vectorlabs.com

Tel: +1 (800) 227-6666

www.everestbiotech.com

**Research Use Only. Not for
diagnostic or therapeutic use.**

EB11703 - Goat Anti-complement C3 (aa1580-1592) Antibody

Size: 100µg specific antibody in 200µl



Target Protein

Principal Names: acylation-stimulating protein cleavage product, AHUS5, ARMD9, ASP, C3, C3 and PZP-like alpha-2-macroglobulin domain-containing protein 1, complement C3, complement component 3, complement component C3, CPAMD1, OTTHUMP00000197086

Official Symbol: C3

Accession Number(s): NP_000055.2

Human GeneID(s): [718](#)

Important Comments: This antibody is expected to recognize the C3 alpha chain, C3b alpha' chain and the C3c alpha' chain fragment 2.

Immunogen

Peptide with sequence QQRTFISPIKCRE, from the C Terminus of the protein sequence according to NP_000055.2.

Please note the [peptide](#) is available for sale.

Purification and Storage

Purified from goat serum by ammonium sulphate precipitation followed by antigen affinity chromatography using the immunizing peptide.

Supplied at 0.5 mg/ml in Tris saline, 0.02% sodium azide, pH7.3 with 0.5% bovine serum albumin.

Aliquot and store at -20°C. Minimize freezing and thawing.

Applications Tested

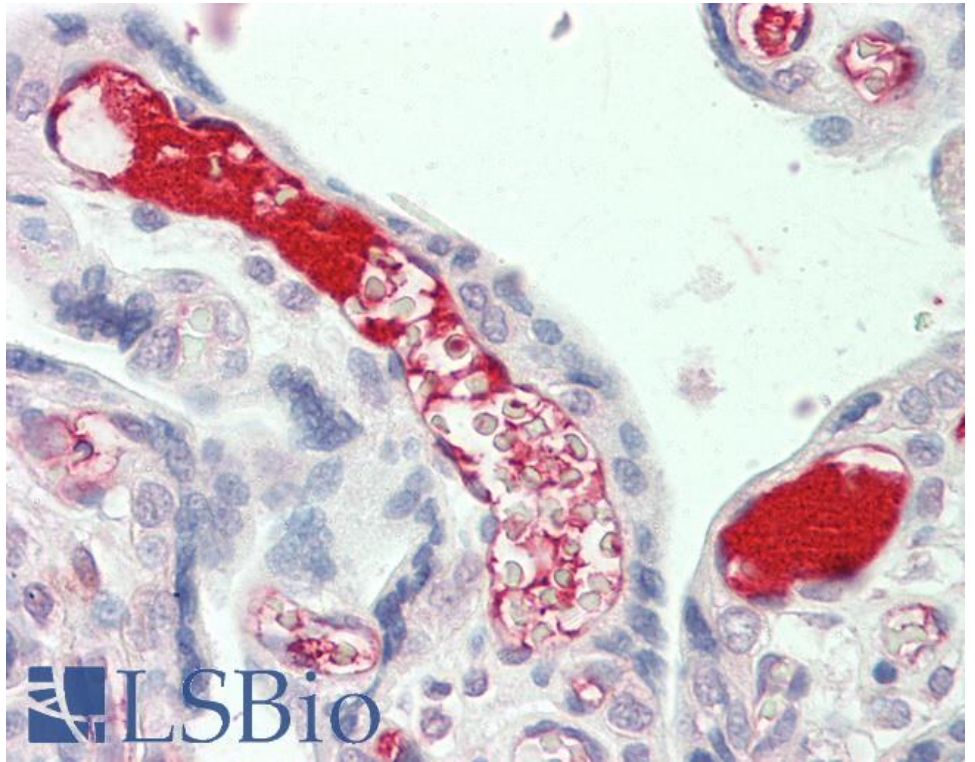
Peptide ELISA: antibody detection limit dilution 1:128000.

IHC: Paraffin embedded Human Placenta and Testis. Recommended concentration: 5µg/ml.

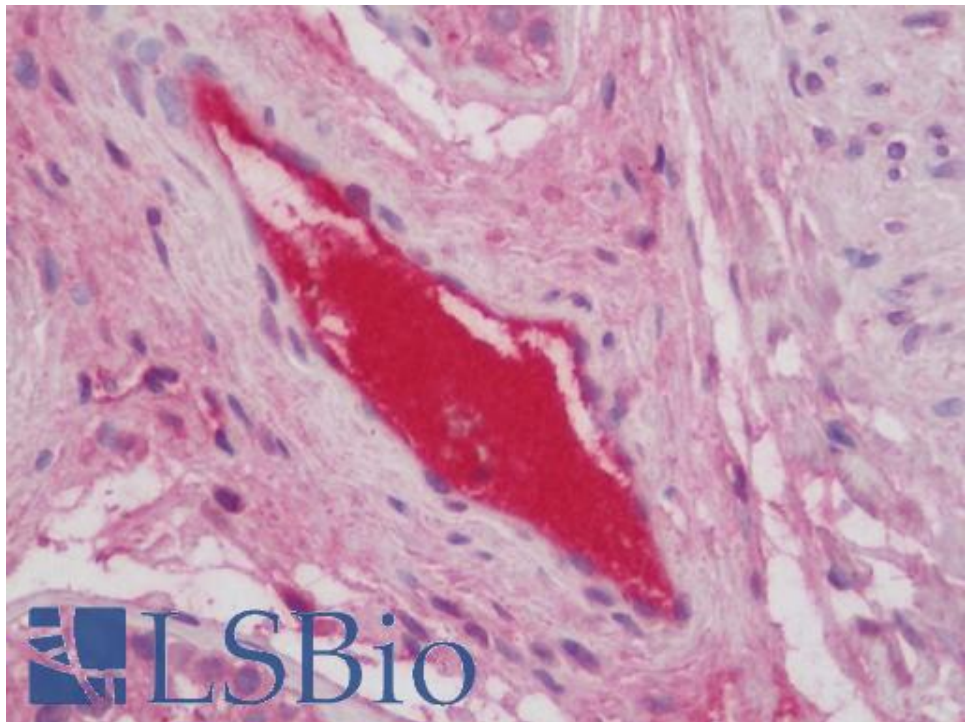
Species Reactivity

Tested: Human

Expected from sequence similarity: Human



EB11703 (5µg/ml) staining of paraffin embedded Human Placenta. Steamed antigen retrieval with citrate buffer Ph 6, AP-staining.



EB11703 (5µg/ml) staining of paraffin embedded Human Testis. Steamed antigen retrieval with citrate buffer pH 6, AP-staining.