



## UK Office

### Everest Biotech Ltd

Cherwell Innovation Centre  
77 Heyford Park  
Upper Heyford  
Oxfordshire  
OX25 5HD  
UK

Enquiries:

[info@everestbiotech.com](mailto:info@everestbiotech.com)

Sales:

[sales@everestbiotech.com](mailto:sales@everestbiotech.com)

Tech support:

[support@everestbiotech.com](mailto:support@everestbiotech.com)

Tel: +44 (0)1869 238326

[www.everestbiotech.com](http://www.everestbiotech.com)

**Research Use Only. Not for  
diagnostic or therapeutic use.**

## EB07357-B - Goat Anti-COMT (internal), Biotinylated Antibody

Size: 100µg specific antibody in 200µl



### Target Protein

**Principal Names:** COMT, catechol-O-methyltransferase, HEL-S-98n, catechol-O-methyltransferase isoform, epididymis secretory sperm binding protein Li 98n, testicular tissue protein Li 42

**Official Symbol:** COMT

**Accession Number(s):** NP\_000745.1; NP\_009294.1

**Human GeneID(s):** [1312](#)

**Important Comments:** This antibody is expected to recognize. Reported variants represent identical protein: XP\_011528193.1, XP\_011528191.1, XP\_011528192.1, XP\_011528189.1, XP\_011528190.1 Reported variants represent identical protein: NP\_000745.1, NP\_001128633.1, NP\_001128634.1

### Immunogen

Peptide with sequence CQDIIPQLKKKYDVD., from the internal region of the protein sequence according to NP\_000745.1; NP\_009294.1.

Please note the [peptide](#) is available for sale.

### Purification and Storage

Purified from goat serum by ammonium sulphate precipitation followed by antigen affinity chromatography using the immunizing peptide.

Supplied at 0.5 mg/ml in Tris saline, 0.02% sodium azide, pH7.3 with 0.5% bovine serum albumin.

Aliquot and store at -20°C. Minimize freezing and thawing.

### Applications Tested

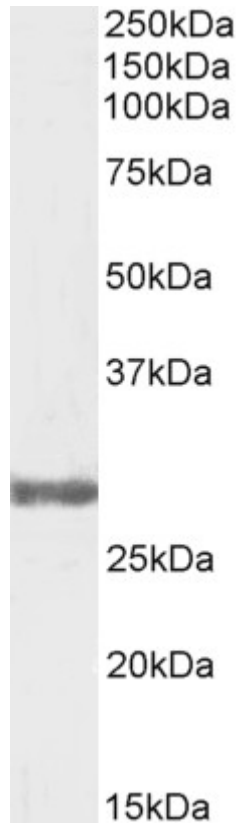
**Peptide ELISA:** antibody detection limit dilution 1:64000.

**Western blot:** Approx 28kDa band observed in Human Testis lysates. Recommended concentration: 0.3µg/ml. Primary incubation was 1 hour.

### Species Reactivity

**Tested:** Human

**Expected from sequence similarity:** Human



Biotinylated EB07357 (0.3 $\mu$ g/ml) staining of Testis lysate (35 $\mu$ g protein in RIPA buffer). Detected by chemiluminescence.