



UK Office

Everest Biotech Ltd

Cherwell Innovation Centre
77 Heyford Park
Upper Heyford
Oxfordshire
OX25 5HD
UK

Enquiries:

info@everestbiotech.com

Sales:

sales@everestbiotech.com

Tech support:

support@everestbiotech.com

Tel: +44 (0)1869 238326

Fax: +44 (0)1869 238327

US Office

Everest Biotech c/o Abcore

405 Maple Street, Suite A106
Ramona,
CA 92065
USA

Inquiries:

info@everestbiotech.com

Sales:

usasales@everestbiotech.com

Tech support:

support@everestbiotech.com

Tel: 888-320-4628 (toll-free)

Fax: 888-841-9041

www.everestbiotech.com

**Research Use Only. Not for
diagnostic or therapeutic use.**

EB07357-B - Goat Anti-COMT (internal), Biotinylated Antibody

Size: 100µg specific antibody in 200µl



Target Protein

Principal Names: COMT, catechol-O-methyltransferase, HEL-S-98n, catechol-O-methyltransferase isoform, epididymis secretory sperm binding protein Li 98n, testicular tissue protein Li 42

Official Symbol: COMT

Accession Number(s): NP_000745.1; NP_009294.1

Human GeneID(s): [1312](#)

Important Comments: This antibody is expected to recognize. Reported variants represent identical protein: XP_011528193.1, XP_011528191.1, XP_011528192.1, XP_011528189.1, XP_011528190.1 Reported variants represent identical protein: NP_000745.1, NP_001128633.1, NP_001128634.1

Immunogen

Peptide with sequence CQDIIPQLKKKYDVD., from the internal region of the protein sequence according to NP_000745.1; NP_009294.1.

Please note the [peptide](#) is available for sale.

Purification and Storage

Purified from goat serum by ammonium sulphate precipitation followed by antigen affinity chromatography using the immunizing peptide.

Supplied at 0.5 mg/ml in Tris saline, 0.02% sodium azide, pH7.3 with 0.5% bovine serum albumin.

Aliquot and store at -20°C. Minimize freezing and thawing.

Applications Tested

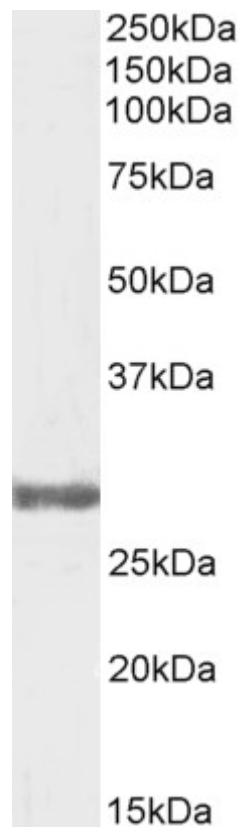
Peptide ELISA: antibody detection limit dilution 1:64000.

Western blot: Approx 28kDa band observed in Human Testis lysates. Recommended concentration: 0.3µg/ml. Primary incubation was 1 hour.

Species Reactivity

Tested: Human

Expected from sequence similarity: Human



Biotinylated EB07357 (0.3 μ g/ml) staining of Testis lysate (35 μ g protein in RIPA buffer). Detected by chemiluminescence.