



UK Office

Everest Biotech Ltd

Cherwell Innovation Centre
77 Heyford Park
Upper Heyford
Oxfordshire
OX25 5HD
UK

Enquiries:

info@everestbiotech.com

Sales:

sales@everestbiotech.com

Tech support:

support@everestbiotech.com

Tel: +44 (0)1869 238326

www.everestbiotech.com

**Research Use Only. Not for
diagnostic or therapeutic use.**

EB12274 - Goat Anti-contactin 1 (aa585-870) Antibody

Size: 100µg specific antibody in 200µl



Target Protein

Principal Names: CNTN1, contactin 1, F3, GP135, contactin-1, glycoprotein gP135, neural cell surface protein F3

Official Symbol: CNTN1

Accession Number(s): NP_001834.2; NP_778203.1

Human GeneID(s): [1272](#)

Non-Human GeneID(s): 12805 (mouse), 117258 (rat)

Important Comments: This antibody is expected to recognize isoform 1 (NP_001834.2) and isoform 2 (NP_778203.1).

Immunogen

Peptide with sequence C-QVTSQEYSARLEN, from the internal region of the protein sequence according to NP_001834.2; NP_778203.1.

Please note the [peptide](#) is available for sale.

Purification and Storage

Purified from goat serum by ammonium sulphate precipitation followed by antigen affinity chromatography using the immunizing peptide.

Supplied at 0.5 mg/ml in Tris saline, 0.02% sodium azide, pH7.3 with 0.5% bovine serum albumin.

Aliquot and store at -20°C. Minimize freezing and thawing.

Applications Tested

Peptide ELISA: antibody detection limit dilution 1:16000.

Western blot: Approx 140kDa band observed in Mouse Brain, and approx 150kDa observed in Human and Rat Brain lysates (calculated MW of 113kDa according to according to Human, NP_001834.2, Mouse NP_031753.1 and Rat NP_476459.1). The observed molecular weight corresponds to the glycosylated form. Recommended concentration: 0.3-1µg/ml.

IHC: Paraffin embedded Human Brain (Cerebellum) and Mouse Brain (Cerebral Cortex). Recommended concentration: 5µg/ml.

Species Reactivity

Tested: Human, Mouse, Rat

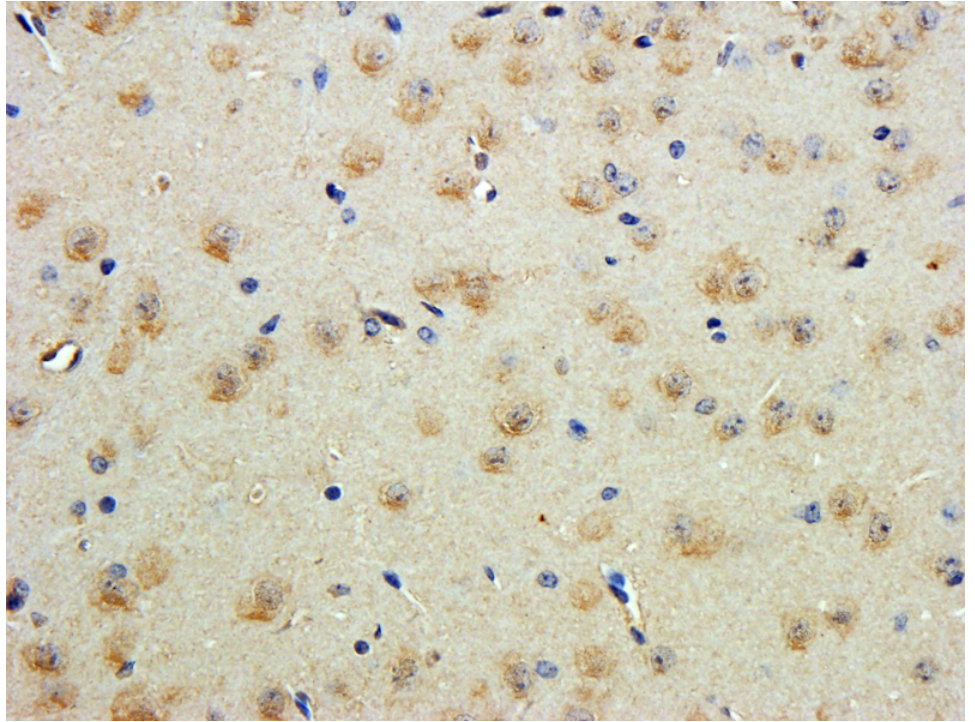
Expected from sequence similarity: Human, Mouse, Rat, Dog, Pig



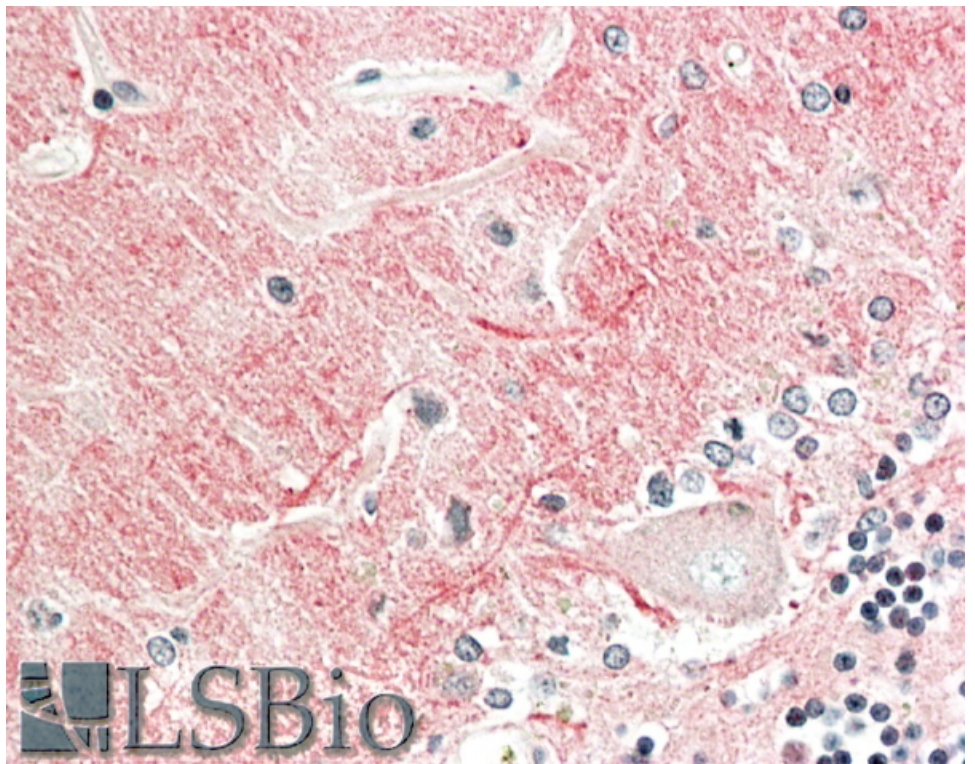
EB12274 (1 μ g/ml) staining of Human Cerebellum lysate (35 μ g protein in RIPA buffer). Primary incubation was 1 hour. Detected by chemiluminescence.



EB12274 (1 μ g/ml) staining of Mouse (A) and Rat (B) Brain lysate (35 μ g protein in RIPA buffer). Primary incubation was 1 hour. Detected by chemiluminescence.



EB12274 (5ug/ml) staining of paraffin embedded Mouse Cerebral Cortex. Steamed antigen retrieval with citrate buffer pH 6, DAB-staining.



EB12274 (5ug/ml) staining of paraffin embedded Human Cerebellum. Steamed antigen retrieval with citrate buffer pH 6, AP-staining.