

## UK Office

### Everest Biotech Ltd

Cherwell Innovation Centre  
77 Heyford Park  
Upper Heyford  
Oxfordshire  
OX25 5HD  
UK

Enquiries:

[info@everestbiotech.com](mailto:info@everestbiotech.com)

Sales:

[sales@everestbiotech.com](mailto:sales@everestbiotech.com)

Tech support:

[support@everestbiotech.com](mailto:support@everestbiotech.com)

Tel: +44 (0)1869 238326

[www.everestbiotech.com](http://www.everestbiotech.com)

**Research Use Only. Not for  
diagnostic or therapeutic use.**

## EB12273 - Goat Anti-contactin 1 Antibody

Size: 100µg specific antibody in 200µl



### Target Protein

**Principal Names:** CNTN1, contactin 1, F3, GP135, contactin-1, glycoprotein gP135, neural cell surface protein F3

**Official Symbol:** CNTN1

**Accession Number(s):** NP\_001834.2; NP\_778203.1; NP\_001242992.1

**Human GeneID(s):** [1272](#)

**Non-Human GeneID(s):** 12805 (mouse), 117258 (rat)

**Important Comments:** This antibody is expected to recognize all reported isoforms (NP\_001834.2; NP\_778203.1; NP\_001242992.1). Reported variants represent identical protein: NP\_001242993.1, NP\_001242992.1.

### Immunogen

Peptide with sequence C-ENIRGKDKHQAR, from the internal region of the protein sequence according to NP\_001834.2; NP\_778203.1; NP\_001242992.1.

Please note the [peptide](#) is available for sale.

### Purification and Storage

Purified from goat serum by ammonium sulphate precipitation followed by antigen affinity chromatography using the immunizing peptide.

Supplied at 0.5 mg/ml in Tris saline, 0.02% sodium azide, pH7.3 with 0.5% bovine serum albumin.

Aliquot and store at -20°C. Minimize freezing and thawing.

### Applications Tested

**Peptide ELISA:** antibody detection limit dilution 1:32000.

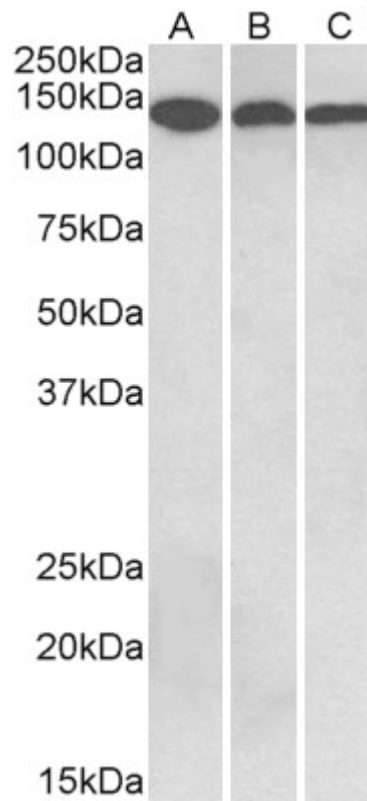
**Western blot:** Approx 140kDa band observed in Human, Mouse, Rat and Pig Brain lysates (calculated MW of 113kDa according to NP\_001834.2). The observed molecular weight corresponds to the glycosylated form. Recommended concentration: 0.3-1µg/ml. Primary incubation was 1 hour.

**IHC:** Paraffin embedded Human Brain (Cerebellum). Recommended concentration: 5µg/ml.

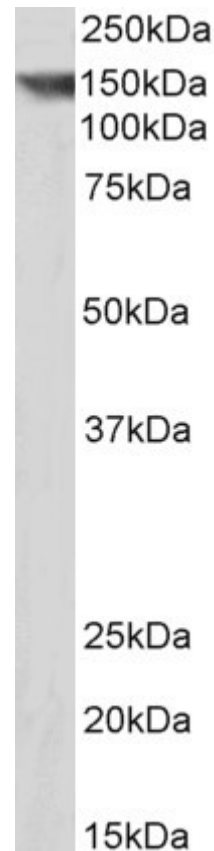
### Species Reactivity

**Tested:** Human, Mouse, Rat, Pig

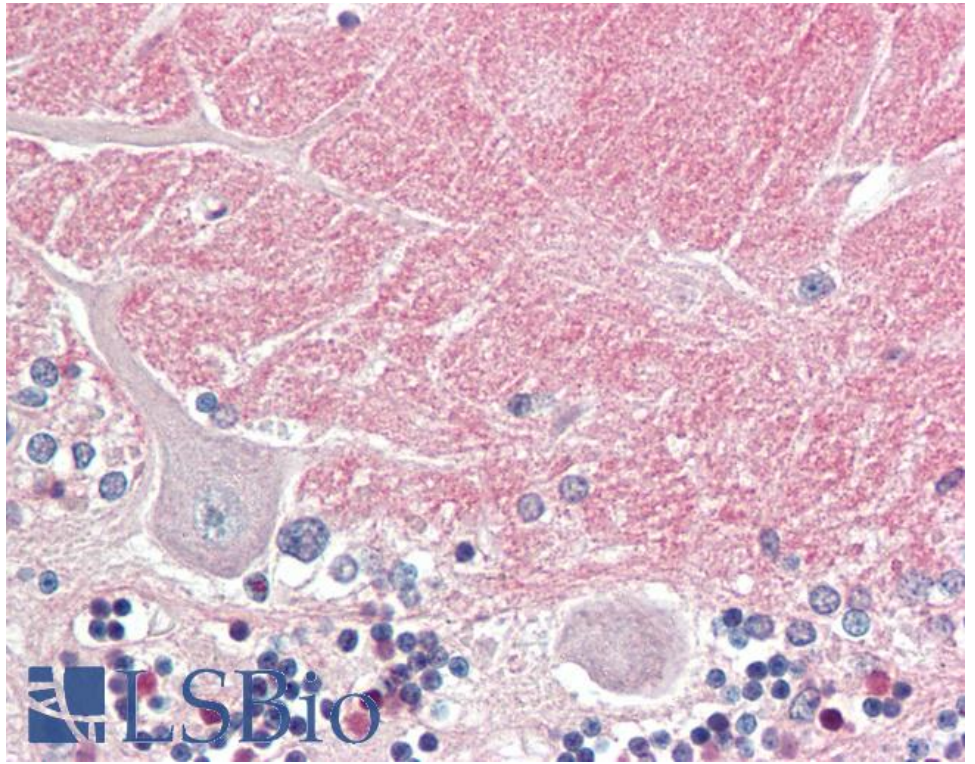
**Expected from sequence similarity:** Human, Mouse, Rat, Pig



EB12273 (0.3 $\mu$ g/ml) staining of Human Cerebellum (A), Mouse Brain (B) and Rat Brain (C) lysates (35 $\mu$ g protein in RIPA buffer). Detected by chemiluminescence.



EB12273 (0.3 $\mu$ g/ml) staining of Pig Brain lysate (35 $\mu$ g protein in RIPA buffer). Detected by chemiluminescence.



EB12273 (5µg/ml) staining of paraffin embedded Human Cerebellum. Steamed antigen retrieval with citrate buffer pH 6, AP-staining.