



## UK Office

### Everest Biotech Ltd

Cherwell Innovation Centre  
77 Heyford Park  
Upper Heyford  
Oxfordshire  
OX25 5HD  
UK

Enquiries:

[info@everestbiotech.com](mailto:info@everestbiotech.com)

Sales:

[sales@everestbiotech.com](mailto:sales@everestbiotech.com)

Tech support:

[support@everestbiotech.com](mailto:support@everestbiotech.com)

Tel: +44 (0)1869 238326

Fax: +44 (0)1869 238327

## US Office

### Everest Biotech c/o Abcore

405 Maple Street, Suite A106  
Ramona,  
CA 92065  
USA

Inquiries:

[info@everestbiotech.com](mailto:info@everestbiotech.com)

Sales:

[usasales@everestbiotech.com](mailto:usasales@everestbiotech.com)

Tech support:

[support@everestbiotech.com](mailto:support@everestbiotech.com)

Tel: 888-320-4628 (toll-free)

Fax: 888-841-9041

[www.everestbiotech.com](http://www.everestbiotech.com)

**Research Use Only. Not for  
diagnostic or therapeutic use.**

## EB11768 - Goat Anti-Contactin 4 / Big-2 (mouse aa160-172) Antibody

Size: 100µg specific antibody in 200µl



### Target Protein

**Principal Names:** 9630050B05, Axcam, axonal-associated cell adhesion molecule, BIG-2, brain-derived immunoglobulin superfamily molecule, brain-derived immunoglobulin superfamily protein 2, Cntn4, contactin 4, contactin-4

**Official Symbol:** Cntn4

**Accession Number(s):** NP\_001103219.1; NP\_766592.2

**Human GeneID(s):** [152330](#)

**Non-Human GeneID(s):** 269784 (mouse), 116658 (rat)

**Important Comments:** This antibody is expected to recognize both reported isoforms (NP\_001103219.1; NP\_766592.2). Reported variants represent identical protein: NP\_766592.2, NP\_001103221.1

### Immunogen

Peptide with sequence C-RRADGKPIARK, from the internal region of the protein sequence according to NP\_001103219.1; NP\_766592.2.

Please note the [peptide](#) is available for sale.

### Purification and Storage

Purified from goat serum by ammonium sulphate precipitation followed by antigen affinity chromatography using the immunizing peptide.

Supplied at 0.5 mg/ml in Tris saline, 0.02% sodium azide, pH7.3 with 0.5% bovine serum albumin.

Aliquot and store at -20°C. Minimize freezing and thawing.

### Applications Tested

**Peptide ELISA:** antibody detection limit dilution 1:128000.

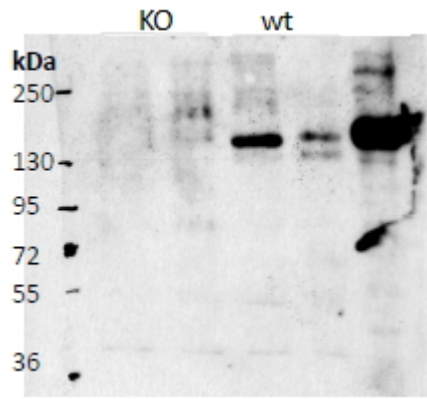
**Western blot:** Approx 150kDa band observed in Mouse Brain lysates and not in the same lysates from the KO mice (calculated MW of 113kDa according to NP\_001103219.1).

Recommended concentration: 0.5-1.5µg/ml.

### Species Reactivity

**Tested:** Mouse

**Expected from sequence similarity:** Human, Mouse, Rat, Dog



EB11768 (0.5 $\mu$ g/ml) staining of Mouse Olfactory bulb (lanes 1 and 3) and Cerebral cortex (lanes 2 and 4), comparing wildtype (lanes 3 and 4) with KO mice (lanes 1 and 2). The last lane contains a lysate of HEK293 overexpressing Mouse Cntn4 (lysate (35 $\mu$ g protein in RIPA buffer). Primary incubation was 1 hour. Detected by chemiluminescence. Data obtained from Gerrald Lodewijk and Peter Burbach, Rudolf Magnus Institute, Utrecht, Netherlands.