



International Office

Everest Biotech Ltd

Vector Laboratories, Inc.
6737 Mowry Ave
Newark, CA 94560
United States

Customer Service:

customerservice@vectorlabs.com

Technical Service:

technical@vectorlabs.com

Tel: +1 (800) 227-6666

www.everestbiotech.com

**Research Use Only. Not for
diagnostic or therapeutic use.**

EB10391 - Goat Anti-COPS3 Antibody

Size: 100µg specific antibody in 200µl



Target Protein

Principal Names: COP9 complex subunit 3, COP9 constitutive photomorphogenic homolog subunit 3, COP9 constitutive photomorphogenic homolog subunit 3 (Arabidopsis), CSN3, JAB1-containing signalosome subunit 3, SGN3, COPS3

Official Symbol: COPS3

Accession Number(s): NP_003644.2

Human GeneID(s): [8533](#)

Non-Human GeneID(s): 26572 (mouse), 287367 (rat)

Immunogen

Peptide with sequence C-SLYKKNIQRLT, from the internal region of the protein sequence according to NP_003644.2.

Please note the [peptide](#) is available for sale.

Purification and Storage

Purified from goat serum by ammonium sulphate precipitation followed by antigen affinity chromatography using the immunizing peptide.

Supplied at 0.5 mg/ml in Tris saline, 0.02% sodium azide, pH7.3 with 0.5% bovine serum albumin.

Aliquot and store at -20°C. Minimize freezing and thawing.

Applications Tested

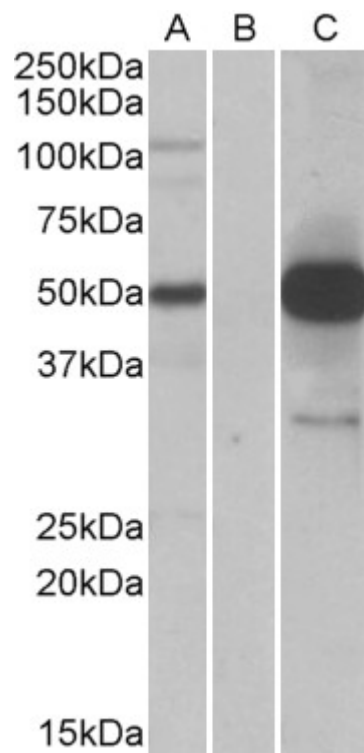
Peptide ELISA: antibody detection limit dilution 1:4000.

Western blot: In transfected HEK293 transiently expressing full-length Human COPS3 (myc and DYKDDDDK tagged), a band of approx. 50kDa was observed. No bands were observed in mock-transfected HEK293 and the same band was observed using anti-DYKDDDDK tag antibody. Recommended concentration, 1-2µg/ml.

Species Reactivity

Tested: Human

Expected from sequence similarity: Human, Mouse, Rat, Dog, Cow



HEK293 lysate (10ug protein in RIPA buffer) overexpressing Human COPS3 with DYKDDDDK tag probed with EB10391 (1.0ug/ml) in Lane A and probed with anti-DYKDDDDK Tag (1/5000) in lane C. Mock-transfected HEK293 probed with EB10391 (1mg/ml) in Lane B. Primary incubations were for 1 hour. Detected by chemiluminescence.