



## UK Office

### Everest Biotech Ltd

Cherwell Innovation Centre  
77 Heyford Park  
Upper Heyford  
Oxfordshire  
OX25 5HD  
UK

Enquiries:

[info@everestbiotech.com](mailto:info@everestbiotech.com)

Sales:

[sales@everestbiotech.com](mailto:sales@everestbiotech.com)

Tech support:

[support@everestbiotech.com](mailto:support@everestbiotech.com)

Tel: +44 (0)1869 238326

[www.everestbiotech.com](http://www.everestbiotech.com)

**Research Use Only. Not for  
diagnostic or therapeutic use.**

## EB06357 - Goat Anti-Coronin 3 / coronin 1C Antibody

Size: 100µg specific antibody in 200µl



### Target Protein

**Principal Names:** coronin-3, coronin 1C, CORO1C, HCRNN4, coronin, actin binding protein, 1C, coronin 1C, coronin, actin-binding protein, 1C

**Official Symbol:** CORO1C

**Accession Number(s):** NP\_055140.1

**Human GeneID(s):** [23603](#)

### Immunogen

Peptide with sequence C-RISKLEQQMAKIAA, from the C Terminus of the protein sequence according to NP\_055140.1.

Please note the [peptide](#) is available for sale.

### Purification and Storage

Purified from goat serum by ammonium sulphate precipitation followed by antigen affinity chromatography using the immunizing peptide.

Supplied at 0.5 mg/ml in Tris saline, 0.02% sodium azide, pH7.3 with 0.5% bovine serum albumin.

Aliquot and store at -20°C. Minimize freezing and thawing.

### Applications Tested

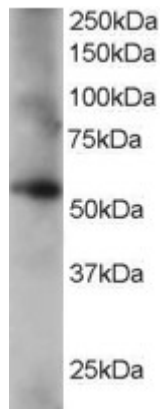
**Peptide ELISA:** antibody detection limit dilution 1:64000.

**Western blot:** Approx 55kDa band observed in human lung and placenta lysates (calculated MW of 53.2kDa according to NP\_055140.1). Recommended for use at 0.2-1µg/ml.

### Species Reactivity

**Tested:** Human

**Expected from sequence similarity:** Human, Pig, Cow



EB06357 staining (0.2 $\mu$ g/ml) of human lung lysate (RIPA buffer, 35 $\mu$ g total protein per lane). Primary incubated for 1 hour. Detected by western blot using chemiluminescence.