



## UK Office

### Everest Biotech Ltd

Cherwell Innovation Centre  
77 Heyford Park  
Upper Heyford  
Oxfordshire  
OX25 5HD  
UK

Enquiries:

[info@everestbiotech.com](mailto:info@everestbiotech.com)

Sales:

[sales@everestbiotech.com](mailto:sales@everestbiotech.com)

Tech support:

[support@everestbiotech.com](mailto:support@everestbiotech.com)

Tel: +44 (0)1869 238326

Fax: +44 (0)1869 238327

## US Office

### Everest Biotech c/o Abcore

405 Maple Street, Suite A106  
Ramona,  
CA 92065  
USA

Inquiries:

[info@everestbiotech.com](mailto:info@everestbiotech.com)

Sales:

[usasales@everestbiotech.com](mailto:usasales@everestbiotech.com)

Tech support:

[support@everestbiotech.com](mailto:support@everestbiotech.com)

Tel: 888-320-4628 (toll-free)

Fax: 888-841-9041

[www.everestbiotech.com](http://www.everestbiotech.com)

**Research Use Only. Not for  
diagnostic or therapeutic use.**

## EB05253 - Goat Anti-Cortactin / EMS1 Antibody

Size: 100µg specific antibody in 200µl



### Target Protein

**Principal Names:** EMS1, CORTACTIN, ems1 sequence (mammary tumor and squamous cell carcinoma-associated (p80/85 src substrate), Ctttn, oncogene EMS1, CTTN, FLJ34459, 1110020L01Rik

**Official Symbol:** CTTN

**Accession Number(s):** NP\_005222.2; NP\_612632.1

**Human GeneID(s):** [2017](#)

**Non-Human GeneID(s):** 13043 (mouse)

**Important Comments:** This antibody is expected to recognize both reported isoforms (NP\_005222.2; NP\_612632.1).

### Immunogen

Peptide with sequence WKASAGHAVSIA-C, from the N Terminus of the protein sequence according to NP\_005222.2; NP\_612632.1.

Please note the [peptide](#) is available for sale.

### Purification and Storage

Purified from goat serum by ammonium sulphate precipitation followed by antigen affinity chromatography using the immunizing peptide.

Supplied at 0.5 mg/ml in Tris saline, 0.02% sodium azide, pH7.3 with 0.5% bovine serum albumin.

Aliquot and store at -20°C. Minimize freezing and thawing.

### Applications Tested

**Peptide ELISA:** antibody detection limit dilution 1:32000.

**Western blot:** Approx. 80kDa band observed in Human, Mouse and Rat Brain lysates and in lysates of cell line HEK293 (calculated MW of 61.6kDa according to Human NP\_005222.2 and of 61.2kDa according to Mouse NP\_031829.2). The observed molecular weight corresponds to earlier findings in literature with different antibodies (Paradis et al, J Cell Sci. 2008 Jun 15;121(Pt 12):1965-72; PMID 18495841).

Recommended concentration: 0.01-0.03µg/ml.

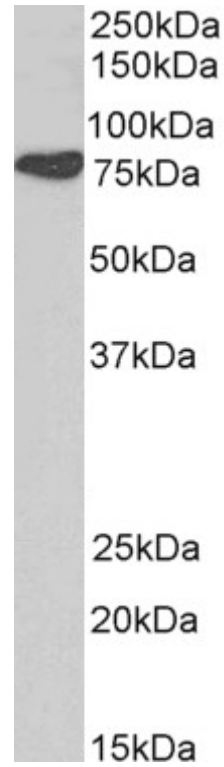
### Species Reactivity

**Tested:** Human, Mouse, Rat

**Expected from sequence similarity:** Human, Mouse, Rat, Dog, Cow



EB05253 (0.01 $\mu$ g/ml) staining of Mouse Brain lysate (35 $\mu$ g protein in RIPA buffer). Primary incubation was 1 hour. Detected by chemiluminescence.



EB05253 (0.1 $\mu$ g/ml) staining of Human Brain (Cerebellum) lysate (35 $\mu$ g protein in RIPA buffer). Primary incubation was 1 hour. Detected by chemiluminescence



EB05253 (0.03µg/ml) staining of HEK293 cell lysate (35µg protein in RIPA buffer). Primary incubation was 1 hour. Detected by chemiluminescence