

UK Office

Everest Biotech Ltd

Cherwell Innovation Centre
77 Heyford Park
Upper Heyford
Oxfordshire
OX25 5HD
UK

Enquiries:

info@everestbiotech.com

Sales:

sales@everestbiotech.com

Tech support:

support@everestbiotech.com

Tel: +44 (0)1869 238326

Fax: +44 (0)1869 238327

US Office

Everest Biotech c/o Abcore

405 Maple Street, Suite A106
Ramona,
CA 92065
USA

Inquiries:

info@everestbiotech.com

Sales:

usasales@everestbiotech.com

Tech support:

support@everestbiotech.com

Tel: 888-320-4628 (toll-free)

Fax: 888-841-9041

www.everestbiotech.com

**Research Use Only. Not for
diagnostic or therapeutic use.**

EB05285-T - Goat Anti-COX1 / PTGS1 Antibody - Trial

Size: 20µg specific antibody in 40µl



Target Protein

Principal Names: PTGS1, COX1, COX3, PHS1, PCOX1, PGHS1, PTGHS, PGG/HS, PGHS-1, prostaglandin-endoperoxide synthase 1 (prostaglandin G/H synthase and cyclooxygenase), prostaglandin G/H synthase and cyclooxygenase, RP11-542K23.6

Official Symbol: PTGS1

Accession Number(s): NP_000953.2; NP_542158.1

Human GeneID(s): [5742](#)

Important Comments: This antibody is expected to recognise both human isoforms of this protein according to NP_000953.2 and NP_542158.1.

Immunogen

Peptide with sequence C-QDDGPAVERPSTEL, from the C Terminus of the protein sequence according to NP_000953.2; NP_542158.1.

Please note the [peptide](#) is available for sale.

Purification and Storage

Purified from goat serum by ammonium sulphate precipitation followed by antigen affinity chromatography using the immunizing peptide.

Supplied at 0.5 mg/ml in Tris saline, 0.02% sodium azide, pH7.3 with 0.5% bovine serum albumin.

Aliquot and store at -20°C. Minimize freezing and thawing.

Applications Tested

Peptide ELISA: antibody detection limit dilution 1:32000.

Western blot: Approx 70kDa band observed in lysates of histiocytic lymphoma cell line U937 (calculated MW of 68.7kDa according to NP_000953.2) Recommended for use at 0.3-1µg/ml. Primary incubation 1 hour at room temperature.

IHC: In paraffin embedded Human Heart shows patchy staining of myocardial fibres in longitudinal section. Recommended concentration, 3-5µg/ml.

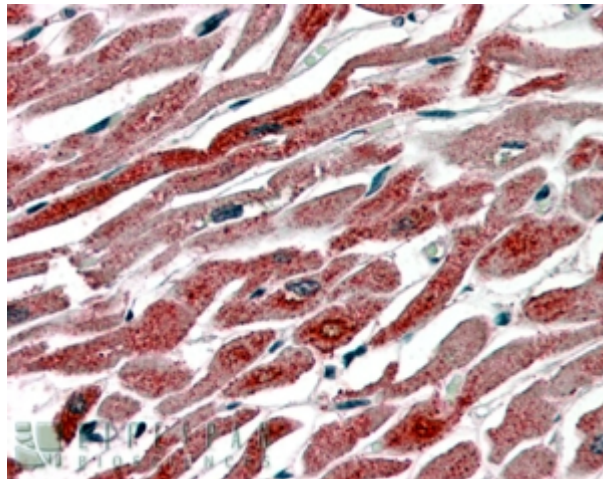
Species Reactivity

Tested: Human

Expected from sequence similarity: Human



EB05285 (1 μ g/ml) staining of U937 cell lysate (35 μ g protein in RIPA buffer). Detected by chemiluminescence.



EB05285 (3.8 μ g/ml) staining of paraffin embedded Human Heart. Steamed antigen retrieval with citrate buffer pH 6, AP-staining.