

## UK Office

### Everest Biotech Ltd

Cherwell Innovation Centre  
77 Heyford Park  
Upper Heyford  
Oxfordshire  
OX25 5HD  
UK

Enquiries:

[info@everestbiotech.com](mailto:info@everestbiotech.com)

Sales:

[sales@everestbiotech.com](mailto:sales@everestbiotech.com)

Tech support:

[support@everestbiotech.com](mailto:support@everestbiotech.com)

Tel: +44 (0)1869 238326

[www.everestbiotech.com](http://www.everestbiotech.com)

**Research Use Only. Not for  
diagnostic or therapeutic use.**

## EB05285 - Goat Anti-COX1 / PTGS1 Antibody

Size: 100µg specific antibody in 200µl



### Target Protein

**Principal Names:** PTGS1, COX1, COX3, PHS1, PCOX1, PGHS1, PTGHS, PGG/HS, PGHS-1, prostaglandin-endoperoxide synthase 1 (prostaglandin G/H synthase and cyclooxygenase), prostaglandin G/H synthase and cyclooxygenase, RP11-542K23.6

**Official Symbol:** PTGS1

**Accession Number(s):** NP\_000953.2; NP\_542158.1

**Human GeneID(s):** [5742](#)

**Important Comments:** This antibody is expected to recognise both human isoforms of this protein according to NP\_000953.2 and NP\_542158.1.

### Immunogen

Peptide with sequence C-QDDGPAVERPSTEL, from the C Terminus of the protein sequence according to NP\_000953.2; NP\_542158.1.

Please note the [peptide](#) is available for sale.

### Purification and Storage

Purified from goat serum by ammonium sulphate precipitation followed by antigen affinity chromatography using the immunizing peptide.

Supplied at 0.5 mg/ml in Tris saline, 0.02% sodium azide, pH7.3 with 0.5% bovine serum albumin.

Aliquot and store at -20°C. Minimize freezing and thawing.

### Applications Tested

**Peptide ELISA:** antibody detection limit dilution 1:32000.

**Western blot:** Approx 70kDa band observed in lysates of histiocytic lymphoma cell line U937 (calculated MW of 68.7kDa according to NP\_000953.2) Recommended for use at 0.3-1µg/ml. Primary incubation 1 hour at room temperature.

**IHC:** In paraffin embedded Human Heart shows patchy staining of myocardial fibres in longitudinal section. Recommended concentration, 3-5µg/ml.

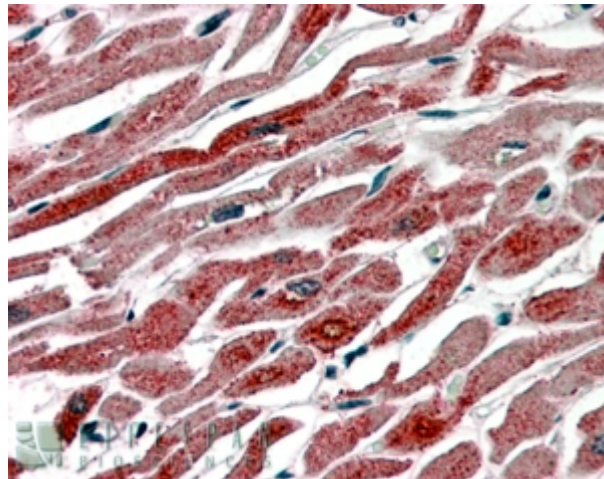
### Species Reactivity

**Tested:** Human

**Expected from sequence similarity:** Human



EB05285 (1 $\mu$ g/ml) staining of U937 cell lysate (35 $\mu$ g protein in RIPA buffer). Detected by chemiluminescence.



EB05285 (3.8 $\mu$ g/ml) staining of paraffin embedded Human Heart. Steamed antigen retrieval with citrate buffer pH 6, AP-staining.