



International Office

Everest Biotech Ltd

Vector Laboratories, Inc.
6737 Mowry Ave
Newark, CA 94560
United States

Customer Service:

customerservice@vectorlabs.com

Technical Service:

technical@vectorlabs.com

Tel: +1 (800) 227-6666

www.everestbiotech.com

**Research Use Only. Not for
diagnostic or therapeutic use.**

EB07914 - Goat Anti-COX4I1 Antibody

Size: 100µg specific antibody in 200µl



Target Protein

Principal Names: COX4I1, cytochrome c oxidase subunit IV isoform 1, COX4, COXIV, MGC72016, COX4-1, COXIV-1, cytochrome c oxidase polypeptide IV

Official Symbol: COX4I1

Accession Number(s): NP_001852.1; NP_001305726.1

Human GeneID(s): [1327](#)

Important Comments: This antibody is expected to recognize reported isoforms 1 and 4 (NP_001852.1; NP_001305726.1). Reported variants represent identical protein: NP_001305715.1, NP_001852.1. This product may cross-react to COX4I2 (GeneID 84701).

Immunogen

Peptide with sequence C-QGLASKWDYEKNE, from the C Terminus of the protein sequence according to NP_001852.1; NP_001305726.1.

Please note the [peptide](#) is available for sale.

Purification and Storage

Purified from goat serum by ammonium sulphate precipitation followed by antigen affinity chromatography using the immunizing peptide.

Supplied at 0.5 mg/ml in Tris saline, 0.02% sodium azide, pH7.3 with 0.5% bovine serum albumin.

Aliquot and store at -20°C. Minimize freezing and thawing.

Applications Tested

Peptide ELISA: antibody detection limit dilution 1:4000.

Western blot: Approx 18kDa band observed in human skeletal muscle lysates (calculated MW of 19.6kDa according to NP_001852.1). Recommended concentration: 0.01-0.03µg/ml.

IHC: Paraffin embedded Human Thyroid and Testis. Recommended concentration: 2.5µg/ml.

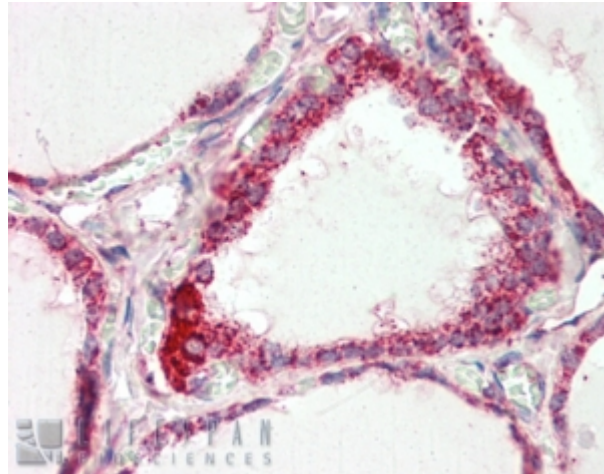
Species Reactivity

Tested: Human

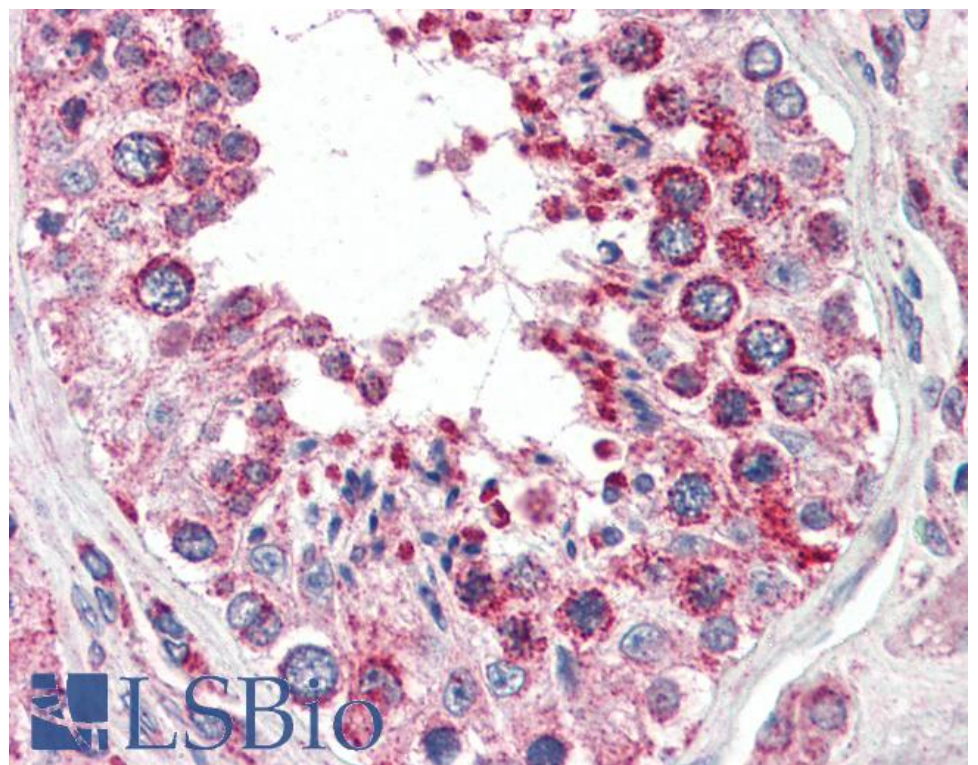
Expected from sequence similarity: Human

250kDa
150kDa
100kDa
75kDa
50kDa
37kDa
25kDa
20kDa
15kDa

EB07914 (0.01µg/ml) staining of human muscle lysate (35µg protein in RIPA buffer). Primary incubation was 1 hour. Detected by chemiluminescence.



EB07914 (2.5µg/ml) staining of paraffin embedded Human Thyroid Gland. Steamed antigen retrieval with citrate buffer pH 6, AP-staining.



EB07914 (2.5µg/ml) staining of paraffin embedded Human Testis. Steamed antigen retrieval with citrate buffer pH 6, AP-staining.