

## UK Office

### Everest Biotech Ltd

Cherwell Innovation Centre  
77 Heyford Park  
Upper Heyford  
Oxfordshire  
OX25 5HD  
UK

Enquiries:

[info@everestbiotech.com](mailto:info@everestbiotech.com)

Sales:

[sales@everestbiotech.com](mailto:sales@everestbiotech.com)

Tech support:

[support@everestbiotech.com](mailto:support@everestbiotech.com)

Tel: +44 (0)1869 238326

[www.everestbiotech.com](http://www.everestbiotech.com)

**Research Use Only. Not for  
diagnostic or therapeutic use.**

## EB07419 - Goat Anti-CPT1A Antibody

Size: 100µg specific antibody in 200µl



### Target Protein

**Principal Names:** CPT1A, carnitine palmitoyltransferase 1A (liver), CPT1, CPT1-L, L-CPT1, carnitine palmitoyltransferase 1A, carnitine palmitoyltransferase I, carnitine palmitoyltransferase I, liver

**Official Symbol:** CPT1A

**Accession Number(s):** NP\_001867.2; NP\_001027017.1

**Human GeneID(s):** [1374](#)

**Important Comments:** This antibody is expected to recognize both reported isoforms (NP\_001867.2; NP\_001027017.1) but is not expected to recognise CPT1B.

### Immunogen

Peptide with sequence C-DPAQTVEQRLKLFK, from the internal region of the protein sequence according to NP\_001867.2; NP\_001027017.1.

Please note the [peptide](#) is available for sale.

### Purification and Storage

Purified from goat serum by ammonium sulphate precipitation followed by antigen affinity chromatography using the immunizing peptide.

Supplied at 0.5 mg/ml in Tris saline, 0.02% sodium azide, pH7.3 with 0.5% bovine serum albumin.

Aliquot and store at -20°C. Minimize freezing and thawing.

### Applications Tested

**Peptide ELISA:** antibody detection limit dilution 1:128000.

**Western blot:** Approx 80-85kDa band observed in lysates of cell line MCF7 (calculated MW of 86.2kDa according to NP\_001027017.1). Recommended concentration: 1-3µg/ml. Primary incubation 1 hour at room temperature.

**IHC:** Paraffin embedded Human Liver. Recommended concentration: 5-7µg/ml.

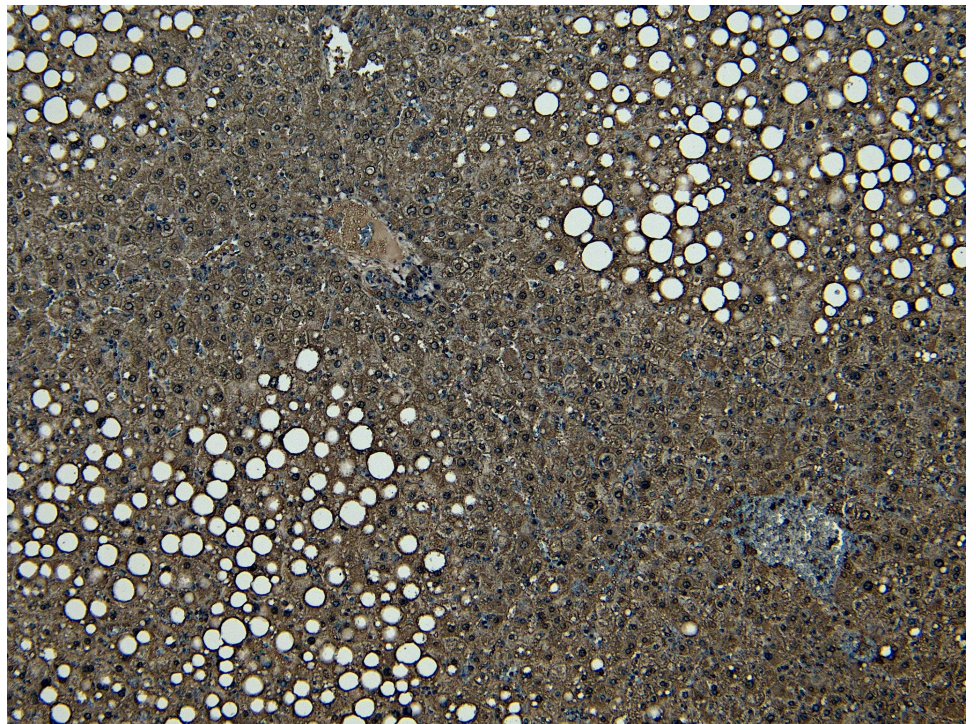
### Species Reactivity

**Tested:** Human

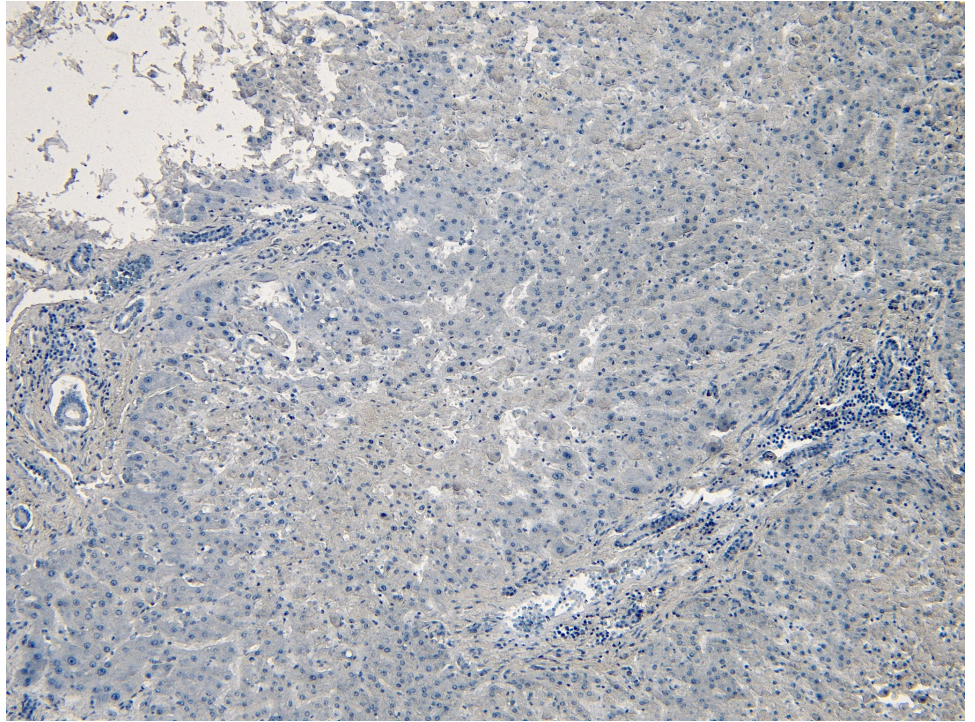
**Expected from sequence similarity:** Human



EB07419 (2 $\mu$ g/ml) staining of MCF7 cell lysate (35 $\mu$ g protein in RIPA buffer). Detected by chemiluminescence.



EB07419 (5 $\mu$ g/ml) staining of paraffin embedded Human Liver. Heat induced antigen retrieval with citrate buffer pH 6, HRP-staining.



EB07419 Negative Control showing staining of paraffin embedded Human Liver, with no primary antibody.