



International Office

Everest Biotech Ltd

Vector Laboratories, Inc.
6737 Mowry Ave
Newark, CA 94560
United States

Customer Service:

customerservice@vectorlabs.com

Technical Service:

technical@vectorlabs.com

Tel: +1 (800) 227-6666

www.everestbiotech.com

**Research Use Only. Not for
diagnostic or therapeutic use.**

EB09737 - Goat Anti-CPT2 (aa406-418) Antibody

Size: 100µg specific antibody in 200µl



Target Protein

Principal Names: CPT2, carnitine palmitoyltransferase II, CPT1, CPTASE, OTTHUMP00000010493, carnitine O-palmitoyltransferase

Official Symbol: CPT2

Accession Number(s): NP_000089.1

Human GeneID(s): [1376](#)

Immunogen

Peptide with sequence C-TDSTVTQKLNFE, from the internal region of the protein sequence according to NP_000089.1.

Please note the [peptide](#) is available for sale.

Purification and Storage

Purified from goat serum by ammonium sulphate precipitation followed by antigen affinity chromatography using the immunizing peptide.

Supplied at 0.5 mg/ml in Tris saline, 0.02% sodium azide, pH7.3 with 0.5% bovine serum albumin.

Aliquot and store at -20°C. Minimize freezing and thawing.

Applications Tested

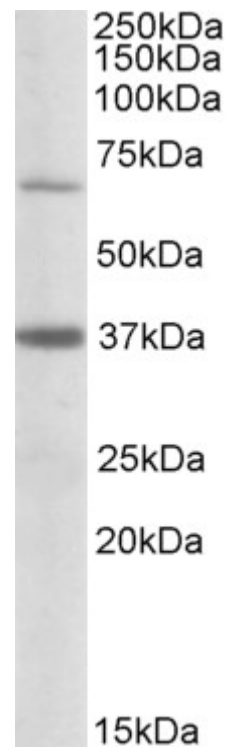
Peptide ELISA: antibody detection limit dilution 1:4000.

Western blot: Experiments gave bands at approx 70kDa and 37kDa in Human Liver lysates. These bands correspond to earlier findings with different antibodies from other sources. This protein has a calculated MW of 73.8kDa according to NP_000089.1. Recommended concentration: 1-3µg/ml.

Species Reactivity

Tested: Human

Expected from sequence similarity: Human



EB09737 (0.5µg/ml) staining of Human Liver lysate (35µg protein in RIPA buffer). Primary incubation was 1 hour.
Detected by chemiluminescence.