



UK Office

Everest Biotech Ltd

Cherwell Innovation Centre
77 Heyford Park
Upper Heyford
Oxfordshire
OX25 5HD
UK

Enquiries:

info@everestbiotech.com

Sales:

sales@everestbiotech.com

Tech support:

support@everestbiotech.com

Tel: +44 (0)1869 238326

www.everestbiotech.com

**Research Use Only. Not for
diagnostic or therapeutic use.**

EB11997 - Goat Anti-creatine kinase M-type (aa258-270) Antibody

Size: 100µg specific antibody in 200µl



Target Protein

Principal Names: CKM, creatine kinase, muscle, CKMM, M-CK, creatine kinase M chain, creatine kinase M-type, creatine kinase-M

Official Symbol: CKM

Accession Number(s): NP_001815.2

Human GeneID(s): [1158](#)

Non-Human GeneID(s): 12715 (mouse), 24265 (rat)

Immunogen

Peptide with sequence C-QKIEEIFKKAGHP, from the internal region of the protein sequence according to NP_001815.2.

Please note the [peptide](#) is available for sale.

Purification and Storage

Purified from goat serum by ammonium sulphate precipitation followed by antigen affinity chromatography using the immunizing peptide.

Supplied at 0.5 mg/ml in Tris saline, 0.02% sodium azide, pH7.3 with 0.5% bovine serum albumin.

Aliquot and store at -20°C. Minimize freezing and thawing.

Applications Tested

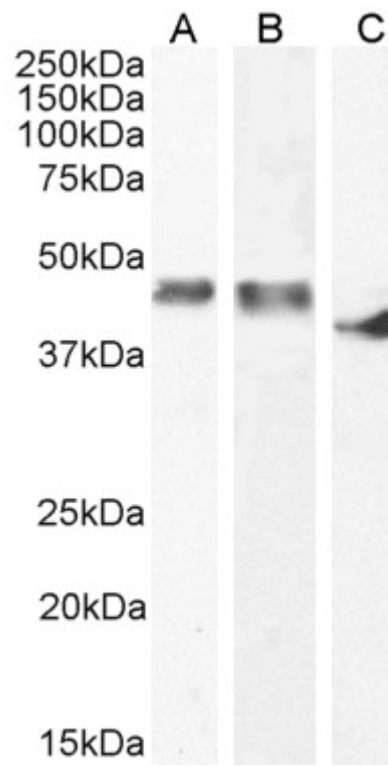
Peptide ELISA: antibody detection limit dilution 1:8000.

Western blot: Approx 45kDa band observed in Human and Pig Heart lysates, and approx 40kDa in Rat Heart lysates (calculated MW of 43.1kDa according to Human NP_001815.2 and 43kDa according to Rat NP_036662.1 and Pig NP_001123421.1). Recommended concentration: 0.1-0.3µg/ml. Primary incubation 1 hour at room temperature.

Species Reactivity

Tested: Human, Rat, Pig

Expected from sequence similarity: Human, Mouse, Rat, Dog, Pig, Cow



EB11997 (0.3 μ g/ml) staining of Human (A) Pig (B) and (0.1 μ g/ml) Rat (C) Heart lysates (35 μ g protein in RIPA buffer). Detected by chemiluminescence.