



UK Office

Everest Biotech Ltd

Cherwell Innovation Centre
77 Heyford Park
Upper Heyford
Oxfordshire
OX25 5HD
UK

Enquiries:

info@everestbiotech.com

Sales:

sales@everestbiotech.com

Tech support:

support@everestbiotech.com

Tel: +44 (0)1869 238326

www.everestbiotech.com

**Research Use Only. Not for
diagnostic or therapeutic use.**

EB11996 - Goat Anti-creatine kinase M-type Antibody

Size: 100µg specific antibody in 200µl



Target Protein

Principal Names: CKM, creatine kinase, muscle, CKMM, M-CK, creatine kinase M chain, creatine kinase M-type, creatine kinase-M

Official Symbol: CKM

Accession Number(s): NP_001815.2

Human GeneID(s): [1158](#)

Immunogen

Peptide with sequence NTHNKFKLNYKPEE-C, from the N Terminus of the protein sequence according to NP_001815.2.

Please note the [peptide](#) is available for sale.

Purification and Storage

Purified from goat serum by ammonium sulphate precipitation followed by antigen affinity chromatography using the immunizing peptide.

Supplied at 0.5 mg/ml in Tris saline, 0.02% sodium azide, pH7.3 with 0.5% bovine serum albumin.

Aliquot and store at -20°C. Minimize freezing and thawing.

Applications Tested

Peptide ELISA: antibody detection limit dilution 1:128000.

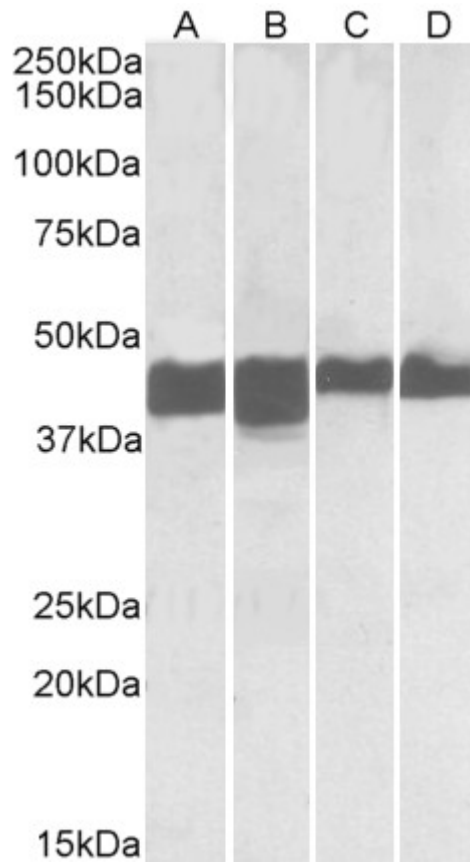
Western blot: Approx 45kDa band observed in Human and Mouse Skeletal Muscle and Heart lysates (calculated MW of 43.1kDa according to NP_001815.2). Recommended concentration: 0.01-0.03µg/ml. Primary incubation was 1 hour.

IHC: Paraffin embedded Human Heart. Recommended concentration: 5µg/ml.

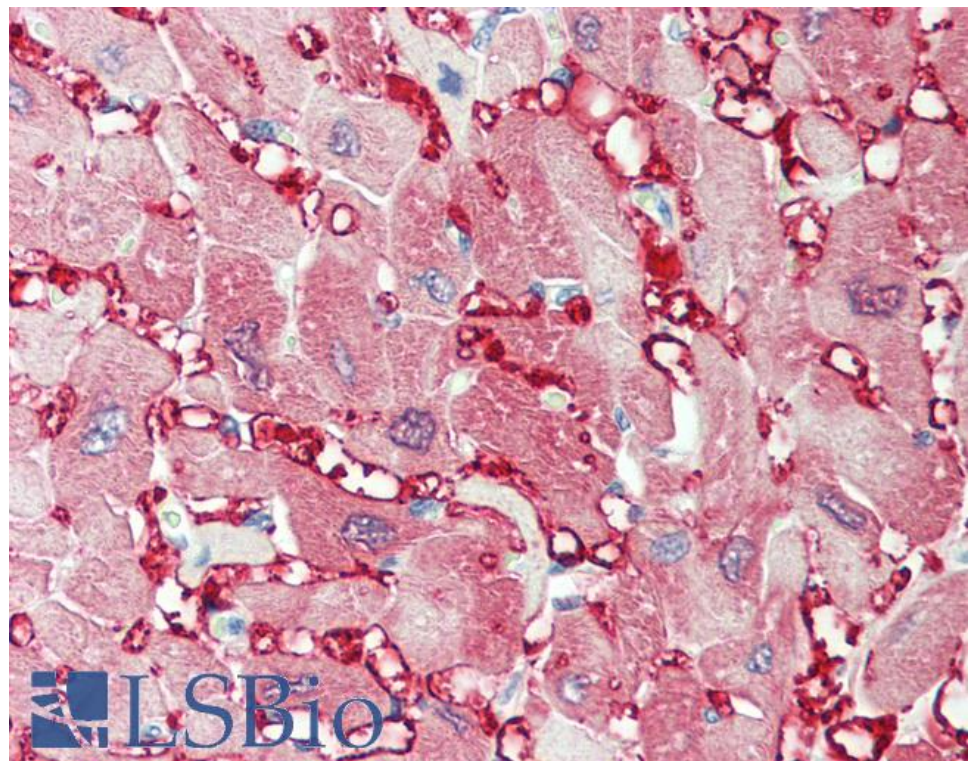
Species Reactivity

Tested: Human, Mouse

Expected from sequence similarity: Human, Mouse, Dog



EB11996 (0.01 μ g/ml) staining of Human (A, C) and Mouse (B, D) Skeletal Muscle (A, B) and Heart (C, D) lysates (35 μ g protein in RIPA buffer). Detected by chemiluminescence.



EB11996 (5 μ g/ml) staining of paraffin embedded Human Heart. Steamed antigen retrieval with citrate buffer pH 6, AP-staining.