



## UK Office

### Everest Biotech Ltd

Cherwell Innovation Centre  
77 Heyford Park  
Upper Heyford  
Oxfordshire  
OX25 5HD  
UK

Enquiries:

[info@everestbiotech.com](mailto:info@everestbiotech.com)

Sales:

[sales@everestbiotech.com](mailto:sales@everestbiotech.com)

Tech support:

[support@everestbiotech.com](mailto:support@everestbiotech.com)

Tel: +44 (0)1869 238326

Fax: +44 (0)1869 238327

## US Office

### Everest Biotech c/o Abcore

405 Maple Street, Suite A106  
Ramona,  
CA 92065  
USA

Inquiries:

[info@everestbiotech.com](mailto:info@everestbiotech.com)

Sales:

[usasales@everestbiotech.com](mailto:usasales@everestbiotech.com)

Tech support:

[support@everestbiotech.com](mailto:support@everestbiotech.com)

Tel: 888-320-4628 (toll-free)

Fax: 888-841-9041

[www.everestbiotech.com](http://www.everestbiotech.com)

**Research Use Only. Not for  
diagnostic or therapeutic use.**

## EB10642 - Goat Anti-Creatine transporter 1 / SLC6A8 Antibody

Size: 100µg specific antibody in 200µl



### Target Protein

**Principal Names:** SLC6A8, solute carrier family 6 (neurotransmitter transporter, creatine), member 8, CRT, CRTR, CT1, MGC87396, creatine transporter 1, creatine transporter SLC6A8, sodium- and chloride-dependent creatine transporter 1

**Official Symbol:** SLC6A8

**Accession Number(s):** NP\_005620.1; NP\_001136277.1; NP\_001136278.1

**Human GeneID(s):** [6535](#)

**Non-Human GeneID(s):** 102857 (mouse), 50690 (rat)

**Important Comments:** This antibody is expected to recognize all reported isoforms (NP\_005620.1; NP\_001136277.1; NP\_001136278.1).

### Immunogen

Peptide with sequence ASLANLTCDQLADRR, from the internal region of the protein sequence according to NP\_005620.1; NP\_001136277.1; NP\_001136278.1.

Please note the [peptide](#) is available for sale.

### Purification and Storage

Purified from goat serum by ammonium sulphate precipitation followed by antigen affinity chromatography using the immunizing peptide.

Supplied at 0.5 mg/ml in Tris saline, 0.02% sodium azide, pH7.3 with 0.5% bovine serum albumin.

Aliquot and store at -20°C. Minimize freezing and thawing.

### Applications Tested

**Peptide ELISA:** antibody detection limit dilution 1:8000.

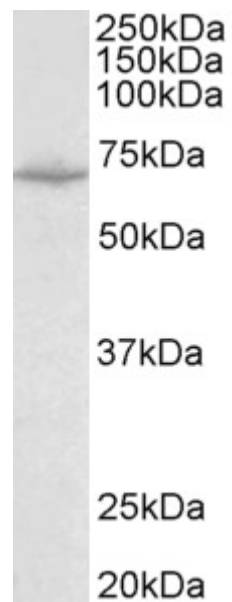
**Western blot:** Approx 70kDa band observed in Mouse Heart lysates (calculated MW of 71.0kDa according to Mouse NP\_598748.1). Recommended concentration: 0.1-0.3µg/ml. Primary incubation was 1 hour.

**IHC:** Paraffin embedded Human Kidney. Recommended concentration: 5µg/ml.

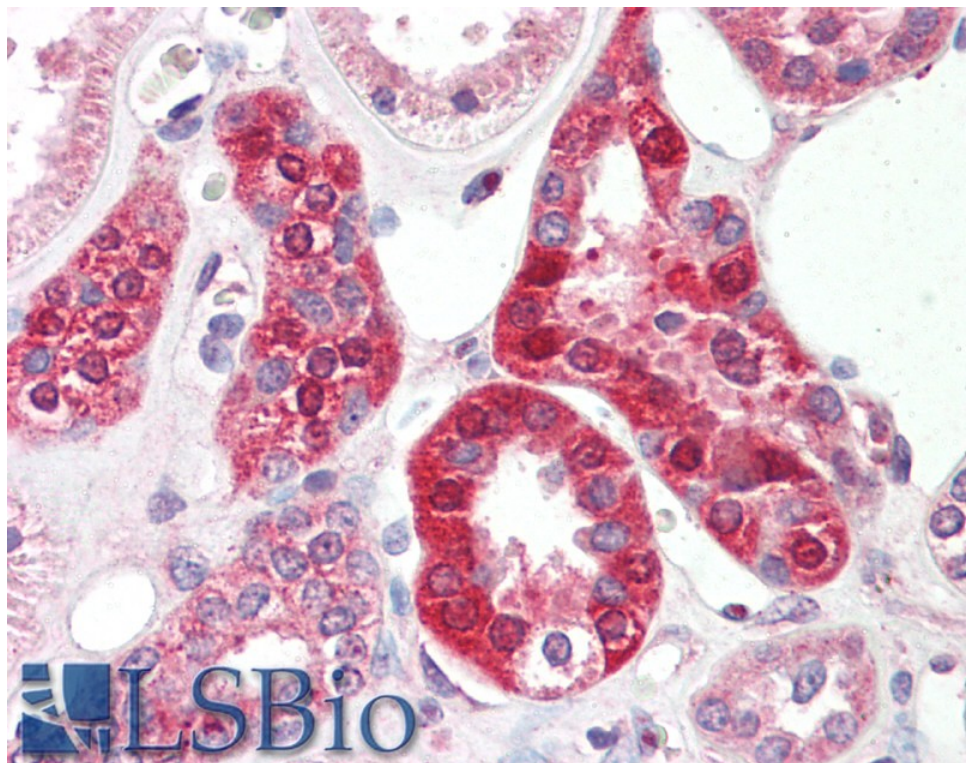
### Species Reactivity

**Tested:** Mouse, Human

**Expected from sequence similarity:** Human, Mouse, Rat, Dog, Pig, Cow



EB10642 (0.1 $\mu$ g/ml) staining of Mouse Heart lysate (35 $\mu$ g protein in RIPA buffer). Detected by chemiluminescence.



EB10642 (5 $\mu$ g/ml) staining of paraffin embedded Human Kidney. Steamed antigen retrieval with citrate buffer pH 6, AP-staining.