

UK Office

Everest Biotech Ltd

Cherwell Innovation Centre
77 Heyford Park
Upper Heyford
Oxfordshire
OX25 5HD
UK

Enquiries:

info@everestbiotech.com

Sales:

sales@everestbiotech.com

Tech support:

support@everestbiotech.com

Tel: +44 (0)1869 238326

www.everestbiotech.com

**Research Use Only. Not for
diagnostic or therapeutic use.**

EB12171 - Goat Anti-CREB1 (aa96-109) Antibody

Size: 100µg specific antibody in 200µl



Target Protein

Principal Names: CREB1, cAMP responsive element binding protein 1, CREB, CREB-1, active transcription factor CREB, cAMP-response element-binding protein-1, cAMP-responsive element-binding protein 1, cyclic AMP-responsive element-binding protein 1, transactivator protein

Official Symbol: CREB1

Accession Number(s): NP_004370.1; NP_604391.1

Human GeneID(s): [1385](#)

Non-Human GeneID(s): 12912 (mouse)

Important Comments: This antibody is expected to recognize both reported isoforms (NP_004370.1; NP_604391.1).

Immunogen

Peptide with sequence C-DSQESVDSVTDSQK, from the internal region of the protein sequence according to NP_004370.1; NP_604391.1.

Please note the [peptide](#) is available for sale.

Purification and Storage

Purified from goat serum by ammonium sulphate precipitation followed by antigen affinity chromatography using the immunizing peptide.

Supplied at 0.5 mg/ml in Tris saline, 0.02% sodium azide, pH7.3 with 0.5% bovine serum albumin.

Aliquot and store at -20°C. Minimize freezing and thawing.

Applications Tested

Peptide ELISA: antibody detection limit dilution 1:128000.

Western blot: Approx 45kDa band observed in nuclear lysates of cell lines Jurkat and NIH3T3 (calculated MW of 36.7kDa according to NP_604391.1). This molecular weight is routinely observed by other sources. Recommended concentration: 0.1-0.3µg/ml. Primary incubation was 1 hour.

IHC: Paraffin embedded Human Prostate. Recommended concentration: 2.5µg/ml.

Additional validation: This antibody has been successfully used in the following paper: Sikorski et al. (2018) PMID: 30377371.

Species Reactivity

Tested: Human, Mouse

Expected from sequence similarity: Human, Mouse, Dog, Pig, Cow

Specific Reference

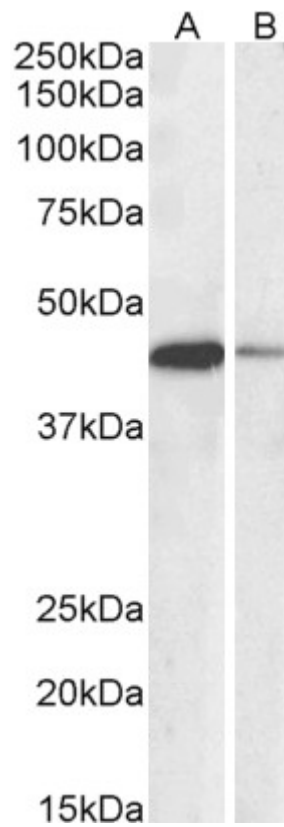
This antibody has been successfully used in the following paper:

Krzysztof Sikorski, Adi Mehta, Marit Inngjerdigen, Flourina Thakor, Simon Kling, Tomas Kalina, Tuula A. Nyman, Maria Ekman Stensland, Wei Zhou, Gustavo A. De Souza, Lars Holden, Jan Stuchly, Markus Templin and Fridtjof Lund-Johansen

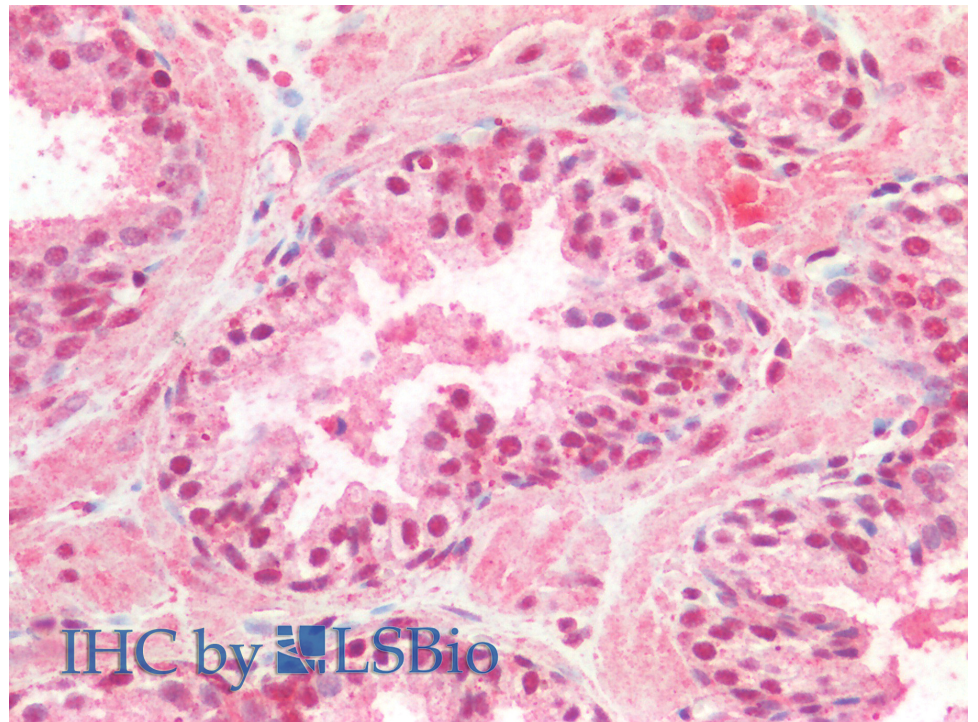
A high-throughput pipeline for validation of antibodies

Nat Methods. 2018 Nov;15(11):909-912

PMID: 30377371



EB12171 (0.1µg/ml) staining of Jurkat (A) and NIH3T3 (B) nuclear lysates (35µg protein in RIPA buffer). Detected by chemiluminescence.



EB12171 (2.5µg/ml) staining of paraffin embedded Human Prostate. Steamed antigen retrieval with citrate buffer pH 6, AP-staining.