

## UK Office

### Everest Biotech Ltd

Cherwell Innovation Centre  
77 Heyford Park  
Upper Heyford  
Oxfordshire  
OX25 5HD  
UK

Enquiries:

[info@everestbiotech.com](mailto:info@everestbiotech.com)

Sales:

[sales@everestbiotech.com](mailto:sales@everestbiotech.com)

Tech support:

[support@everestbiotech.com](mailto:support@everestbiotech.com)

Tel: +44 (0)1869 238326

[www.everestbiotech.com](http://www.everestbiotech.com)

**Research Use Only. Not for  
diagnostic or therapeutic use.**

## EB12173 - Goat Anti-CREB3 (aa76-87) Antibody

Size: 100µg specific antibody in 200µl



### Target Protein

**Principal Names:** CREB3, cAMP responsive element binding protein 3, LUMAN, LZIP, CREB-3, basic leucine zipper protein, cAMP-responsive element-binding protein 3, cyclic AMP response element (CRE)-binding protein/activating transcription factor 1, cyclic AMP-responsive element-binding protein 3, leucine zipper protein, transcription factor LZIP-alpha

**Official Symbol:** CREB3

**Accession Number(s):** NP\_006359.3

**Human GeneID(s):** [10488](#)

### Immunogen

Peptide with sequence C-HHDHTYSLPRET, from the internal region of the protein sequence according to NP\_006359.3.

Please note the [peptide](#) is available for sale.

### Purification and Storage

Purified from goat serum by ammonium sulphate precipitation followed by antigen affinity chromatography using the immunizing peptide.

Supplied at 0.5 mg/ml in Tris saline, 0.02% sodium azide, pH7.3 with 0.5% bovine serum albumin.

Aliquot and store at -20°C. Minimize freezing and thawing.

### Applications Tested

**Peptide ELISA:** antibody detection limit dilution 1:128000.

**Western blot:** Approx 45kDa band observed in lysates of cell line HepG2 (calculated MW of 41.4kDa according to NP\_006359.3). Recommended concentration: 0.3-1µg/ml.

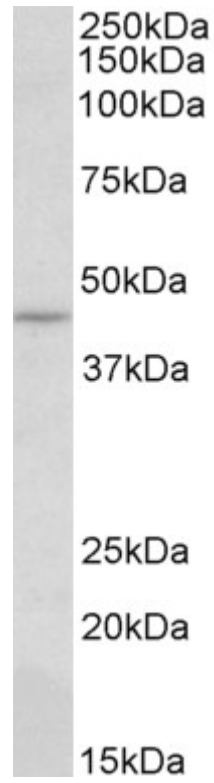
Primary incubation was 1 hour.

**IHC:** Paraffin embedded Human Skin. Recommended concentration: 5µg/ml.

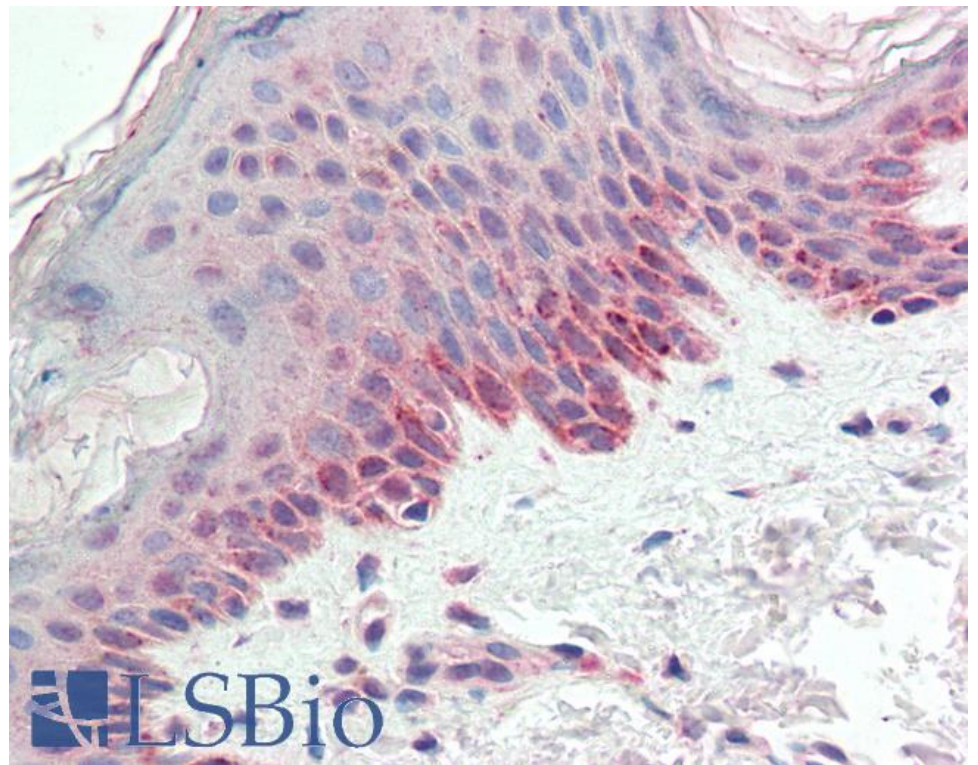
### Species Reactivity

**Tested:** Human

**Expected from sequence similarity:** Human



EB12173 (0.3 $\mu$ g/ml) staining of HepG2 lysate (35 $\mu$ g protein in RIPA buffer). Detected by chemiluminescence.



EB12173 (5 $\mu$ g/ml) staining of paraffin embedded Human Skin. Steamed antigen retrieval with citrate buffer pH 6, AP-staining.