



International Office

Everest Biotech Ltd

Vector Laboratories, Inc.
6737 Mowry Ave
Newark, CA 94560
United States

Customer Service:

customerservice@vectorlabs.com

Technical Service:

technical@vectorlabs.com

Tel: +1 (800) 227-6666

www.everestbiotech.com

**Research Use Only. Not for
diagnostic or therapeutic use.**

EB12174 - Goat Anti-CREB3L2 Antibody

Size: 100µg specific antibody in 200µl



Target Protein

Principal Names: CREB3L2, cAMP responsive element binding protein 3-like 2, BBF2H7, B-ZIB transcription factor, BBF2 human homolog on chromosome 7, FUS/BBF2H7 protein, TCAG_1951439, basic transcription factor 2, cAMP-responsive element-binding protein 3-like protein 2, cyclic AMP-responsive element-binding protein 3-like protein 2

Official Symbol: CREB3L2

Accession Number(s): NP_919047.2; NP_001240704.1

Human GeneID(s): [64764](#)

Important Comments: This antibody is expected to recognize both reported isoforms (NP_919047.2; NP_001240704.1).

Immunogen

Peptide with sequence DRKLSELPDGE-C, from the N Terminus of the protein sequence according to NP_919047.2; NP_001240704.1.

Please note the [peptide](#) is available for sale.

Purification and Storage

Purified from goat serum by ammonium sulphate precipitation followed by antigen affinity chromatography using the immunizing peptide.

Supplied at 0.5 mg/ml in Tris saline, 0.02% sodium azide, pH7.3 with 0.5% bovine serum albumin.

Aliquot and store at -20°C. Minimize freezing and thawing.

Applications Tested

Peptide ELISA: antibody detection limit dilution 1:128000.

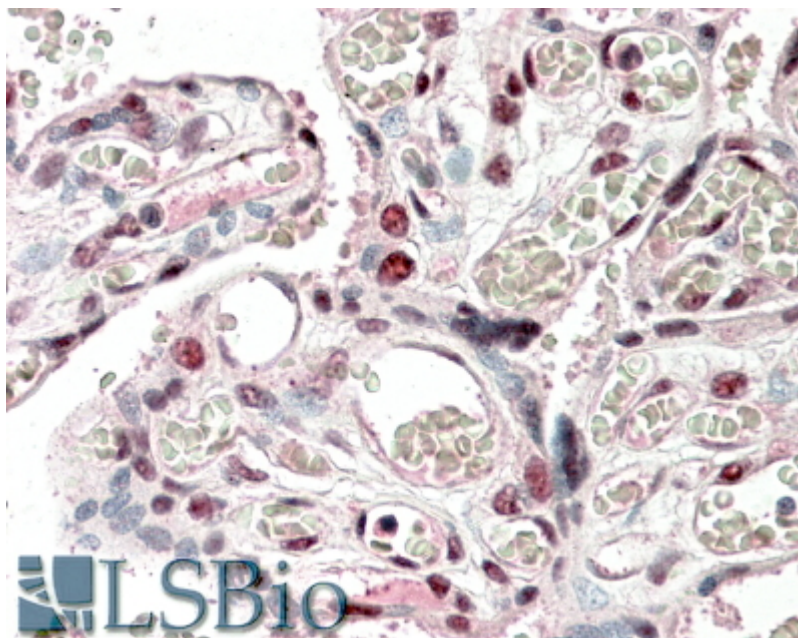
Western blot: Approx 26kDa band observed in Human Placenta lysates (calculated MW of 27.7kDa according to NP_001240704.1). Recommended concentration: 1-3µg/ml.

IHC: In paraffin embedded Human Placenta shows staining in select nuclei. Recommended concentration, 5-10µg/ml.

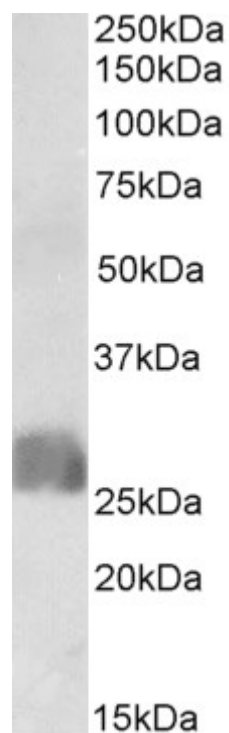
Species Reactivity

Tested: Human

Expected from sequence similarity: Human



EB12174 (5µg/ml) staining of paraffin embedded Human Placenta. Steamed antigen retrieval with citrate buffer pH 6, AP-staining.



EB12174 (1µg/ml) staining of Human Placenta lysate (35µg protein in RIPA buffer). Primary incubation was 1 hour. Detected by chemiluminescence.