



## UK Office

### Everest Biotech Ltd

Cherwell Innovation Centre  
77 Heyford Park  
Upper Heyford  
Oxfordshire  
OX25 5HD  
UK

Enquiries:

[info@everestbiotech.com](mailto:info@everestbiotech.com)

Sales:

[sales@everestbiotech.com](mailto:sales@everestbiotech.com)

Tech support:

[support@everestbiotech.com](mailto:support@everestbiotech.com)

Tel: +44 (0)1869 238326

[www.everestbiotech.com](http://www.everestbiotech.com)

**Research Use Only. Not for  
diagnostic or therapeutic use.**

## EB08035 - Goat Anti-CRHR1 / CRF-R (aa 107 - 117) Antibody

Size: 100µg specific antibody in 200µl



### Target Protein

**Principal Names:** CRHR1, CRF-R, corticotropin releasing hormone receptor 1, CRF1, CRFR1, CRH-R1h, CRHR, CRHR1f, corticotropin releasing hormone receptor variant 1h, seven transmembrane helix receptor

**Official Symbol:** CRHR1

**Accession Number(s):** NP\_004373.2

**Human GeneID(s):** [1394](#)

**Non-Human GeneID(s):** 12921 (mouse), 58959 (rat)

### Immunogen

Peptide with sequence C-NEEKKSKVHYH, from the internal region of the protein sequence according to NP\_004373.2.

Please note the [peptide](#) is available for sale.

### Purification and Storage

Purified from goat serum by ammonium sulphate precipitation followed by antigen affinity chromatography using the immunizing peptide.

Supplied at 0.5 mg/ml in Tris saline, 0.02% sodium azide, pH7.3 with 0.5% bovine serum albumin.

Aliquot and store at -20°C. Minimize freezing and thawing.

### Applications Tested

**Peptide ELISA:** antibody detection limit dilution 1:32000.

**Western blot:** Approx. 55kDa band observed in Human Duodenum lysates and in preliminary testing of Human Ovary lysate (calculated MW of 47.7kDa according to NP\_004373.2). This molecular weight is observed by other commercial sources, and was blocked by incubation with the immunizing peptide. A band at 48kDa was also observed in preliminary testing of Rat Testes lysate. Recommended concentration: 2-3µg/ml. Primary incubation 1 hour at room temperature.

### Species Reactivity

**Tested:** Human

**Expected from sequence similarity:** Human, Mouse, Rat

### Specific References

**This antibody (previous batch) has been successfully used in IHC on Mouse:**

Cassandra L. Kooiker, Yuncai Chen, Matthew T. Birnie, and Tallie Z. Baram  
Genetic Tagging Uncovers a Robust, Selective Activation of the Thalamic Paraventricular Nucleus by Adverse Experiences Early in Life.

Biol Psychiatry Glob Open Sci. 2023 Jan 24;3(4):746-755.

PMID: 37881549

**This antibody (previous batch) has been successfully used in ICC on Mouse:**

Silvia Cursano, Chiara R. Battaglia, Carolina Urrutia-Ruiz, Stefanie Grabrucker, Michael Schön, Jürgen Bockmann, Sonja Braumüller, Peter Radermacher, Francesco Roselli, Markus Huber-Lang, and Tobias M. Boeckers

A CRHR1 antagonist prevents synaptic loss and memory deficits in a trauma-induced delirium-like syndrome.

Mol Psychiatry. 2021; 26(8): 3778-3794.

PMID: 32051550

**This antibody (previous batch) has been successfully used in ICC on Rat:**

Xie Z, Penzes P, Srivastava DP

Exchange protein directly activated by cAMP 2 is required for corticotropin-releasing hormone-mediated spine loss in rat hippocampus.  
Eur J Neurosci. 2019 Jun 14.

PMID: 31199033

**This antibody (previous batch) has been successfully used in ICC/IF on Rat:**

Zhong Xie, Peter Penzes, Deepak P. Srivastava

EPAC2 is required for corticotropin-releasing hormone-mediated spine loss

April 2019: doi: <https://doi.org/10.1101/607598>

PMID: 0

**This antibody (previous batch) has been successfully used in Western blot on Mouse:**

Baglietto-Vargas D, Chen Y, Suh D, Ager RR, Rodriguez-Ortiz CJ, Medeiros R, Myczek K, Green KN, Baram TZ, LaFerla FM.

Short-term modern life-like stress exacerbates A $\beta$ -pathology and synapse loss in 3xTg-AD mice.

J Neurochem. 2015 Sep;134(5):915-26.

PMID: 26077803

**This antibody (previous batch) has been successfully used in Western blot on Mouse:**

Weerachayaphorn J, Mennone A, Soroka CJ, Harry K, Hagey LR, Kensler TW, Boyer JL.

Nuclear factor-E2-related factor 2 is a major determinant of bile acid homeostasis in the liver and intestine.

Am J Physiol Gastrointest Liver Physiol. 2012 May 1;302(9):G925-36.

PMID: 22345550

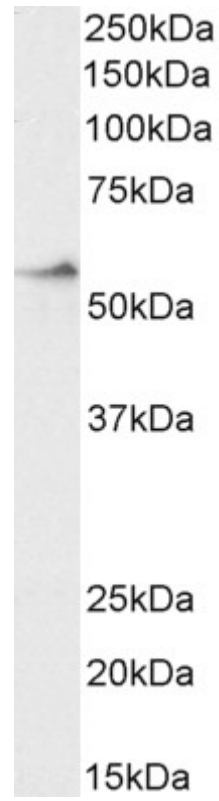
**This antibody (previous batch) has been successfully used in IHC on Mouse:**

Jüngling K, Liu X, Lesting J, Coulon P, Sosulina L, Reinscheid RK, Pape HC.

Activation of neuropeptide S expressing neurons in the locus coeruleus by corticotropin-releasing factor.

J Physiol. 2012 May 8.

PMID: 22570383



EB08035 (2 $\mu$ g/ml) staining of Human Duodenum lysate (35 $\mu$ g protein in RIPA buffer). Detected by chemiluminescence.