



UK Office

Everest Biotech Ltd

Cherwell Innovation Centre
77 Heyford Park
Upper Heyford
Oxfordshire
OX25 5HD
UK

Enquiries:

info@everestbiotech.com

Sales:

sales@everestbiotech.com

Tech support:

support@everestbiotech.com

Tel: +44 (0)1869 238326

Fax: +44 (0)1869 238327

US Office

Everest Biotech c/o Abcore

405 Maple Street, Suite A106
Ramona,
CA 92065
USA

Inquiries:

info@everestbiotech.com

Sales:

usasales@everestbiotech.com

Tech support:

support@everestbiotech.com

Tel: 888-320-4628 (toll-free)

Fax: 888-841-9041

www.everestbiotech.com

**Research Use Only. Not for
diagnostic or therapeutic use.**

EB08035 - Goat Anti-CRHR1 / CRF-R (aa 107 - 117) Antibody

Size: 100µg specific antibody in 200µl



Target Protein

Principal Names: CRHR1, CRF-R, corticotropin releasing hormone receptor 1, CRF1, CRFR1, CRH-R1h, CRHR, CRHR1f, corticotropin releasing hormone receptor variant 1h, seven transmembrane helix receptor

Official Symbol: CRHR1

Accession Number(s): NP_004373.2

Human GeneID(s): [1394](#)

Non-Human GeneID(s): 12921 (mouse), 58959 (rat)

Immunogen

Peptide with sequence C-NEEKKSQVHYH, from the internal region of the protein sequence according to NP_004373.2.

Please note the [peptide](#) is available for sale.

Purification and Storage

Purified from goat serum by ammonium sulphate precipitation followed by antigen affinity chromatography using the immunizing peptide.

Supplied at 0.5 mg/ml in Tris saline, 0.02% sodium azide, pH7.3 with 0.5% bovine serum albumin.

Aliquot and store at -20°C. Minimize freezing and thawing.

Applications Tested

Peptide ELISA: antibody detection limit dilution 1:128000.

Western blot: Approx 60kDa band observed in Human Brain (Cerebellum), Colon, Rat Brain and Mouse spinal cord lysates (calculated MW of 47.7kDa according to NP_004373.2). The observed molecular weight corresponds to earlier findings in literature with different antibodies (Xu et al, Mol Pharmacol. 2001 Mar;59(3):485-92; PMID: 11179443) . Recommended concentration: 0.1-0.3µg/ml. Primary incubation was 1 hour.

Immunofluorescence: Expression of the protein seen in the membranes, vesicles and cytoplasm of MCF7 and Neuro2a cells. Recommended concentration: 10µg/ml.

Species Reactivity

Tested: Human, Mouse, Rat

Expected from sequence similarity: Human, Mouse, Rat

Specific References

This antibody has been successfully used in IHC on Mouse:

Cassandra L. Kooiker, Yuncai Chen, Matthew T. Birnie, and Tallie Z. Baram
Genetic Tagging Uncovers a Robust, Selective Activation of the Thalamic Paraventricular Nucleus by Adverse Experiences Early in Life.

Biol Psychiatry Glob Open Sci. 2023 Jan 24;3(4):746-755.

PMID: 37881549

This antibody has been successfully used in ICC on Mouse:

Silvia Cursano, Chiara R. Battaglia, Carolina Urrutia-Ruiz, Stefanie Grabrucker, Michael Schön, Jürgen Bockmann, Sonja Braumüller, Peter Radermacher, Francesco Roselli, Markus Huber-Lang, and Tobias M. Boeckers

A CRHR1 antagonist prevents synaptic loss and memory deficits in a trauma-induced

delirium-like syndrome.

Mol Psychiatry. 2021; 26(8): 3778-3794.

PMID: 32051550

This antibody has been successfully used in ICC on Rat:

Xie Z, Penzes P, Srivastava DP

Exchange protein directly activated by cAMP 2 is required for corticotropin-releasing hormone-mediated

Eur J Neurosci. 2019 Jun 14.

PMID: 31199033

This antibody has been successfully used in ICC/IF on Rat:

Zhong Xie, Peter Penzes, Deepak P. Srivastava

EPAC2 is required for corticotropin-releasing hormone-mediated spine loss

April 2019: doi: <https://doi.org/10.1101/607598>

PMID: 0

This antibody has been successfully used in Western blot on Mouse:

Baglietto-Vargas D, Chen Y, Suh D, Ager RR, Rodriguez-Ortiz CJ, Medeiros R, Myczek

K, Green KN, Baram TZ, LaFerla FM.

Short-term modern life-like stress exacerbates A β -pathology and synapse loss in 3xTg-AD mice.

J Neurochem. 2015 Sep;134(5):915-26.

PMID: 26077803

This antibody has been successfully used in Western blot on Mouse:

Weerachayaphorn J, Mennone A, Soroka CJ, Harry K, Hagey LR, Kensler TW, Boyer JL.

Nuclear factor-E2-related factor 2 is a major determinant of bile acid homeostasis in the liver and intestine.

Am J Physiol Gastrointest Liver Physiol. 2012 May 1;302(9):G925-36.

PMID: 22345550

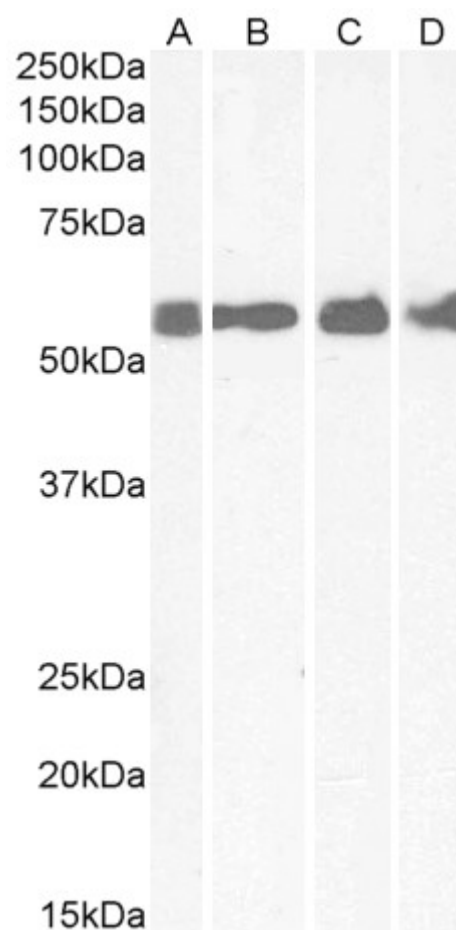
This antibody has been successfully used in IHC on Mouse:

Jüngling K, Liu X, Lesting J, Coulon P, Sosulina L, Reinscheid RK, Pape HC.

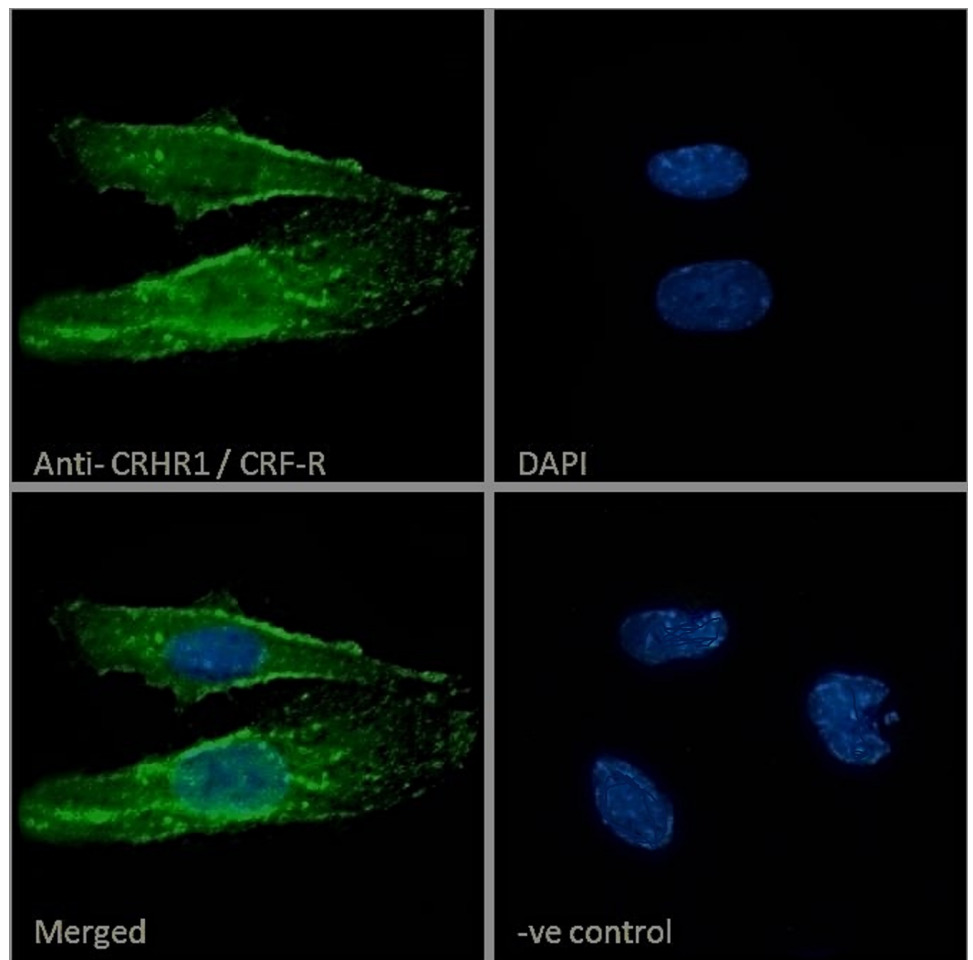
Activation of neuropeptide S expressing neurons in the locus coeruleus by corticotropin-releasing factor.

J Physiol. 2012 May 8.

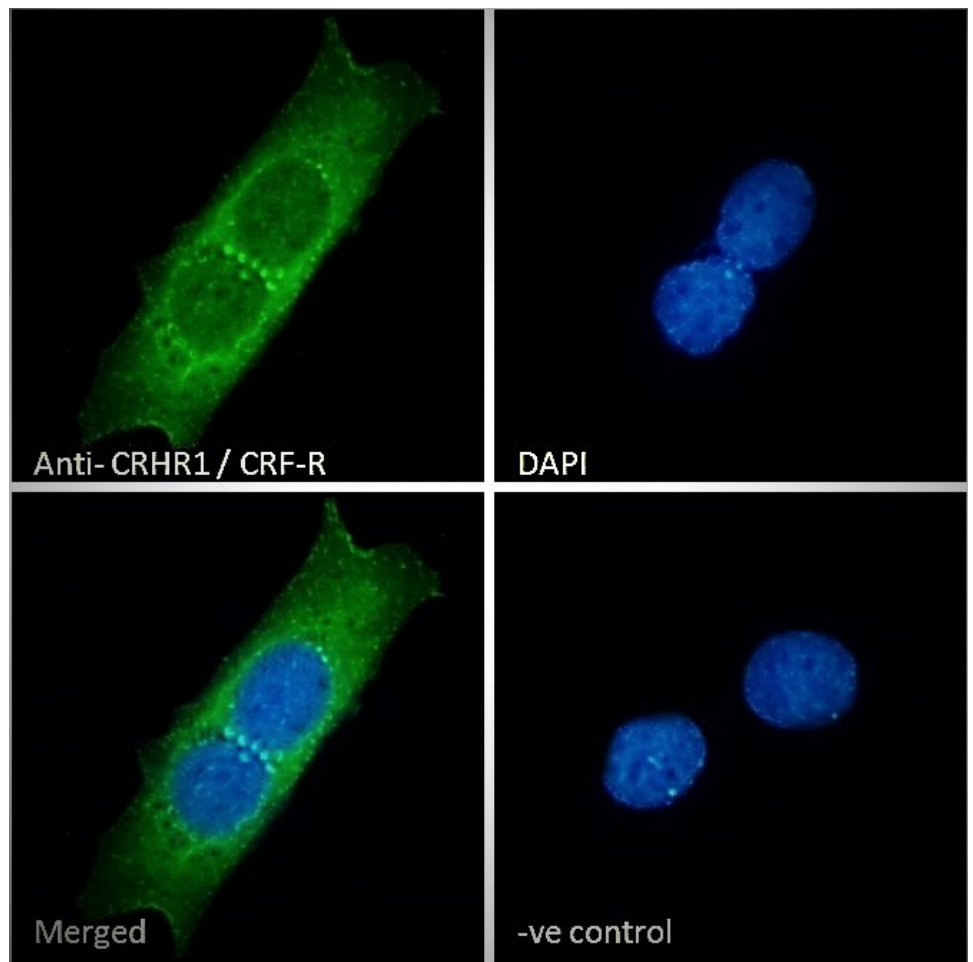
PMID: 22570383



EB08035 (1 µg/ml) staining of Human Colon (A), Cerebellum (B), Rat Brain (C) and Mouse spinal Cord (D) lysates (35 µg protein in RIPA buffer). Detected by chemiluminescence.



EB08035 Immunofluorescence analysis of paraformaldehyde fixed Neuro2a cells, permeabilized with 0.15% Triton. Primary incubation 1hr (10ug/ml) followed by Alexa Fluor 488 secondary antibody (2ug/ml), showing plasma membrane, and vesicle staining. The nuclear stain is DAPI (blue). Negative control: Unimmunized goat IgG (10ug/ml) followed by Alexa Fluor 488 secondary antibody (2ug/ml).



EB08035 Immunofluorescence analysis of paraformaldehyde fixed MCF7 cells, permeabilized with 0.15% Triton. Primary incubation 1hr (10ug/ml) followed by Alexa Fluor 488 secondary antibody (2ug/ml), showing cytoplasmic and vesicle staining. The nuclear stain is DAPI (blue). Negative control: Unimmunized goat IgG (10ug/ml) followed by Alexa Fluor 488 secondary antibody (2ug/ml).