

## UK Office

### Everest Biotech Ltd

Cherwell Innovation Centre  
77 Heyford Park  
Upper Heyford  
Oxfordshire  
OX25 5HD  
UK

Enquiries:

[info@everestbiotech.com](mailto:info@everestbiotech.com)

Sales:

[sales@everestbiotech.com](mailto:sales@everestbiotech.com)

Tech support:

[support@everestbiotech.com](mailto:support@everestbiotech.com)

Tel: +44 (0)1869 238326

[www.everestbiotech.com](http://www.everestbiotech.com)

**Research Use Only. Not for  
diagnostic or therapeutic use.**

## EB07553 - Goat Anti-CRHR1 / CRF-R (aa 250 - 263) Antibody

Size: 100µg specific antibody in 200µl



### Target Protein

**Principal Names:** CRHR1, CRF-R, corticotropin releasing hormone receptor 1, CRF1, CRFR1, CRH-R1h, CRHR, CRHR1f, corticotropin releasing hormone receptor variant 1h, seven transmembrane helix receptor

**Official Symbol:** CRHR1

**Accession Number(s):** NP\_004373.2

**Human GeneID(s):** [1394](#)

**Non-Human GeneID(s):** 12921 (mouse), 58959 (rat)

### Immunogen

Peptide with sequence KLYYDNEKCWFGKR, from the internal region of the protein sequence according to NP\_004373.2.

Please note the [peptide](#) is available for sale.

### Purification and Storage

Purified from goat serum by ammonium sulphate precipitation followed by antigen affinity chromatography using the immunizing peptide.

Supplied at 0.5 mg/ml in Tris saline, 0.02% sodium azide, pH7.3 with 0.5% bovine serum albumin.

Aliquot and store at -20°C. Minimize freezing and thawing.

### Applications Tested

**Peptide ELISA:** antibody detection limit dilution 1:1000.

**Western blot:** This antibody has been successfully used in WB on Mouse: Hunt AJ Jr et al, Brain Struct Funct. 2018 Jul;223(6):2685-2698. PMID: 29569009.

**IHC:** Paraffin embedded Human Brain (Cortex). Recommended concentration: 5µg/ml.

**Immunofluorescence:** Expression of the protein seen in the cytoplasm and vesicles of MCF7 cells. Recommended concentration: 10µg/ml.

### Species Reactivity

**Tested:** Human, Mouse

**Expected from sequence similarity:** Human, Mouse, Rat, Dog, Cow, Sheep

### Specific References

**This antibody has been successfully used on Rat:**

Ying Chen , Yan Zhao, Dan-ni Luo , Hui Zheng , Ying Li , and Si-yuan Zhou  
Electroacupuncture Regulates Disorders of Gut-Brain Interaction by Decreasing  
Corticotropin-Releasing Factor in a Rat Model of IBS  
Gastroenterology Research and Practice Volume 2019, Article ID 1759842  
PMID: 31737064

**This antibody has been successfully used in Western blot on Mouse:**

Hunt AJ Jr, Dasgupta R, Rajamanickam S, Jiang Z, Beierlein M, Chan CS, Justice NJ  
Paraventricular hypothalamic and amygdalar CRF neurons synapse in the external globus  
pallidus.  
Brain Struct Funct. 2018 Jul;223(6):2685-2698.  
PMID: 29569009

**This antibody (previous batch) has been successfully used in IF on Mouse:**

Jiang Z, Rajamanickam S, Justice NJ.

Local Corticotropin-Releasing Factor Signaling in the Hypothalamic Paraventricular Nucleus.

J Neurosci. 2018 Feb 21;38(8):1874-1890.

PMID: 29352046

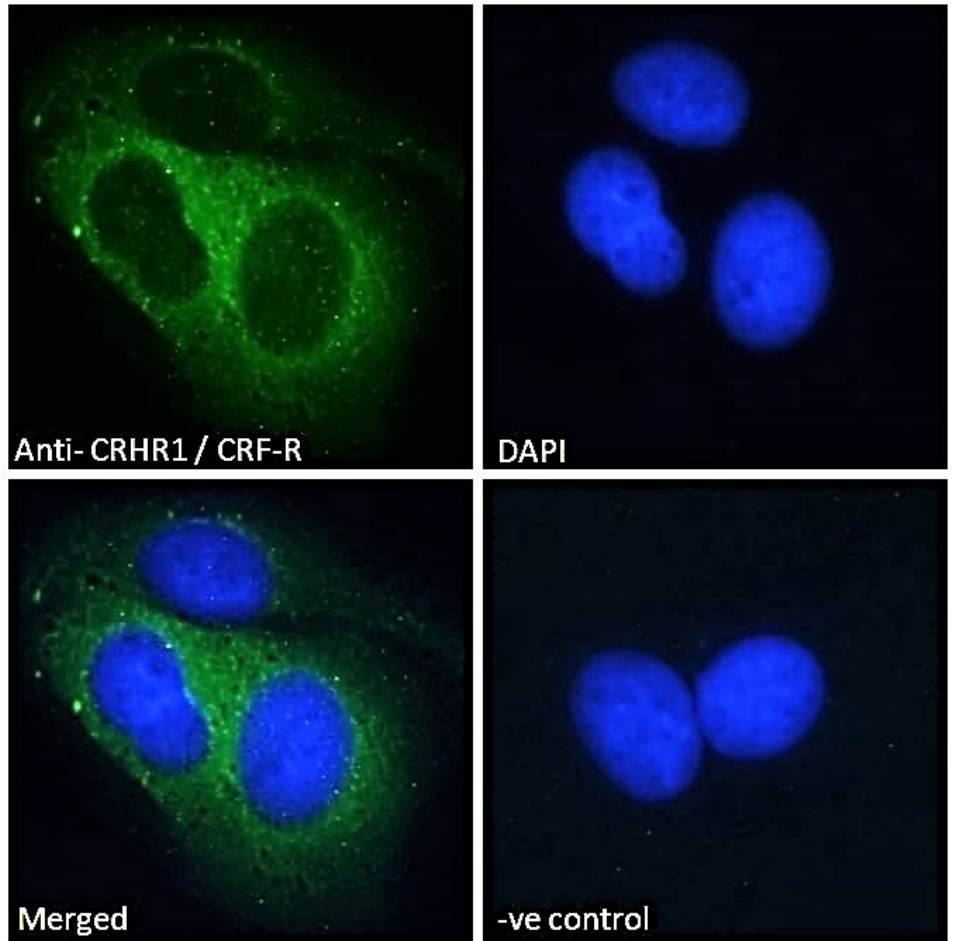
**This antibody (previous batch) has been successfully used in ICC on Rat:**

Adrienne L. Andres, Limor Regev, Lucas Phi, Ronald R. Seese, Yuncai Chen, Christine M. Gall and Tallie Z. Baram

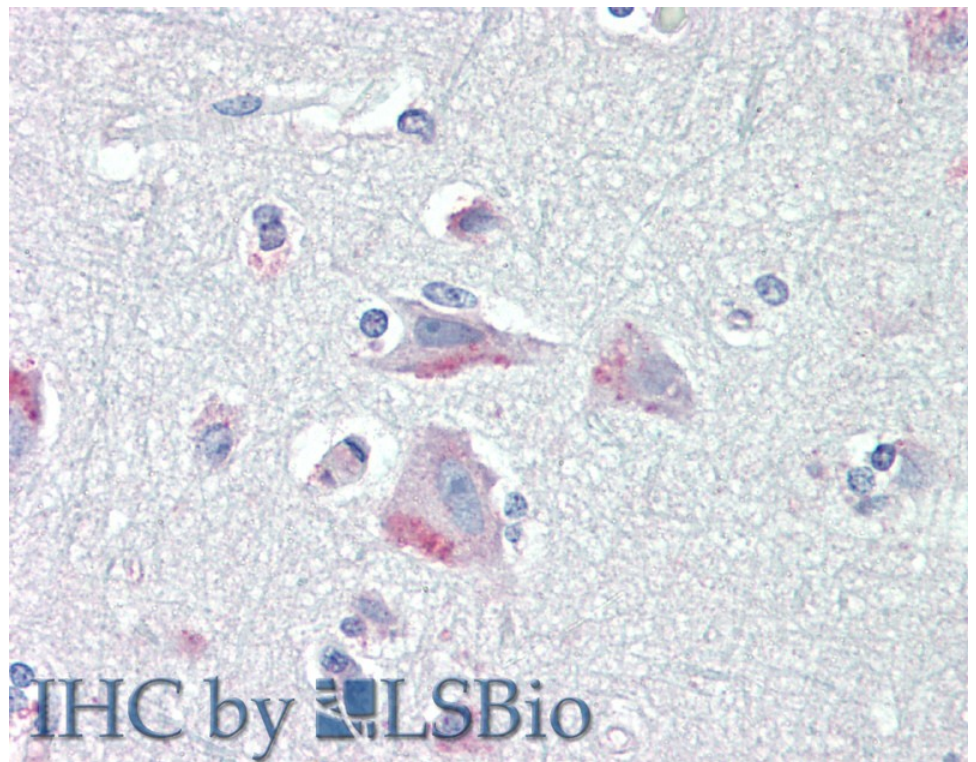
NMDA Receptor Activation and Calpain Contribute to Disruption of Dendritic Spines by the Stress Neuropeptide CRH

J Neurosci. 2013 Oct 23;33(43):16945-60.

PMID: 24155300



EB07553 Immunofluorescence analysis of paraformaldehyde fixed MCF7 cells, permeabilized with 0.15% Triton. Primary incubation 1hr (10ug/ml) followed by Alexa Fluor 488 secondary antibody (2ug/ml), showing cytoplasmic and vesicle staining. The nuclear stain is DAPI (blue). Negative control: Unimmunized goat IgG (10ug/ml) followed by Alexa Fluor 488 secondary antibody (2ug/ml).



IHC by  LSBio

EB07553 (5µg/ml) staining of paraffin embedded Human Cortex. Steamed antigen retrieval with citrate buffer pH 6, AP-staining.