



UK Office

Everest Biotech Ltd

Cherwell Innovation Centre
77 Heyford Park
Upper Heyford
Oxfordshire
OX25 5HD
UK

Enquiries:

info@everestbiotech.com

Sales:

sales@everestbiotech.com

Tech support:

support@everestbiotech.com

Tel: +44 (0)1869 238326

Fax: +44 (0)1869 238327

US Office

Everest Biotech c/o Abcore

405 Maple Street, Suite A106
Ramona,
CA 92065
USA

Inquiries:

info@everestbiotech.com

Sales:

usasales@everestbiotech.com

Tech support:

support@everestbiotech.com

Tel: 888-320-4628 (toll-free)

Fax: 888-841-9041

www.everestbiotech.com

**Research Use Only. Not for
diagnostic or therapeutic use.**

EB05254-T - Goat Anti-CRKL Antibody - Trial

Size: 20µg specific antibody in 40µl



Target Protein

Principal Names: CRKL, v-crk sarcoma virus CT10 oncogene homolog (avian)-like, v-crk avian sarcoma virus CT10 oncogene homolog-like, OTTHUMP00000198539

Official Symbol: CRKL

Accession Number(s): NP_005198.1

Human GeneID(s): [1399](#)

Immunogen

Peptide with sequence C-KIFDPQNPDENE, from the C Terminus of the protein sequence according to NP_005198.1.

Please note the [peptide](#) is available for sale.

Purification and Storage

Purified from goat serum by ammonium sulphate precipitation followed by antigen affinity chromatography using the immunizing peptide.

Supplied at 0.5 mg/ml in Tris saline, 0.02% sodium azide, pH7.3 with 0.5% bovine serum albumin.

Aliquot and store at -20°C. Minimize freezing and thawing.

Applications Tested

Peptide ELISA: antibody detection limit dilution 1:16000.

Western blot: Approx 37kDa band observed in lysates of cell lines K562, Daudi and NIH3T3 (calculated MW of 33.8kDa according to Human NP_005198.1 and Mouse NP_031790.2). Recommended concentration: 0.1-1µg/ml. Primary incubation 1 hour at room temperature.

IHC: In paraffin embedded Human Thymus shows staining of cellular membranes in thymocytes. Recommended concentration: 2.5-3.8µg/ml.

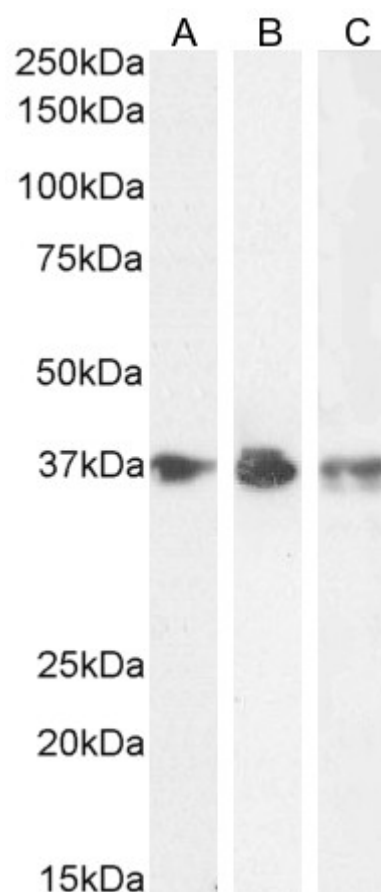
Immunofluorescence: Strong expression of the protein seen in the cytoplasm of U2OS cells. Recommended concentration: 10µg/ml.

Flow Cytometry: Flow cytometric analysis of U2OS cells. Recommended concentration: 10ug/ml.

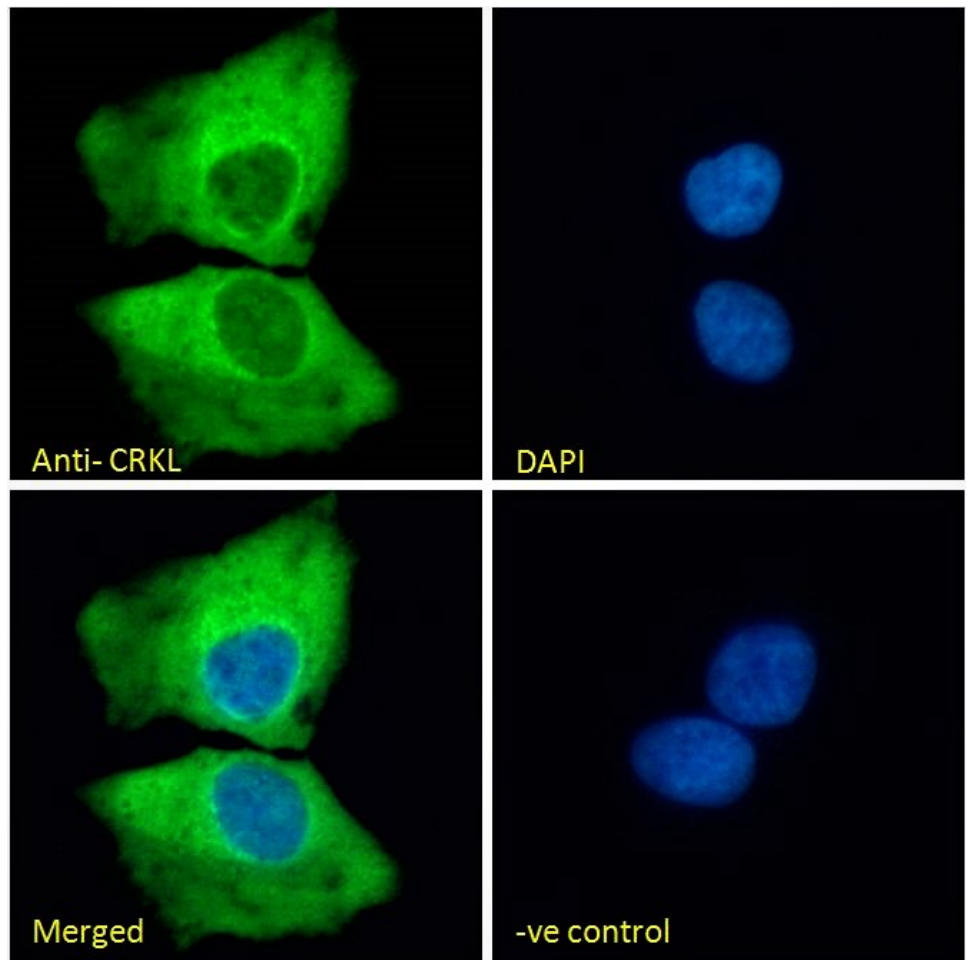
Species Reactivity

Tested: Human, Mouse

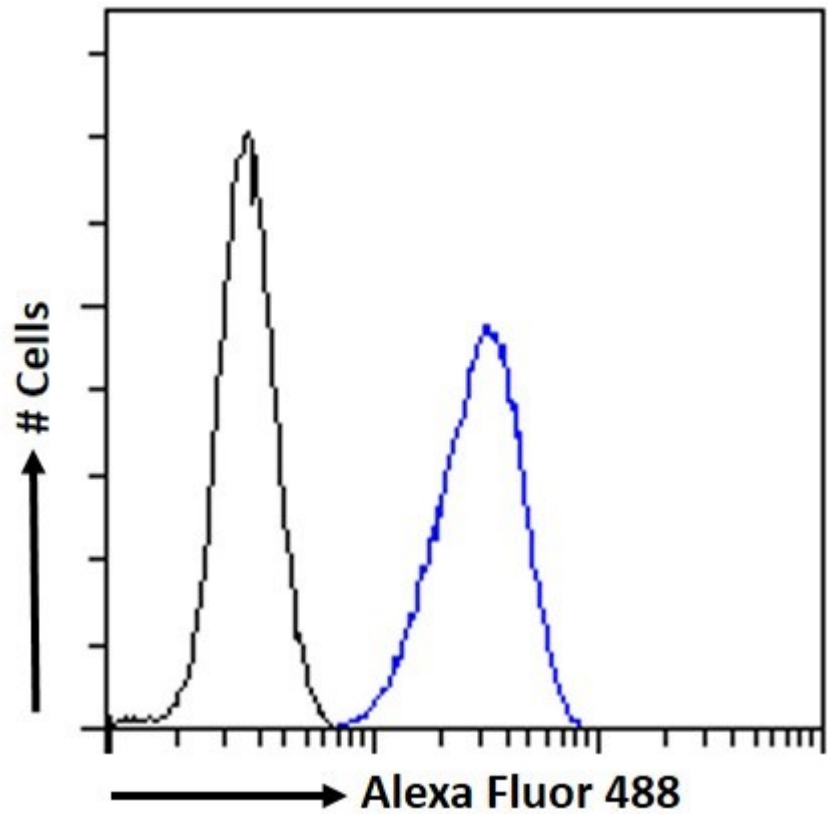
Expected from sequence similarity: Human, Mouse, Rat



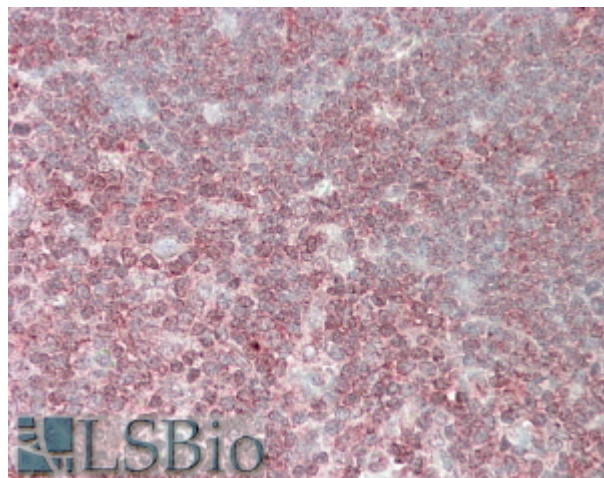
EB05254 (0.1 μ g/ml) staining of K562 (A) and (1 μ g/ml) Daudi (B) and NIH3T3 (C) cell lysate (35 μ g protein in RIPA buffer). Detected by chemiluminescence.



EB05254 Immunofluorescence analysis of paraformaldehyde fixed U2OS cells, permeabilized with 0.15% Triton. Primary incubation 1hr (10ug/ml) followed by Alexa Fluor 488 secondary antibody (2ug/ml), showing cytoplasmic staining. The nuclear stain is DAPI (blue). Negative control: Unimmunized goat IgG (10ug/ml) followed by Alexa Fluor 488 secondary antibody (2ug/ml).



EB05254 Flow cytometric analysis of paraformaldehyde fixed U2OS cells (blue line), permeabilized with 0.5% Triton. Primary incubation 1hr (10ug/ml) followed by Alexa Fluor 488 secondary antibody (1ug/ml). IgG control: Unimmunized goat IgG (black line) followed by Alexa Fluor 488 secondary antibody.



EB05254 (3.8µg/ml) staining of paraffin embedded Human Thymus. Steamed antigen retrieval with citrate buffer pH 6, AP-staining.