



## UK Office

### Everest Biotech Ltd

Cherwell Innovation Centre  
77 Heyford Park  
Upper Heyford  
Oxfordshire  
OX25 5HD  
UK

Enquiries:

[info@everestbiotech.com](mailto:info@everestbiotech.com)

Sales:

[sales@everestbiotech.com](mailto:sales@everestbiotech.com)

Tech support:

[support@everestbiotech.com](mailto:support@everestbiotech.com)

Tel: +44 (0)1869 238326

[www.everestbiotech.com](http://www.everestbiotech.com)

**Research Use Only. Not for  
diagnostic or therapeutic use.**

## EB10729 - Goat Anti-Crot (rat) Antibody

Size: 100µg specific antibody in 200µl



### Target Protein

**Principal Names:** Crot, carnitine O-octanoyltransferase, COT, peroxisomal carnitine O-octanoyltransferase

**Official Symbol:** Crot

**Accession Number(s):** NP\_114193.1

**Non-Human GeneID(s):** 83842 (rat)

### Immunogen

Peptide with sequence RSCLETDAEKLVE, from the C Terminus of the protein sequence according to NP\_114193.1.

Please note the [peptide](#) is available for sale.

### Purification and Storage

Purified from goat serum by ammonium sulphate precipitation followed by antigen affinity chromatography using the immunizing peptide.

Supplied at 0.5 mg/ml in Tris saline, 0.02% sodium azide, pH7.3 with 0.5% bovine serum albumin.

Aliquot and store at -20°C. Minimize freezing and thawing.

### Applications Tested

**Peptide ELISA:** antibody detection limit dilution 1:32000.

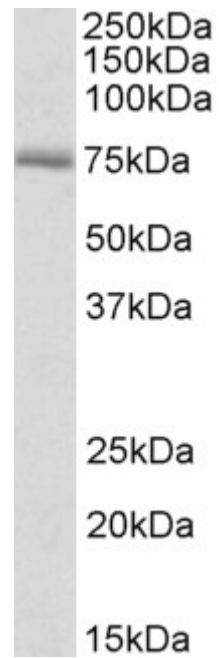
**Western blot:** Approx 75kDa band observed in Rat Kidney lysates (calculated MW of 70.3kDa according to NP\_114193.1). Recommended concentration: 0.3-1µg/ml. Primary incubation was 1 hour.

**IHC:** Paraffin embedded Human Brain (Cortex) and Liver. Recommended concentration: 5µg/ml.

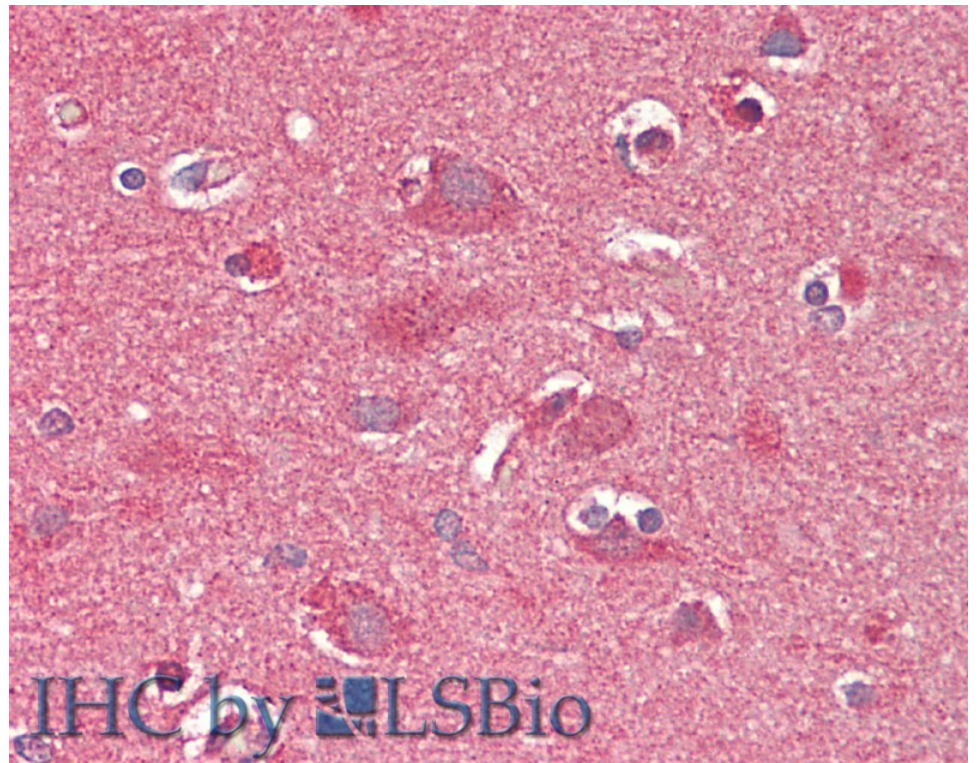
### Species Reactivity

**Tested:** Human, Rat

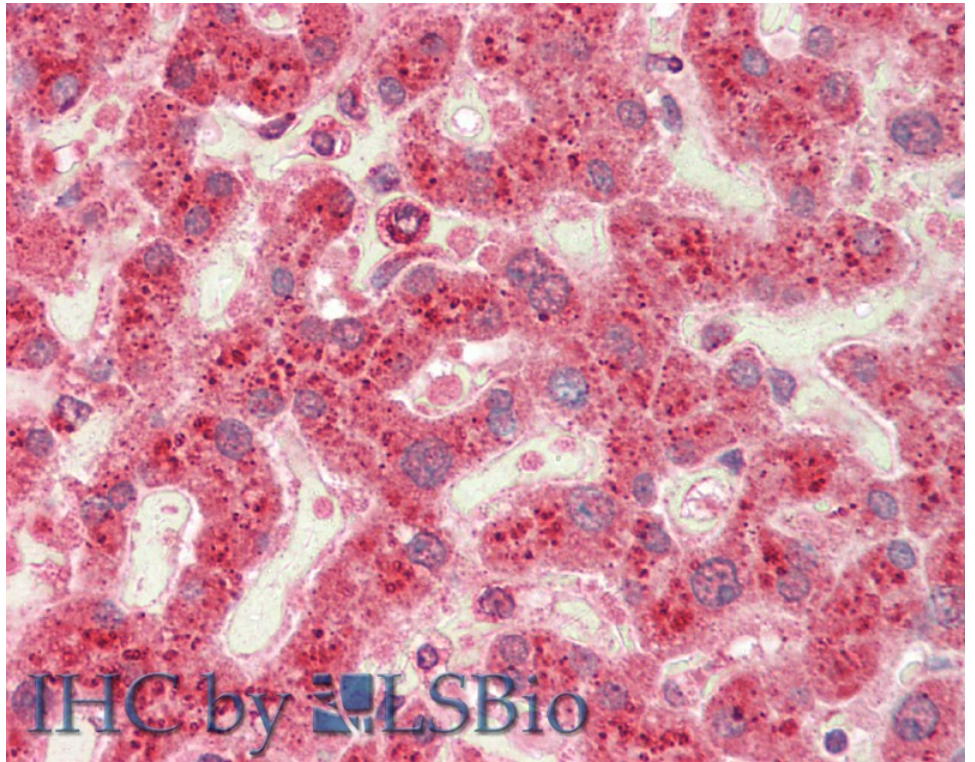
**Expected from sequence similarity:** Rat



EB10729 (0.3µg/ml) staining of Rat Kidney lysate (35µg protein in RIPA buffer). Detected by chemiluminescence.



EB10729 (5µg/ml) staining of paraffin embedded Human Cortex. Steamed antigen retrieval with citrate buffer pH 6, AP-staining.



EB10729 (5µg/ml) staining of paraffin embedded Human Liver. Steamed antigen retrieval with citrate buffer pH 6, AP-staining.