



UK Office

Everest Biotech Ltd

Cherwell Innovation Centre
77 Heyford Park
Upper Heyford
Oxfordshire
OX25 5HD
UK

Enquiries:

info@everestbiotech.com

Sales:

sales@everestbiotech.com

Tech support:

support@everestbiotech.com

Tel: +44 (0)1869 238326

Fax: +44 (0)1869 238327

US Office

Everest Biotech c/o Abcore

405 Maple Street, Suite A106
Ramona,
CA 92065
USA

Inquiries:

info@everestbiotech.com

Sales:

usasales@everestbiotech.com

Tech support:

support@everestbiotech.com

Tel: 888-320-4628 (toll-free)

Fax: 888-841-9041

www.everestbiotech.com

**Research Use Only. Not for
diagnostic or therapeutic use.**

EB08182 - Goat Anti-CRP2 / CSRP2 Antibody

Size: 100µg specific antibody in 200µl



Target Protein

Principal Names: CRP2, CSRP2, cysteine and glycine-rich protein 2, LMO5, SmLIM, LIM domain only 5, smooth muscle

Official Symbol: CSRP2

Accession Number(s): NP_001312.1

Human GeneID(s): [1466](#)

Non-Human GeneID(s): 13008 (mouse)

Immunogen

Peptide with sequence C-ERLGIKPESVQP, from the internal region of the protein sequence according to NP_001312.1.

Please note the [peptide](#) is available for sale.

Purification and Storage

Purified from goat serum by ammonium sulphate precipitation followed by antigen affinity chromatography using the immunizing peptide.

Supplied at 0.5 mg/ml in Tris saline, 0.02% sodium azide, pH7.3 with 0.5% bovine serum albumin.

Aliquot and store at -20°C. Minimize freezing and thawing.

Applications Tested

Peptide ELISA: antibody detection limit dilution 1:64000.

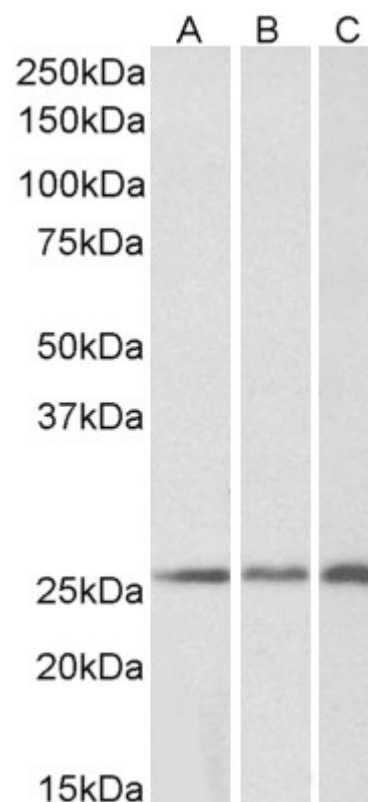
Western blot: Approx 26kDa band observed in Human, Mouse and Rat Kidney lysates (calculated MW of 21.0kDa according to NP_001312.1). The observed molecular weight corresponds to earlier findings in literature with different antibodies (Huber et al, J Biol Chem. 2000 Feb 25;275(8):5504-11; PMID: 10681529). In transfected HEK293 transiently expressing CRP2 a band of approx. 26kDa is observed. This band is not observed in the non-transfected HEK293. Recommended concentration: 0.1-0.3µg/ml. Primary incubation was 1 hour.

IHC: In paraffin embedded Human Lung shows staining of the endothelial cells of a blood vessel. Recommended concentration: 3-6µg/ml.

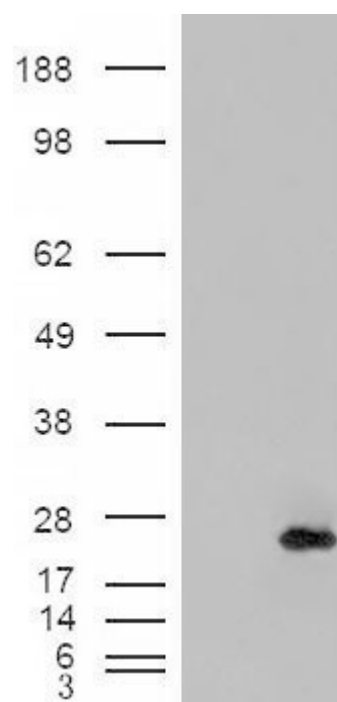
Species Reactivity

Tested: Human, Mouse, Rat

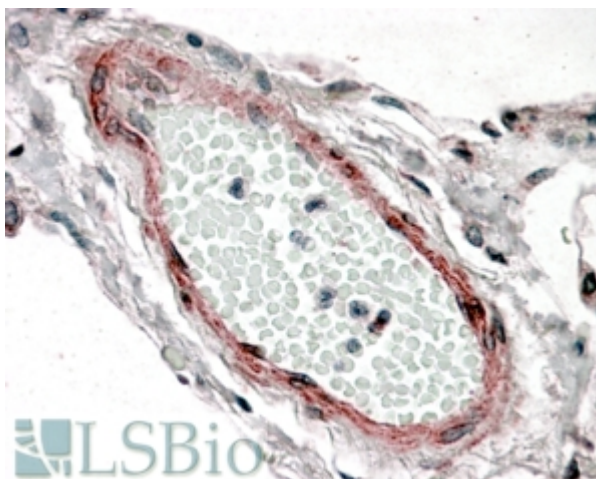
Expected from sequence similarity: Human, Mouse, Rat, Horse



EB08182 (0.2µg/ml) staining of Human (A), Mouse (B) and Rat (C) Kidney lysates (35µg protein in RIPA buffer).
Detected by chemiluminescence



HEK293 overexpressing CRP2 (RC201565) and probed with EB08182 (mock transfection in first lane), tested by
Origene.



EB08182 (3.8µg/ml) staining of paraffin embedded Human Lung. Steamed antigen retrieval with citrate buffer pH 6, AP-staining.