

## UK Office

### Everest Biotech Ltd

Cherwell Innovation Centre  
77 Heyford Park  
Upper Heyford  
Oxfordshire  
OX25 5HD  
UK

Enquiries:

[info@everestbiotech.com](mailto:info@everestbiotech.com)

Sales:

[sales@everestbiotech.com](mailto:sales@everestbiotech.com)

Tech support:

[support@everestbiotech.com](mailto:support@everestbiotech.com)

Tel: +44 (0)1869 238326

[www.everestbiotech.com](http://www.everestbiotech.com)

**Research Use Only. Not for  
diagnostic or therapeutic use.**

## EB10706 - Goat Anti-CRTC2 / TORC2 (aa 83-96) Antibody

Size: 100µg specific antibody in 200µl



### Target Protein

**Principal Names:** CRTC2, CREB regulated transcription coactivator 2, RP11-422P24.6, TORC2, CREB-regulated transcription coactivator 2, OTTHUMP00000035255, TORC-2, transducer of CREB protein 2, transducer of regulated cAMP response element-binding protein (CREB) 2

**Official Symbol:** CRTC2

**Accession Number(s):** NP\_859066.1

**Human GeneID(s):** [200186](#)

**Non-Human GeneID(s):** 74343 (mouse), 310615 (rat)

### Immunogen

Peptide with sequence C-EFQSPLHSPLDSSR, from the internal region of the protein sequence according to NP\_859066.1.

Please note the [peptide](#) is available for sale.

### Purification and Storage

Purified from goat serum by ammonium sulphate precipitation followed by antigen affinity chromatography using the immunizing peptide.

Supplied at 0.5 mg/ml in Tris saline, 0.02% sodium azide, pH7.3 with 0.5% bovine serum albumin.

Aliquot and store at -20°C. Minimize freezing and thawing.

### Applications Tested

**Peptide ELISA:** antibody detection limit dilution 1:32000.

**Western blot:** Approx 85kDa band observed in lysates of cell line Jurkat (calculated MW of 73.3kDa according to NP\_859066.1). Recommended concentration: 0.3-1µg/ml.

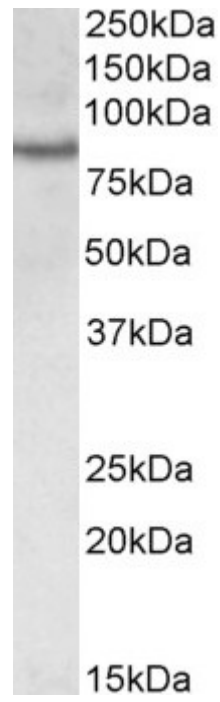
Primary incubation was 1 hour.

**IHC:** Paraffin embedded Human Thymus. Recommended concentration: 3.75µg/ml.

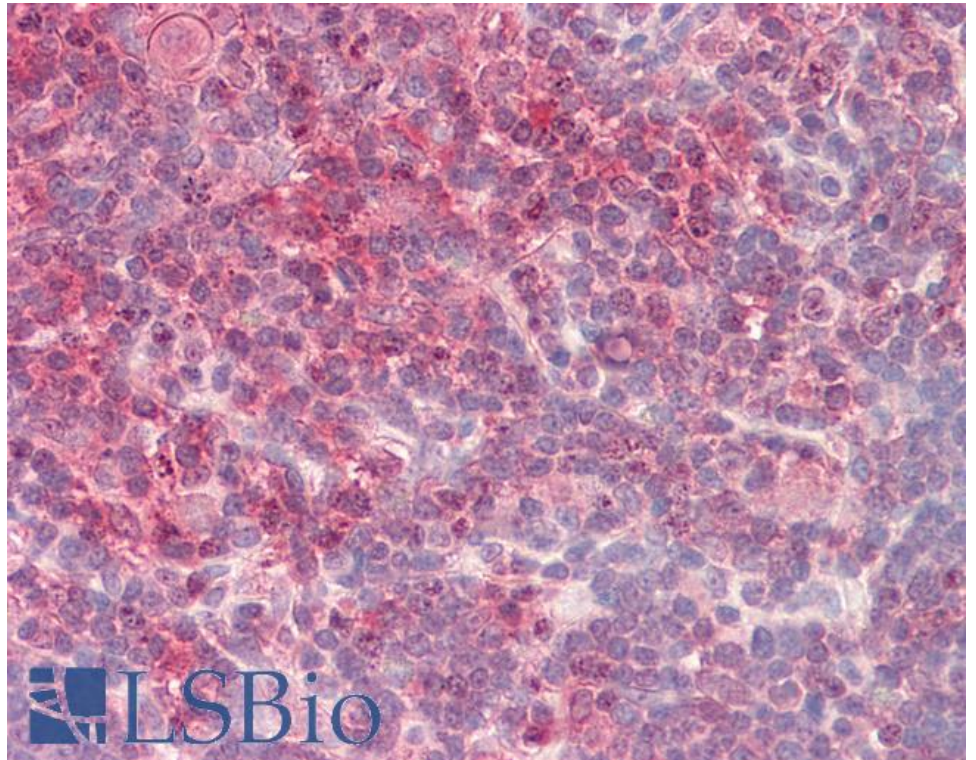
### Species Reactivity

**Tested:** Human

**Expected from sequence similarity:** Human, Mouse, Rat, Dog, Pig, Cow



EB10706 (0.3 $\mu$ g/ml) staining of Jurkat lysate (35 $\mu$ g protein in RIPA buffer). Detected by chemiluminescence.



EB10706 (3.75 $\mu$ g/ml) staining of paraffin embedded Human Thymus. Steamed antigen retrieval with citrate buffer Ph 6, AP-staining.