



UK Office

Everest Biotech Ltd

Cherwell Innovation Centre
77 Heyford Park
Upper Heyford
Oxfordshire
OX25 5HD
UK

Enquiries:

info@everestbiotech.com

Sales:

sales@everestbiotech.com

Tech support:

support@everestbiotech.com

Tel: +44 (0)1869 238326

Fax: +44 (0)1869 238327

US Office

Everest Biotech c/o Abcore

405 Maple Street, Suite A106
Ramona,
CA 92065
USA

Inquiries:

info@everestbiotech.com

Sales:

usasales@everestbiotech.com

Tech support:

support@everestbiotech.com

Tel: 888-320-4628 (toll-free)

Fax: 888-841-9041

www.everestbiotech.com

**Research Use Only. Not for
diagnostic or therapeutic use.**

EB10706 - Goat Anti-CRTC2 / TORC2 (aa 83-96) Antibody

Size: 100µg specific antibody in 200µl



Target Protein

Principal Names: CRTC2, CREB regulated transcription coactivator 2, RP11-422P24.6, TORC2, CREB-regulated transcription coactivator 2, OTTHUMP00000035255, TORC-2, transducer of CREB protein 2, transducer of regulated cAMP response element-binding protein (CREB) 2

Official Symbol: CRTC2

Accession Number(s): NP_859066.1

Human GeneID(s): [200186](#)

Non-Human GeneID(s): 74343 (mouse), 310615 (rat)

Immunogen

Peptide with sequence C-EFQSPLHSPLDSSR, from the internal region of the protein sequence according to NP_859066.1.

Please note the [peptide](#) is available for sale.

Purification and Storage

Purified from goat serum by ammonium sulphate precipitation followed by antigen affinity chromatography using the immunizing peptide.

Supplied at 0.5 mg/ml in Tris saline, 0.02% sodium azide, pH7.3 with 0.5% bovine serum albumin.

Aliquot and store at -20°C. Minimize freezing and thawing.

Applications Tested

Peptide ELISA: antibody detection limit dilution 1:32000.

Western blot: Approx 85kDa band observed in lysates of cell line Jurkat (calculated MW of 73.3kDa according to NP_859066.1). Recommended concentration: 0.3-1µg/ml.

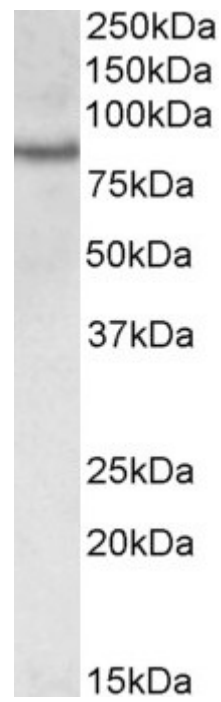
Primary incubation was 1 hour.

IHC: Paraffin embedded Human Thymus. Recommended concentration: 3.75µg/ml.

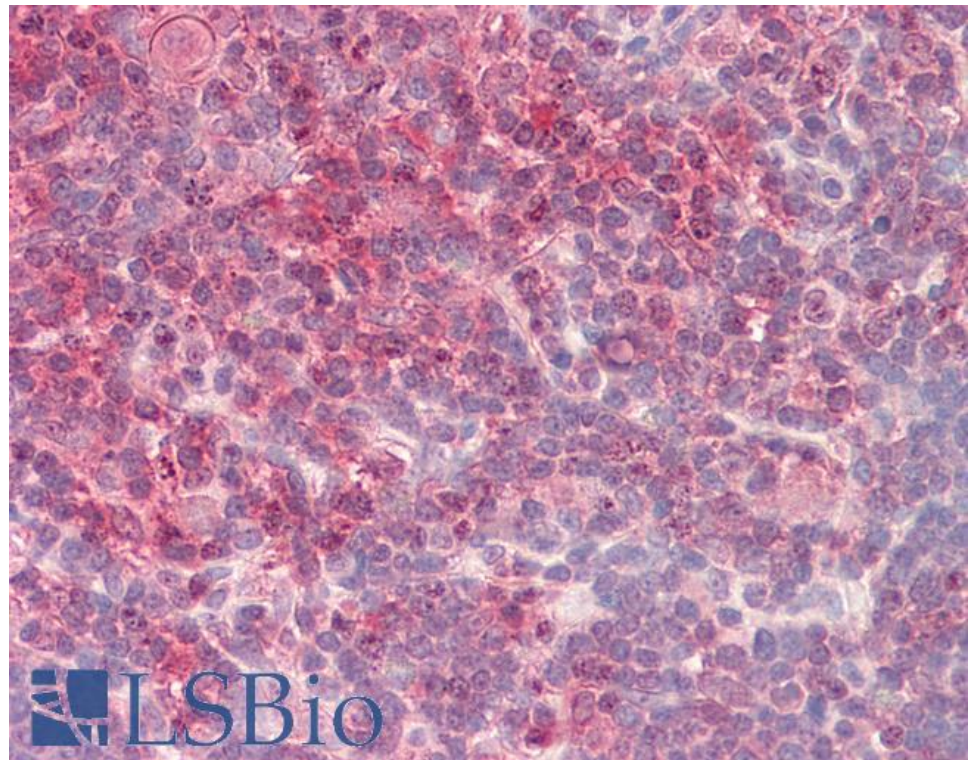
Species Reactivity

Tested: Human

Expected from sequence similarity: Human, Mouse, Rat, Dog, Pig, Cow



EB10706 (0.3µg/ml) staining of Jurkat lysate (35µg protein in RIPA buffer). Detected by chemiluminescence.



EB10706 (3.75µg/ml) staining of paraffin embedded Human Thymus. Steamed antigen retrieval with citrate buffer Ph 6, AP-staining.