



## UK Office

### Everest Biotech Ltd

Cherwell Innovation Centre  
77 Heyford Park  
Upper Heyford  
Oxfordshire  
OX25 5HD  
UK

Enquiries:

[info@everestbiotech.com](mailto:info@everestbiotech.com)

Sales:

[sales@everestbiotech.com](mailto:sales@everestbiotech.com)

Tech support:

[support@everestbiotech.com](mailto:support@everestbiotech.com)

Tel: +44 (0)1869 238326

[www.everestbiotech.com](http://www.everestbiotech.com)

**Research Use Only. Not for  
diagnostic or therapeutic use.**

## EB10258 - Goat Anti-CSF1R (aa734-744) Antibody

Size: 100µg specific antibody in 200µl



### Target Protein

**Principal Names:** CD115, CD115 antigen, C-FMS, colony stimulating factor 1 receptor, CSFR, FIM2, FMS, FMS proto-oncogene, macrophage colony stimulating factor I receptor, McDonough feline sarcoma viral (v-fms) oncogene homolog, CSF1R

**Official Symbol:** CSF1R

**Accession Number(s):** NP\_005202.2; NP\_001275634.1; NP\_001362250.1

**Human GeneID(s):** [1436](#)

**Non-Human GeneID(s):** 307403 (rat)

### Immunogen

Peptide with sequence C-NDSFSEQDLK, from the internal region of the protein sequence according to NP\_005202.2; NP\_001275634.1; NP\_001362250.1.

Please note the [peptide](#) is available for sale.

### Purification and Storage

Purified from goat serum by ammonium sulphate precipitation followed by antigen affinity chromatography using the immunizing peptide.

Supplied at 0.5 mg/ml in Tris saline, 0.02% sodium azide, pH7.3 with 0.5% bovine serum albumin.

Aliquot and store at -20°C. Minimize freezing and thawing.

### Applications Tested

**Peptide ELISA:** antibody detection limit dilution 1:8000.

**Western blot:** Approx. 100kDa band observed in lysates of cell line THP-1 (calculated MW. of 108kDa according to NP\_005202.2). Recommended concentration: 1.5-3µg/ml. Primary incubation 1 hour at room temperature.

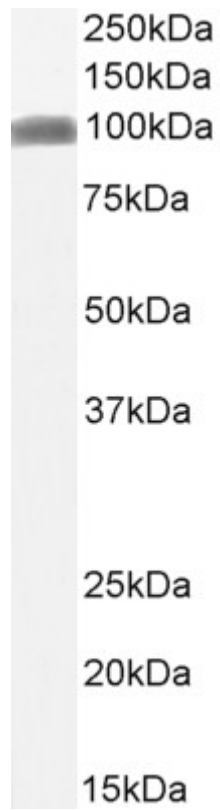
**IHC:** Paraffin embedded Human Spleen and Tonsil. Recommended concentration: 5-6µg/ml.

**Flow Cytometry:** Flow cytometric analysis of THP-1 cells. Recommended concentration: 10ug/ml.

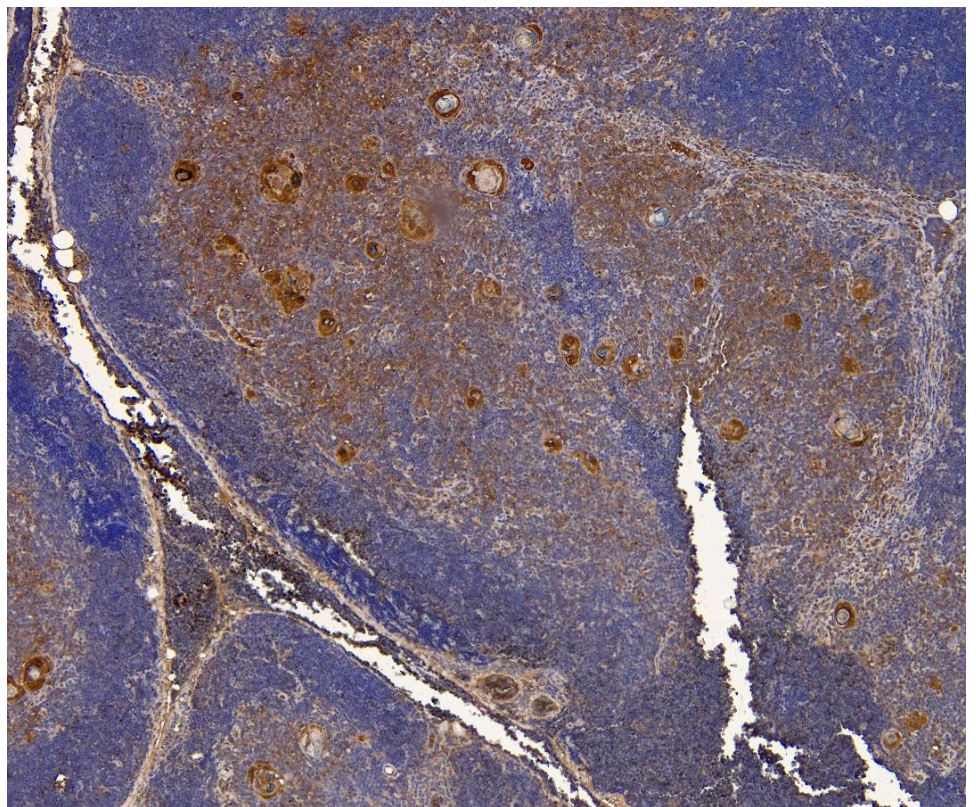
### Species Reactivity

**Tested:** Human

**Expected from sequence similarity:** Human, Dog, Cow

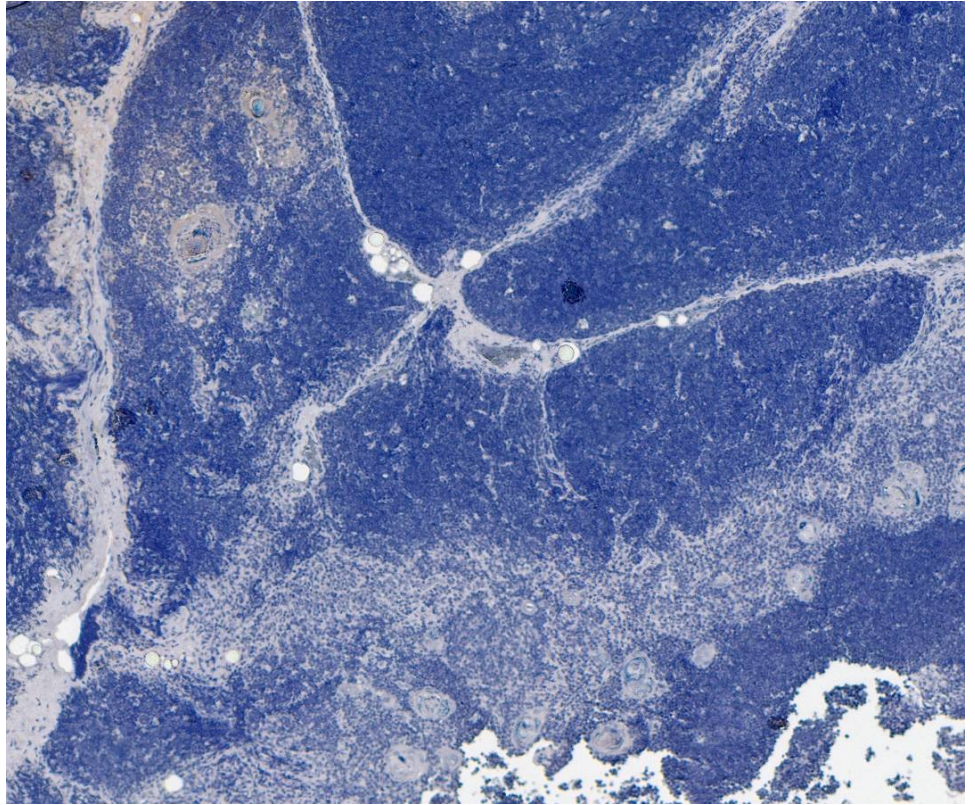


EB10258 (3 $\mu$ g/ml) staining of THP-1 cell lysate (35 $\mu$ g protein in RIPA buffer). Detected by chemiluminescence.

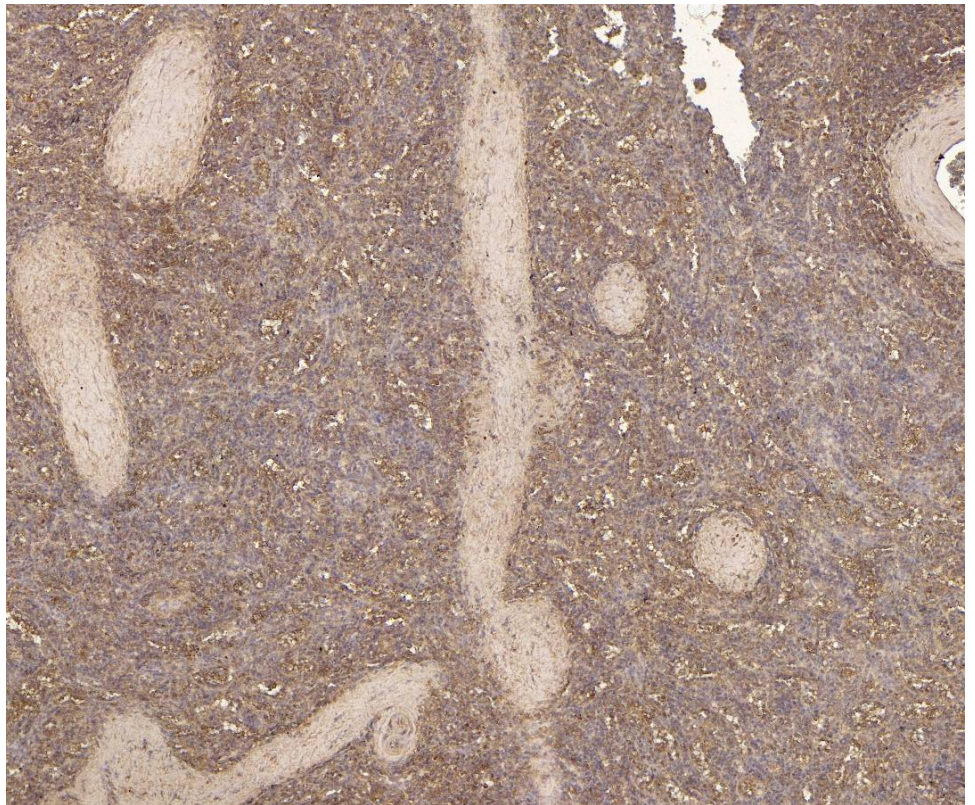


EB10258 (6 $\mu$ g/ml) staining of paraffin embedded Human Tonsil. Heat induced antigen retrieval with citrate buffer pH 6, HRP-staining.



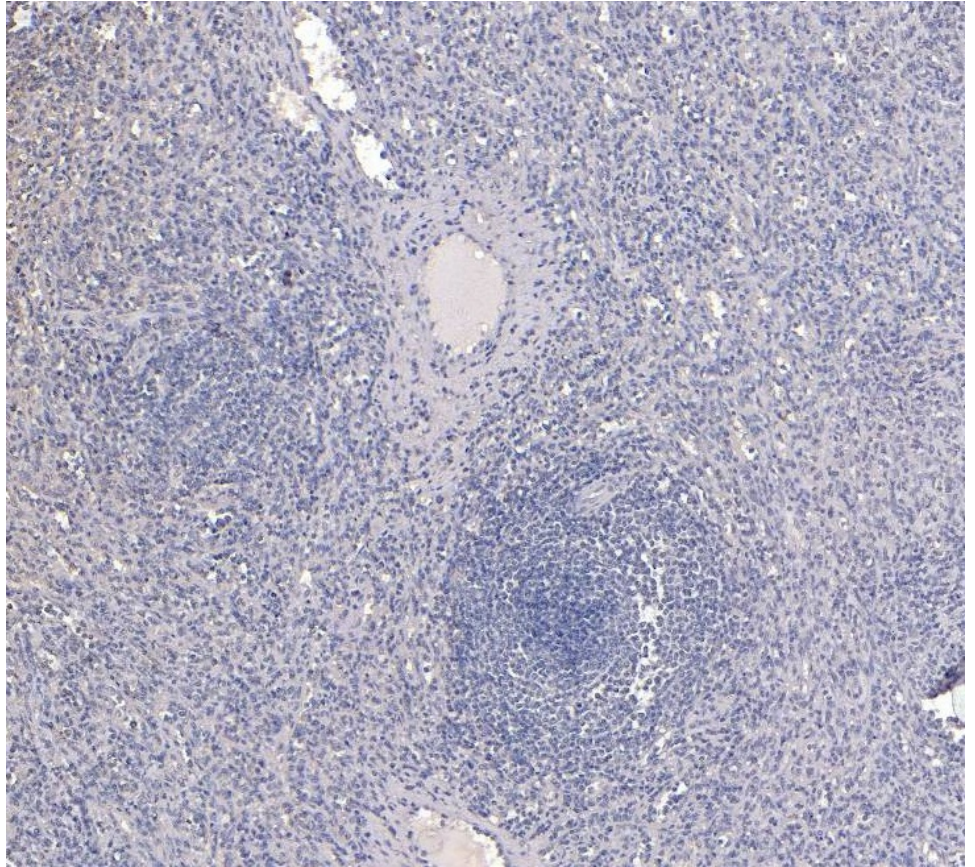


EB10258 Negative Control showing staining of paraffin embedded Human Tonsil, with no primary antibody.

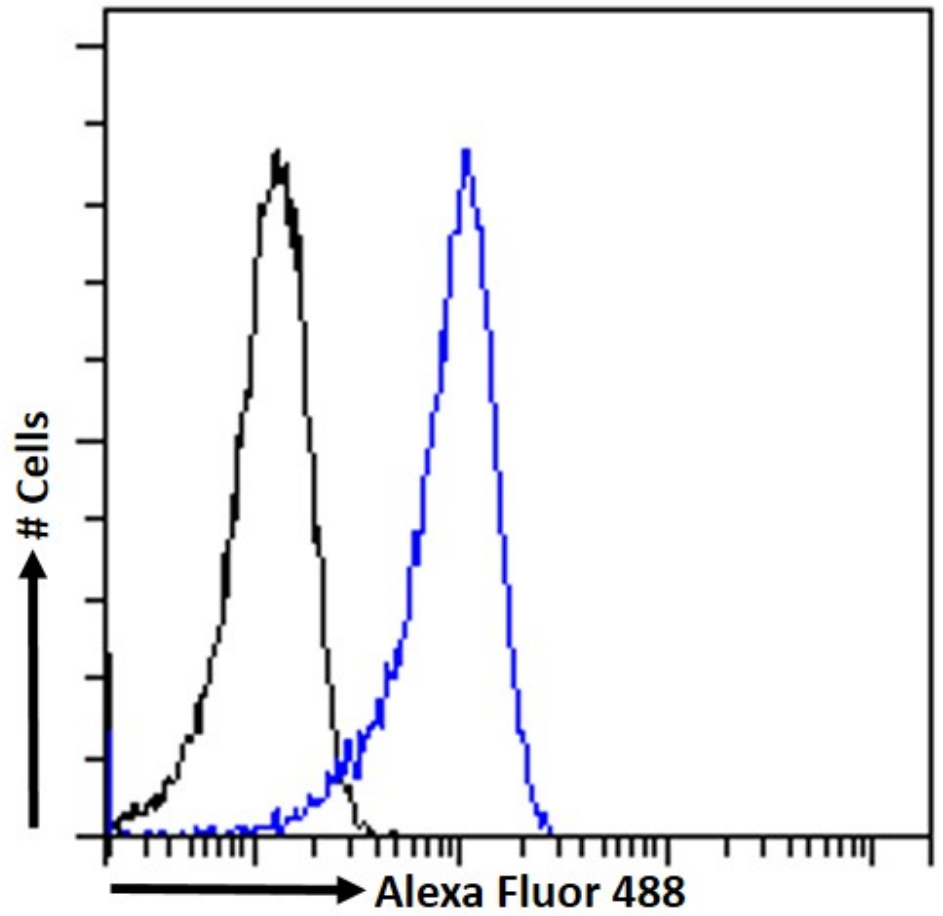


EB10258 (5 $\mu$ g/ml) staining of paraffin embedded Human Spleen. Heat induced antigen retrieval with citrate buffer pH 6, HRP-staining.





EB10258 Negative Control showing staining of paraffin embedded Human Spleen, with no primary antibody.



EB10258 Flow cytometric analysis of paraformaldehyde fixed THP-1 cells (blue line) permeabilized with 0.5% Triton. Primary incubation 1hr (10ug/ml) followed by Alexa Fluor 488® conjugated secondary antibody (1ug/ml). IgG control: Unimmunized goat IgG (black line) followed by Alexa Fluor 488 secondary antibody.