



International Office

Everest Biotech Ltd

Vector Laboratories, Inc.
6737 Mowry Ave
Newark, CA 94560
United States

Customer Service:

customerservice@vectorlabs.com

Technical Service:

technical@vectorlabs.com

Tel: +1 (800) 227-6666

www.everestbiotech.com

**Research Use Only. Not for
diagnostic or therapeutic use.**

EB09777 - Goat Anti-CSMD1 Antibody

Size: 100µg specific antibody in 200µl



Target Protein

Principal Names: CUB and Sushi multiple domains 1, KIAA1890, CSMD1

Official Symbol: CSMD1

Accession Number(s): NP_150094.4

Human GeneID(s): [64478](#)

Non-Human GeneID(s): 94109 (mouse), 364634 (rat)

Immunogen

Peptide with sequence C-KGVREVNETHVTKTP, from the internal region of the protein sequence according to NP_150094.4.

Please note the [peptide](#) is available for sale.

Purification and Storage

Purified from goat serum by ammonium sulphate precipitation followed by antigen affinity chromatography using the immunizing peptide.

Supplied at 0.5 mg/ml in Tris saline, 0.02% sodium azide, pH7.3 with 0.5% bovine serum albumin.

Aliquot and store at -20°C. Minimize freezing and thawing.

Applications Tested

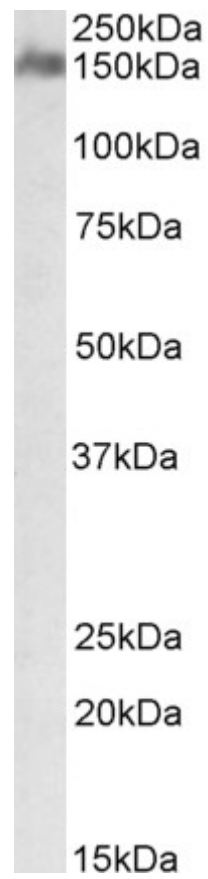
Peptide ELISA: antibody detection limit dilution 1:128000.

Western blot: Approx 150kDa band observed in Human Brain (Cerebellum) lysates (calculated MW of 389kDa according to NP_150094.4). The observed molecular weight corresponds to earlier findings in literature with different antibodies (Kraus et al, J Immunol. 2006 Apr 1;176(7):4419-30. PMID: 16547280). Recommended concentration: 1-3µg/ml.

Species Reactivity

Tested: Human

Expected from sequence similarity: Human, Mouse, Rat, Cow



EB09777 (1µg/ml) staining of Human Cerebellum lysate (35µg protein in RIPA buffer). Primary incubation was 1 hour. Detected by chemiluminescence.