

UK Office

Everest Biotech Ltd

Cherwell Innovation Centre
77 Heyford Park
Upper Heyford
Oxfordshire
OX25 5HD
UK

Enquiries:

info@everestbiotech.com

Sales:

sales@everestbiotech.com

Tech support:

support@everestbiotech.com

Tel: +44 (0)1869 238326

www.everestbiotech.com

**Research Use Only. Not for
diagnostic or therapeutic use.**

EB05953 - Goat Anti-CSN2 / TRIP15 Antibody

Size: 100µg specific antibody in 200µl



Target Protein

Principal Names: COPS2, TRIP15, COPS2, CSN2, thyroid receptor interacting protein 15, SGN2, COP9 constitutive photomorphogenic homolog subunit 2, thyroid receptor interacting protein 15, COP9 constitutive photomorphogenic homolog subunit 2 (Arabidopsis), COP9, subunit 2, ALIEN, COP9 signalosome complex subunit 2, JAB1-containing signalosome subunit 2

Official Symbol: COPS2

Accession Number(s): NP_004227.1; NP_001137359.1

Human GeneID(s): [9318](#)

Non-Human GeneID(s): 12848 (mouse), 261736 (rat)

Immunogen

Peptide with sequence C-LNSLNQAVVSKLA, from the C Terminus of the protein sequence according to NP_004227.1; NP_001137359.1.

Please note the [peptide](#) is available for sale.

Purification and Storage

Purified from goat serum by ammonium sulphate precipitation followed by antigen affinity chromatography using the immunizing peptide.

Supplied at 0.5 mg/ml in Tris saline, 0.02% sodium azide, pH7.3 with 0.5% bovine serum albumin.

Aliquot and store at -20°C. Minimize freezing and thawing.

Applications Tested

Peptide ELISA: antibody detection limit dilution 1:16000.

Western blot: Approx. 48kDa band observed in lysates of Mouse pituitary cell line NIH3T3 (calculated MW of 51.6kDa according to NP_004227.1). Recommended concentration: 1-3µg/ml.

IHC: In paraffin embedded Human Thyroid Gland shows nuclear and cytoplasm staining in activated epithelial cells Recommended concentration: 3-5µg/ml.

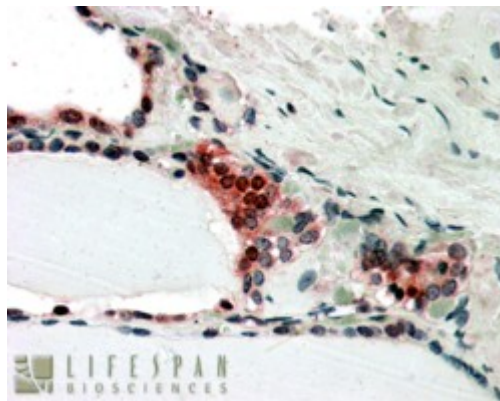
Species Reactivity

Tested: Human, Mouse

Expected from sequence similarity: Human, Mouse, Rat, Dog, Cow



EB05953 staining (0.03 μ g/ml) of NIH3T3 lysates (RIPA buffer, 30 μ g total protein per lane). Primary incubated for 1 hour. Detected by chemiluminescence.



In paraffin embedded Human Thyroid Gland shows nuclear and cytoplasm staining in activated epithelial cells
Recommended concentration, 3-5 μ g/ml.